

GAS Leak

Genuinely Approachable Sudoku
from the CtC Discord

Volume 31:

August 1 – August 31, 2023

Welcome to August!

This month was a month long event: everyone could guess the type used for next days puzzle – and if you guessed right, you earned bonus cowboy hats 🤠

If you want you can still participate by not reading ahead and guessing the next sudoku type. If you're right you may grant yourself a hat for this day.

A small hint: we also had a swap of the setters from the GAPP team. On which days? That's for you to find out 😊. In case you don't know GAPP: these are Genuinely Approachable Pencil Puzzles from the the same Discord server the GAS puzzles are from (in channel #daily-pencil-puzzles). Go check them out - some even have digits 🤔🤔. Oh, and don't worry: they did set sudoku for us GAS solvers 😊.

Due to the event there are quite a few days where the puzzle had to be set on a different page. I beg your pardon for this inconvenience.

Have fun solving!

Engy

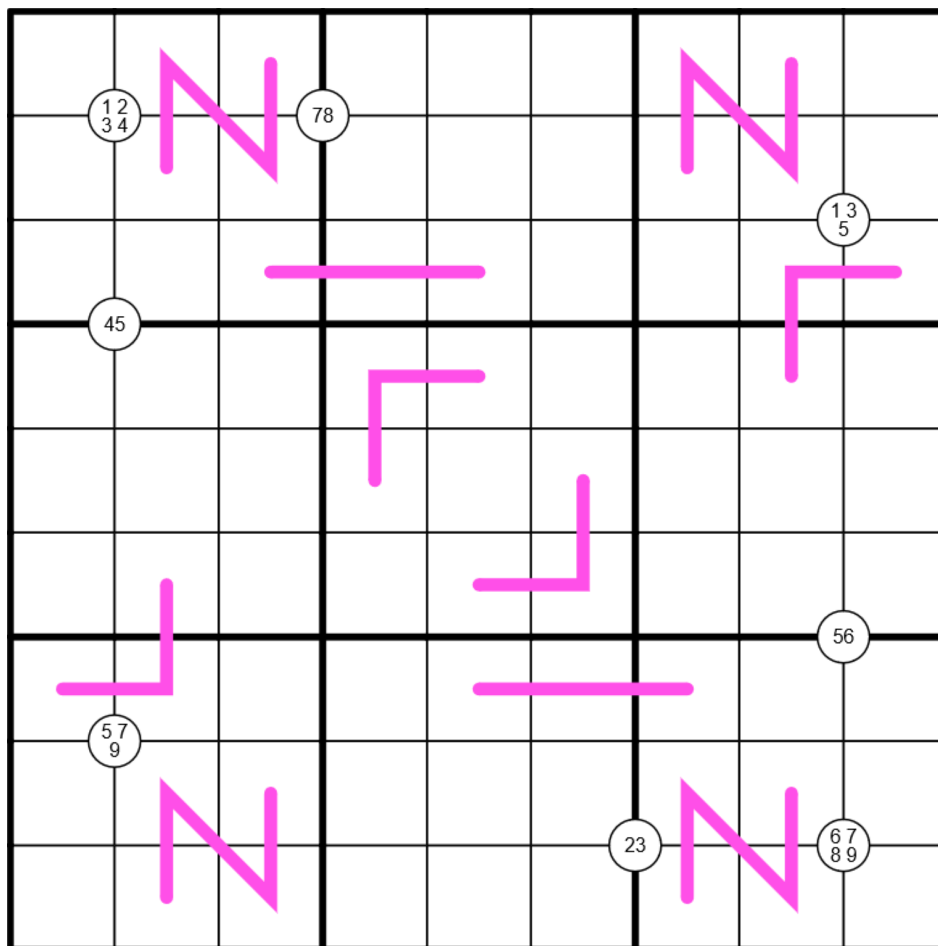
August 1, 2023: Comeback Kid
Bill Murphy

Welcome Sports Fans to **[REDACTED]** August, the guessing game where you, the solver try and guess what the next day's GAS will be. Nobody correctly guessed (**gassed?**) today's GAS, but we're awarding bonus hats to those of you who got one of two constraints so congratulations and 16 bonus hats go to @Nitro @Widowerofdoom @Jade @ConManAU @boaz4 @□ @MrScaryMuffin 52👨‍🎨491👨‍🎨249👨‍🎨81🐲 @StefanW @atroposhears @Rob Miller @Daederion @Albany @Dr Logic @keyofw @samm82 @AriFleisch

The only hint you're getting from me today is tomorrow's Phil puzzle is only one variant. (Please remember to keep speculation in spoilers)

Today's GAS is a **Renban Quadruples** Sudoku!

Normal sudoku rules apply. Cells along a purple line contain a set of consecutive, non-repeating digits in any order. Digits in clues at cell intersections must appear in the surrounding 4 cells.



f-puzzles: <https://f-puzzles.com/?id=26cn8fy9>

CTC: <https://tinyurl.com/bed8j34b>

August 2, 2023: Second Guessing

Philip Newman

It's the second day of **[REDACTED] August**, the guessing game where ~~we toy with you for our entertainment~~ you try to guess what tomorrow's GAS will be! Congrats to @TheedMan, @Dr Logic, @dangernoodle, @MrScaryMuffin 52 🤖 491 🍷 249 🤖 81 🦎, @Aesewesen 🐷, @deloh, @Evitaitini 91 🦎 88 🍷 4?, @sudactylkuro 🐷, @KikiFeline (4 🤖 25 🦎 24 🐦 11 🤖 55 🦎), and @Yoshi Baroshi who correctly guessed today's Killer Sudoku, despite my attempt to throw everyone off by posting one to end July. Grab yourselves a 🤖! (Along with anyone I missed, apologies if I did!)

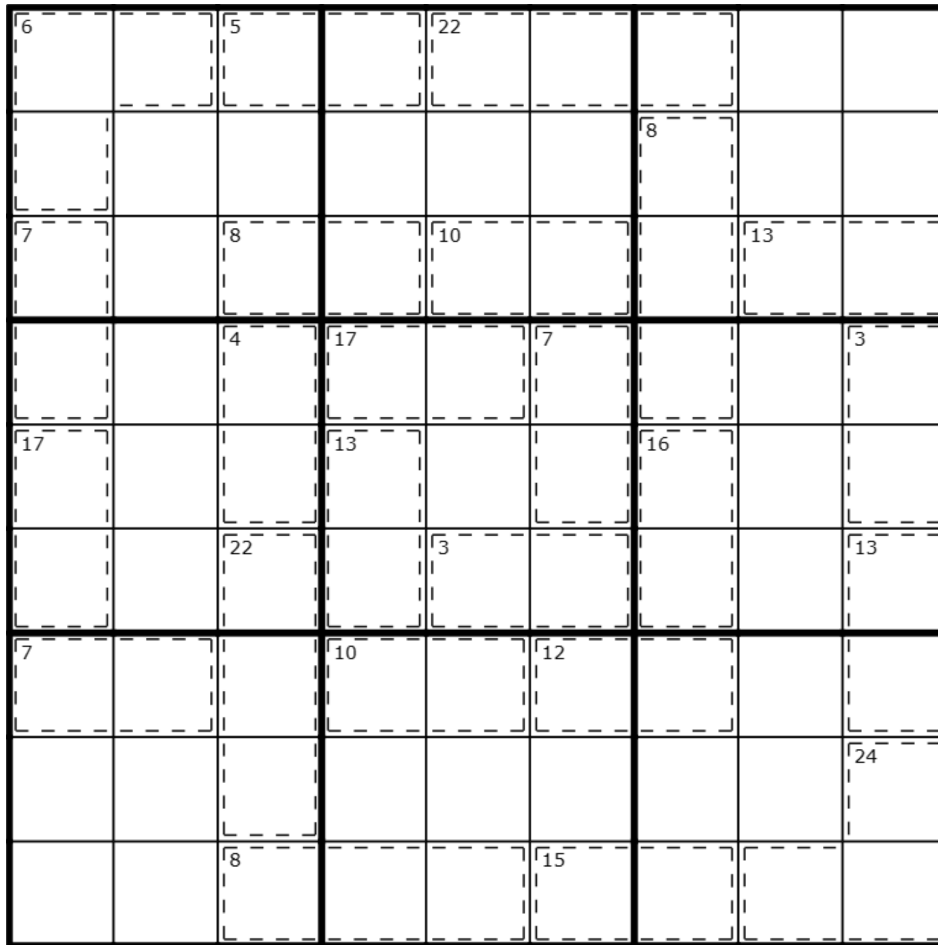
Tomorrow's puzzle is another with two variants, I'll let @clover! decide if you need to guess both or just one.

Normal sudoku rules apply.

Killer: Digits in cages cannot repeat and must sum to the total given.

(The paper which named [today's dino] was published only 13 days ago! I like to think there is some GAS solving paleontologist out there trying to give me more sauropod species names before I run out.)

↓↓ ↓↓ (The puzzle is on the next page) ↓↓ ↓↓



Play on f-puzzles: <https://f-puzzles.com/?id=2y3wt4mf>

Play on CTC App: <https://tinyurl.com/5e733x6d>

August 3, 2023: XV / Kropki Pairs
clover!

Peanut butter and jelly. Tom and Jerry. Sonny and Cher. **XV and Kropki**. Yes, we're celebrating iconic duos today, and the following solvers were picking up what we were putting down! Enjoy your bonus hat (you had to get it 100% correct this time!)

@figus 🎩219|👹227|🦎34|👨1 @📱 @Widowerofdoom @bean [173🎩|144👹|2🦎|3👨] @Albany @Jordyn @MrScaryMuffin 52👨491🎩249👹81🦎 @Rob Miller @SMmarcus100 (287🎩344👹51🦎17👨) @Tublu the Honest @Jelain @PulverizingPancake @Nitro @goldilocks @keyofw @Aesewesen 🐷 @dangernoodle @EvenEagle @atroposhears, Mrtn, Shogia, meadowphoenix, merqyuri, Eve the Eevee

Normal sudoku rules apply. Also,

Digits separated by an X sum to 10

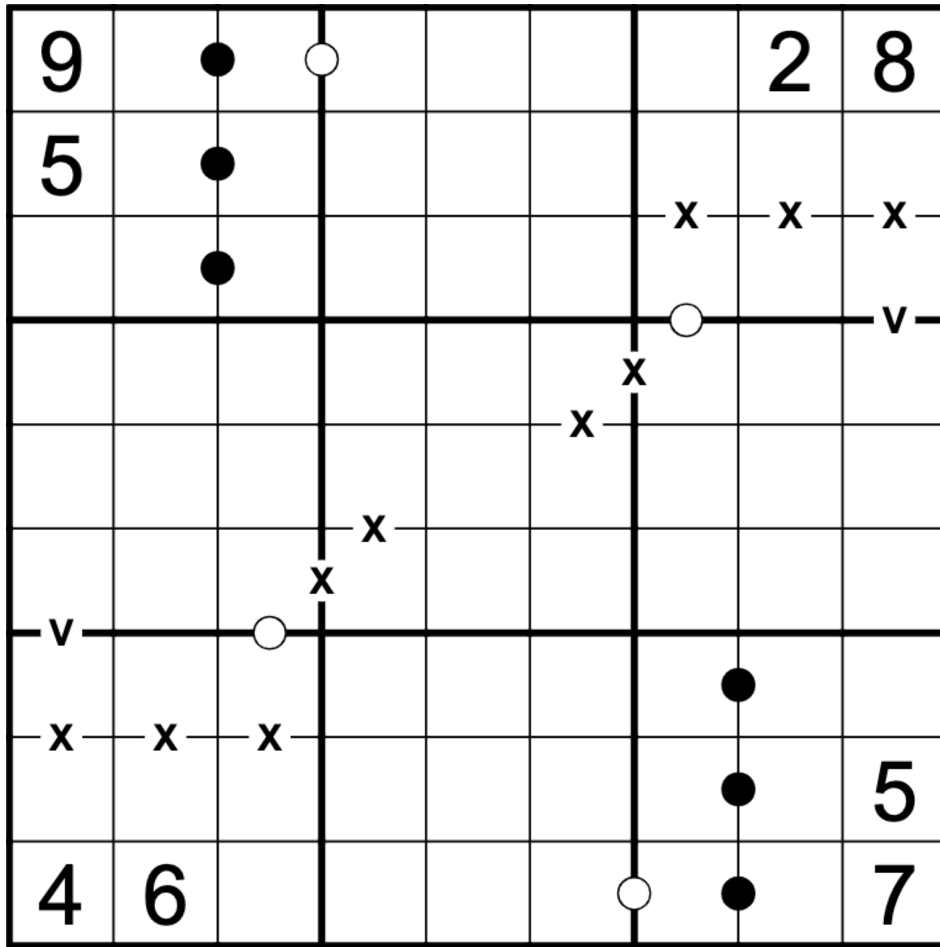
Digits separated by a V sum to 5

Digits separated by a white dot are consecutive

Digits separated by a black dot are in a 1:2 ratio, such as 3 and 6

Not all possible symbols are necessarily given.

↓↓ ↓↓ (The puzzle is on the next page) ↓↓ ↓↓



f-puzzles: <https://f-puzzles.com/?id=25uclh5g>

CtC: <https://tinyurl.com/5b4wmakb>

August 4, 2023: Remember Me

Bill Murphy

Welcome back to Who's Sudoku is it anyway, where the times are made up and the party hats don't really matter!

37 correct-ish guesses yesterday and I've got places to go and things to do, so I'm going to only shout out a couple of people in particular, the ones who seem to be oddly specific in their guesses of **Double Digit Arrows** for today: @Mrtn @JayTheBusinessGoose @Serpiton @Aesewesen 🐘 @MrScaryMuffin 52 🧐 491 🎩 249 🐱 81 🐸 and @Jordyn (who didn't exactly guess what today's was, but did prove pretty confidently they know what's up)

What do they know that you don't? Stick around and find out.

Normal sudoku rules apply. Digits along an arrow must sum to that arrow's bulb, reading from left to right.

GAS 101: If you haven't seen it before, the total in the row 1 and 9 arrows is [see Hints Page at or near the end of this Leak]

(Mark, you gotta figure out I pick the hardest to pronounce dinosaurs by now, right?)

↓↓ ↓↓ (The puzzle is on the next page) ↓↓ ↓↓

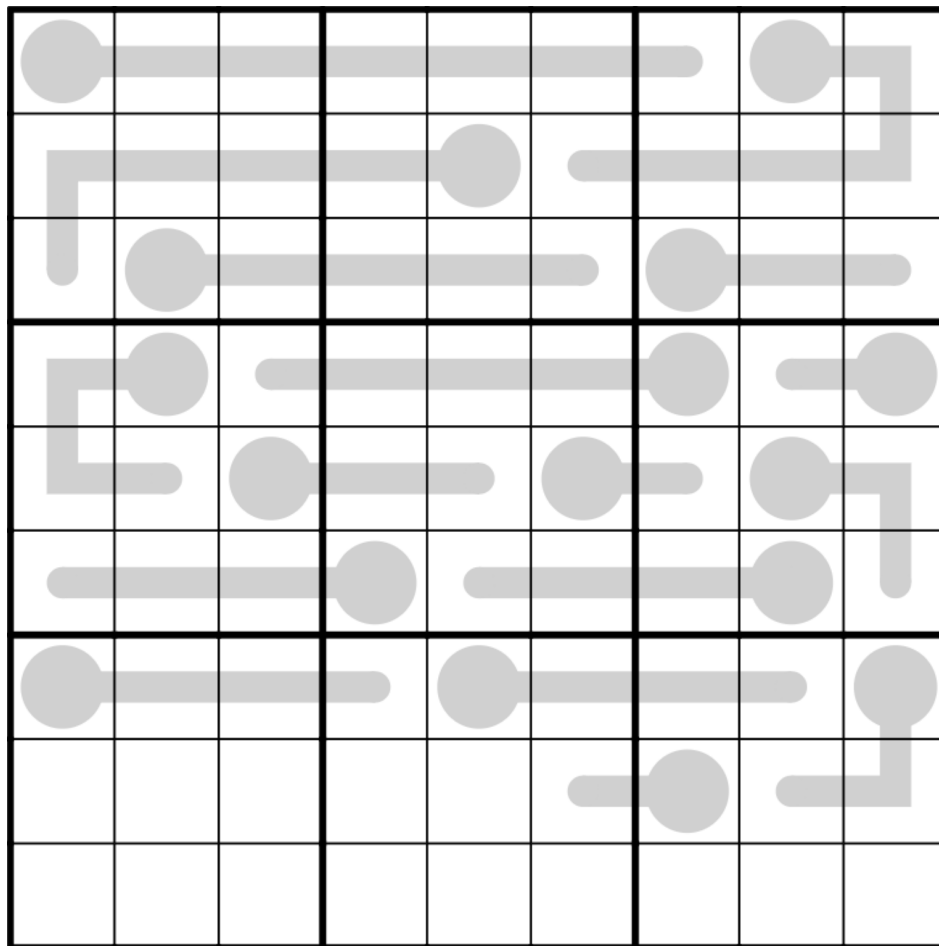
August 5, 2023: Boustrophedon
Philip Newman

Congrats if you correctly guessed that today's GAS would be a **Thermo Sudoku!** We're over 40 correct guesses now so I'm not doing individual shout-outs, claim your 🏆 if you got it!

Normal sudoku rules apply.

Thermo: Digits along thermometers must strictly increase from bulb to tip.

This one is definitely on the longer side!

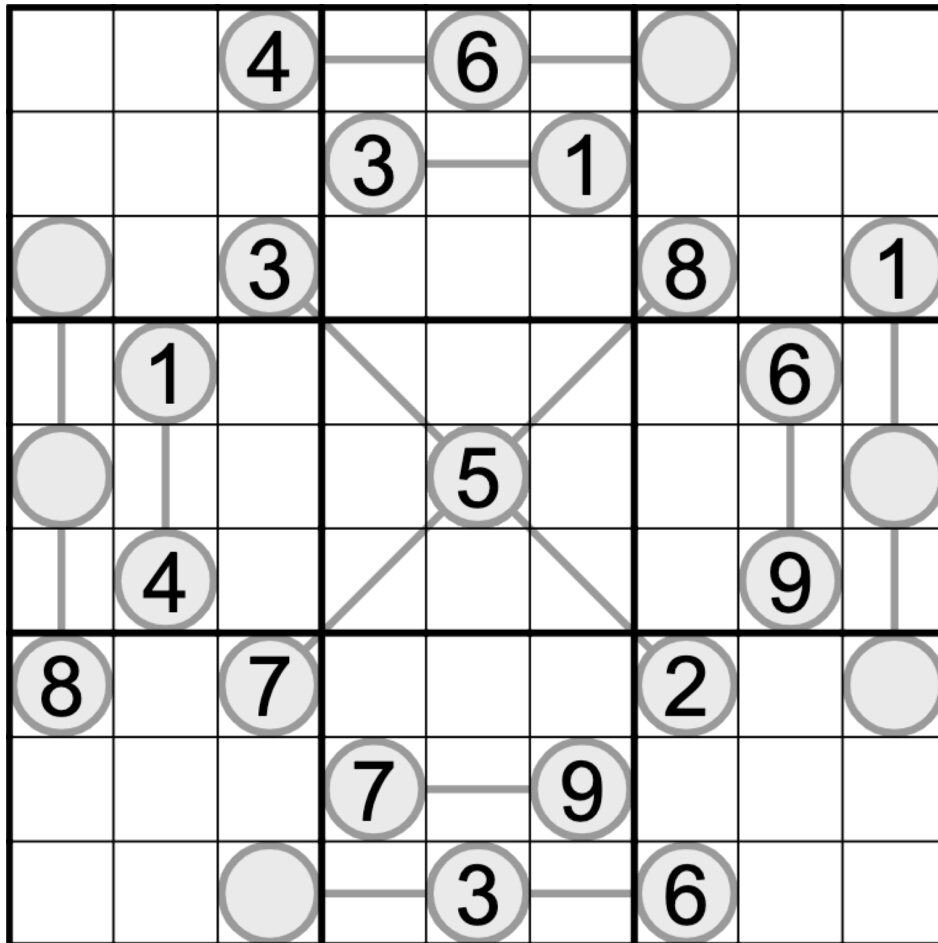


Play on f-puzzles: <https://f-puzzles.com/?id=23dy78f>
Play on CTC App: <https://tinyurl.com/mr26dd3h>

August 6, 2023: Between Lines
 clover!

Congratulations to @Fawful @jandysson96 @merqyuri (👑x78, 🧡x319, 🐸x81)
 @PulverizingPancake @Oripy @zer0keeie @Jordyn @Rob Miller @Amy Steele
 @Neverstxp (30🧡234👑135🧡20🐸) @sudactylkuro 🐻 @meadowphoenix
 @MrScaryMuffin 52🧡491👑249🧡81🐸 @SMmarcus100 (287👑344🧡51🐸17🧡)
 @sararielle 🐸A4🧡175👑11C🐦F🐸4B🐻22 @Tublu the Honest @atroposhears
 @Shogia-411 🐻177🐸5🐦1416🧡👑4🐸 @Albany @Jelain @EvenEagle @Asia
 (421👑48🧡3🐸11🧡1🔥) @Paty @dangernoodle @n107yuh @ninefoxtails
 @fiboway @MrDon @Aesewesen 🐻 @cipher8669 @PsyMar @Mrtn @goldilocks and
 @Mornicus for reading *between the lines* and predicting today's **between lines GAS**. I
 like your names, your brains, and your competitive spirit. 😊

Normal sudoku rules apply. Digits on lines must be between the digits in the attached circles. For instance, if the circles attached to a line contain "4" and "8", the digit on the line can be 5, 6, or 7.



f-puzzles: <https://f-puzzles.com/?id=2dnyr7zh>
 CtC: <https://tinyurl.com/wjhemrba>

August 7, 2023: Forget to Remember

Bill Murphy

Over the weekend, I got a World Record! This is 100% serious. The video game "Salamander County Public Television" which is made a collection of minigames made from stock images and music, I am the best at the world at a particular level called "that's beans."

The context of this level is that two words appear on the screen and you have a clock that gets shorter as the game goes on and you must select the word that is "beans" and not select the word that is not "beans". That's really all there is to it.

Which means as the world leader in deciding if something is "beans" or not, I can tell you that today's **GAS** is not "beans" as correctly surmised by @fiboway @Mornicus @Chaotic Solving @Jelain @Fawful @JayTheBusinessGoose @Tublu the Honest @jandysson96 @Mrtn @cait170301 @Emphyrio @DreamLibrarian @Oripy @sudactylkuro 🐷 @SSGranor [10k pack in archive] @Neverstxp (30👤234👤135👤20👤) @zer0keefie @dangernoodle @Jordyn @Shogia-411👤177👤5👤1416👤4👤 @Shogia-411👤177👤5👤1416👤4👤 @meadowphoenix @SMmarcus100 (287👤344👤51👤17👤) @Serpiton @EvenEagle @MrScaryMuffin 52👤491👤249👤81👤 @atroposhears @notabadger @I_Love_Legos @Paty @Rob Miller @AriFleisch @Aesewesen 🐷 @Albany @Ducks_Eat_Bread @MikoKisai @hampter @ninefoxtails @MrDon @merqyuri (👤x78,👤x319,👤x81) @goldilocks + 2 more is Mark's **all-time favourite** of **Fortress Sudoku!**

Normal sudoku rules apply. Digits in grey cells must be larger than cells in orthogonally adjacent white cells.

↓↓ ↓↓ (The puzzle is on the next page) ↓↓ ↓↓

	3					⋈		
1		6		4	⋈			
⋈	8		3	⋈				
	⋈	7	⋈	3	⋈			
2		⋈	4		1	⋈		5
			⋈	2	⋈	6	⋈	
				⋈	5		8	⋈
			⋈	6		4		2
		⋈					6	

f-puzzles: <https://f-puzzles.com/?id=2827o77j>

CTC: <https://tinyurl.com/kvext6y9>

August 8, 2023: Neosauropod Radiation

Philip Newman

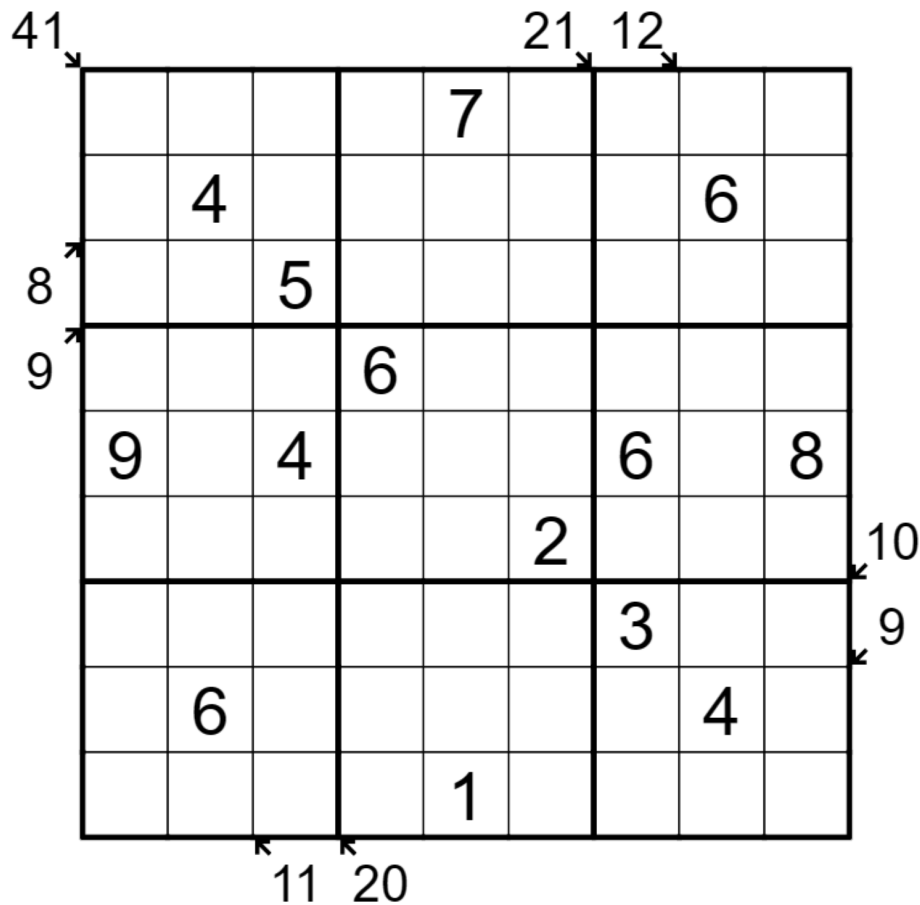
Discord is running low on mention toner, so I'm only shouting out those who correctly guessed today's variant who didn't get a mention yesterday. Congrats to @anyeyeball, @zachb20, @cipher8669, @sararielle 🦎A4 🧡175 🎩11C 🐦F 🦀4B 🐼22, @pey [1 🧡, 136 🎩, 127 🧡, 20 🐼, 36 🦀], @n107yuh, @PulverizingPancake, @KikiFeline (4 🐼25 🦀24 🐦11 🧡55 🦎), @Sarah Clark (+37 more if I counted right)!

Today's **GAS** is a **Little Killer Sudoku!** (In typical Philip style the classic might be a wee bit trickier than the variant... Not that much trickier though!)

Normal sudoku rules apply.

Little Killer: Digits along the indicated diagonals must sum to the total given (digits may repeat if allowed by other rules).

([Today's dinosaur] is even newer than the Igai from earlier in the month; "Fossils of the oldest diplodocoid dinosaur suggest India was a major centre for neosauropod radiation" was published four days ago!)



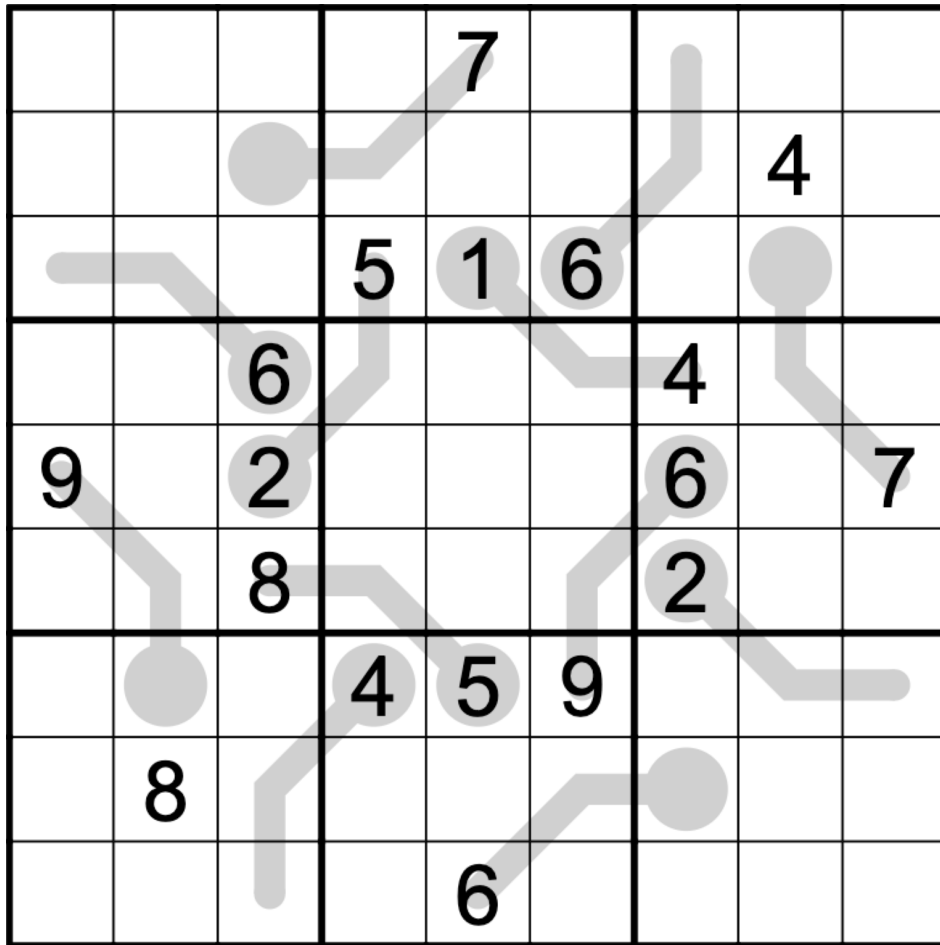
Play on f-puzzles: <https://f-puzzles.com/?id=24h992na>

Play on CTC App: <https://tinyurl.com/mrx36a3m>

**August 9, 2023: Thermo
clover!**

I'm having some connection issues today and can't use Discord search, so this is a great opportunity to fool me into thinking you guessed correctly. Of course you'd never take advantage... *checks bonus hat cabinet warily* ... right?

In today's **thermo sudoku**, normal sudoku rules apply. Also, digits along thermometers must increase, starting from the round bulb.



f-puzzles: <https://f-puzzles.com/?id=26keao08>
 CtC: <https://tinyurl.com/yfbc6z6b>

August 10, 2023: Momentary Bliss

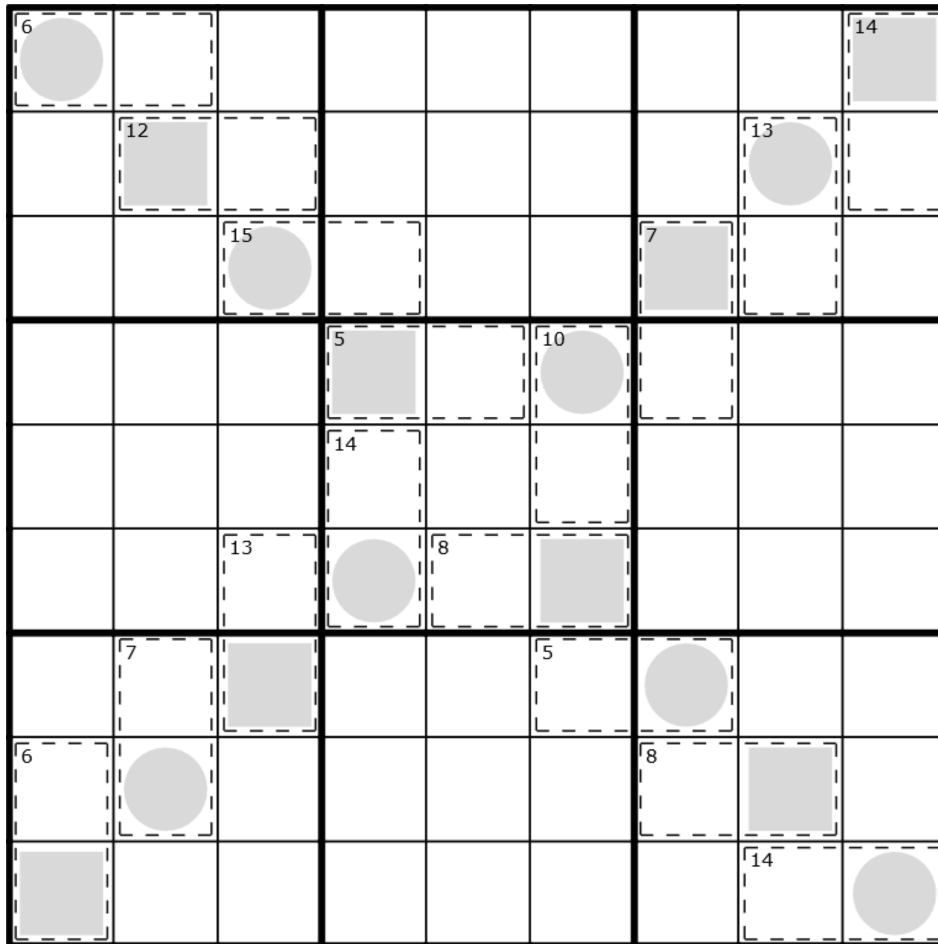
Bill Murphy

You know, every time someone says a GAS is "Not GAS" I go and eat a digit from a future puzzle. Now, you might be saying, "Bill, do you mean delete?" No, I know what I said. Sometimes dinner is stir-fried threes. Lunch is a six-wich. Breakfast is Ones on toast. Snacks for the day are salted-caramel nines. Sometimes I treat myself to a five-cream cone.

Anyway, that's what I eight yesterday. Ba dum tsh.

With 41 correct guesses of today's **Odd/Even Killer Sudoku**, I hope y'all weren't expecting digits. Just shapes that suspiciously look like bitemarks. (If you only said Killer, no bonus hat for you! I'm mean now, I'm in my mean era)

Normal sudoku rules apply. Digits in cages must sum to the small corner total. Cells with grey squares must contain even digits and cells with grey circles must contain odd digits.



f-puzzles: <https://f-puzzles.com/?id=2xz3pnv6>

CTC: <https://tinyurl.com/2wam7vmw>

August 11, 2023: What Next?

Philip Newman

Today's **GAS** is a **Next to Nine Sudoku**, a variant we haven't done in a long time... incredible how so many of you guessed it correctly anyway. 🌚🌚

Normal sudoku rules apply.

Next to Nine: Clues outside the grid give all digits which are adjacent to 9 in the corresponding row or column, in any order.

	3	6 7	7 8	6 7	1 2	3 4	2 3	2	2 3
1 4									1
5 8								2	
3 6							3		
1 4						4			
5 8					5				
3 6				6					
2 5			7						
5		8							
5	9								

Play on f-puzzles: <https://f-puzzles.com/?id=2aelr2jd>

Play on CTC App: <https://tinyurl.com/r6rvkm22>

**August 12, 2023: Diagonal
clover!**

Good morning, @\$50,000 on the Wall @rufnredy @jandysson96 @Jelain @Chaotic Solving @zer0keefie @sudactylkuro 🐘 @MrDon @Jordyn @SSGranor [10k pack in archive] @Aesewesen 🐘 @sararielle 🐉 A4 🧡 175 🎩 11C 🐦 F 🦀 4B 🐼 22 @AriFleisch @PulverizingPancake @DreamLibrarian @podpeas12 @SMmarcus100 (287 🎩 344 🧡 51 🐉 17 🧑) @zachb20 @Neverstxp (30 🧑 234 🎩 135 🧡 20 🐉) @MrScaryMuffin 52 🧑 491 🎩 249 🧡 81 🐉 @meadowphoenix @Tublu the Honest @Paty @n107yuh @Rob Miller @dangernoodle @Amy Steele @merqyuri (🎩 x78, 🧡 x319, 🐉 x81) @anyeyeball @Shogia-411 🐼 177 🦀 5 🐦 1416 🧡 🎩 4 🐉 @Steven @Sarah Clark @I_Love_Legos @Albany @atroposhears @hampter @fiboway @rotiro @goldilocks @MikoKisai @Yoshi Baroshi @ninefoxtails @EvenEagle @Mrtn and @Mornicus, and congratulations on your continued efforts to push the limits of Discord's mention system! You've correctly guessed that today's GAS is a **diagonal sudoku**. Some other folks correctly guessed this too, I'm sure, but referred to it as 'sudoku X' which is correct but weirdly hard for me to search for. Sorry about that. 🙄

Normal sudoku rules apply. Each marked diagonal contains the digits 1-9 exactly once each.

↓↓ ↓↓ (The puzzle is on the next page) ↓↓ ↓↓

					8	5	6	
1								2
	2	3						7
			4					
	7			5			3	
					6			
5						7	8	
8								9
	3	4	2					

f-puzzles: <https://f-puzzles.com/?id=23va33bd>

CtC: <https://tinyurl.com/5xxmya5d>

August 13, 2023: Time After Time
Bill Murphy

Today's GAS comes to you from just outside Melbourne Airport, picking up my partner from her trip to bad Melbourne. Apologies for no tags today, it's impossible to do it on my phone, but I'm going to assume there's a lot of you who correctly surmised that today's GAS is a **Clone Sudoku**. (Who knew a puzzle server would be good at solving puzzles? We didn't)

Occasionally we get requests from people to go through our thinking behind puzzles and I really liked the inception behind this puzzle, so I'll leave it under a spoiler and you can come back and have a look when you check your time.

[Spoiler at or near the end of this Leak]

Normal Sudoku Rules Apply. Grey regions are clones and must contain identical digits in identical positions.

			9					
				8		9		7
					7			6
1						6		
	2			4			5	
		3						4
2			4					
8		4		5				
					6			

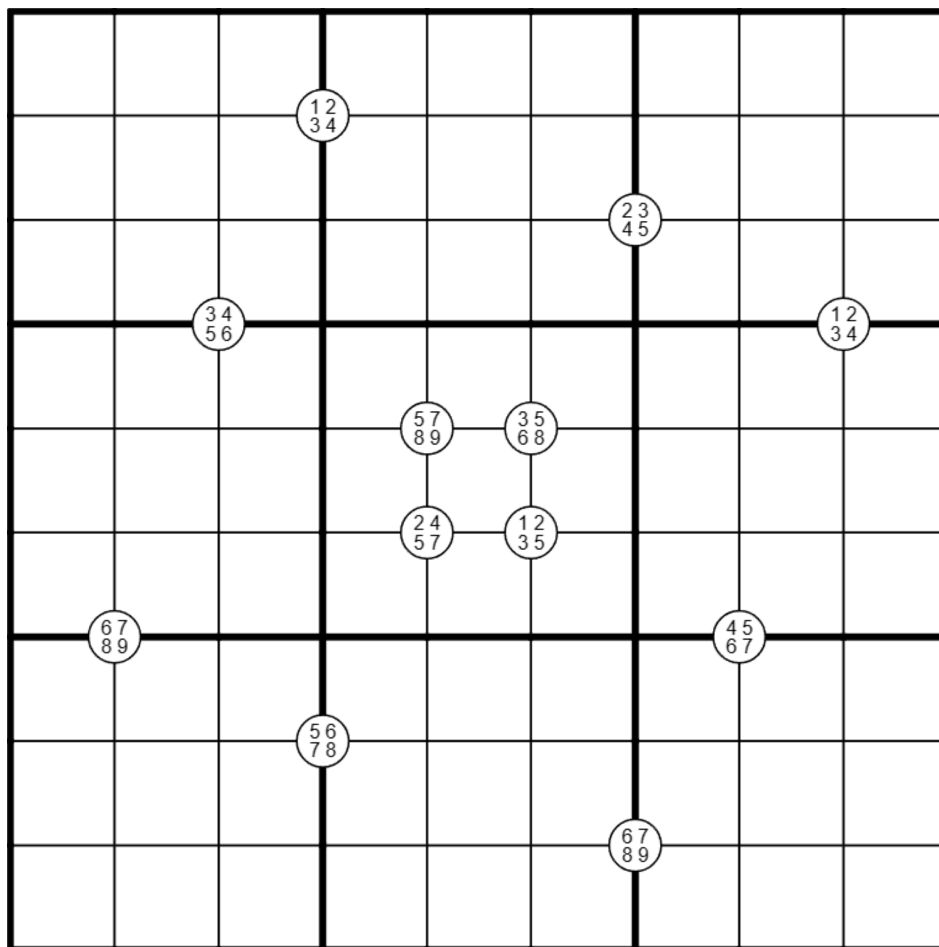
F-puzzles: <https://f-puzzles.com/?id=22j8ygyr>
CTC: <https://tinyurl.com/2rypnsww>

August 14, 2023: Full Circle
Philip Newman

It looks like 35 of you correctly guessed today's **GAS** would be a **Quadruples Sudoku**... unfortunately that's not a multiple of 4 so I'm going to have to charge you all a processing fee for your 🤖.

Normal sudoku rules apply.

Quadruples: Digits in corner circles must appear in the surrounding four cells, in some order.



Play on f-puzzles: <https://f-puzzles.com/?id=2czepkyg>
Play on CTC App: <https://tinyurl.com/24fst2h>

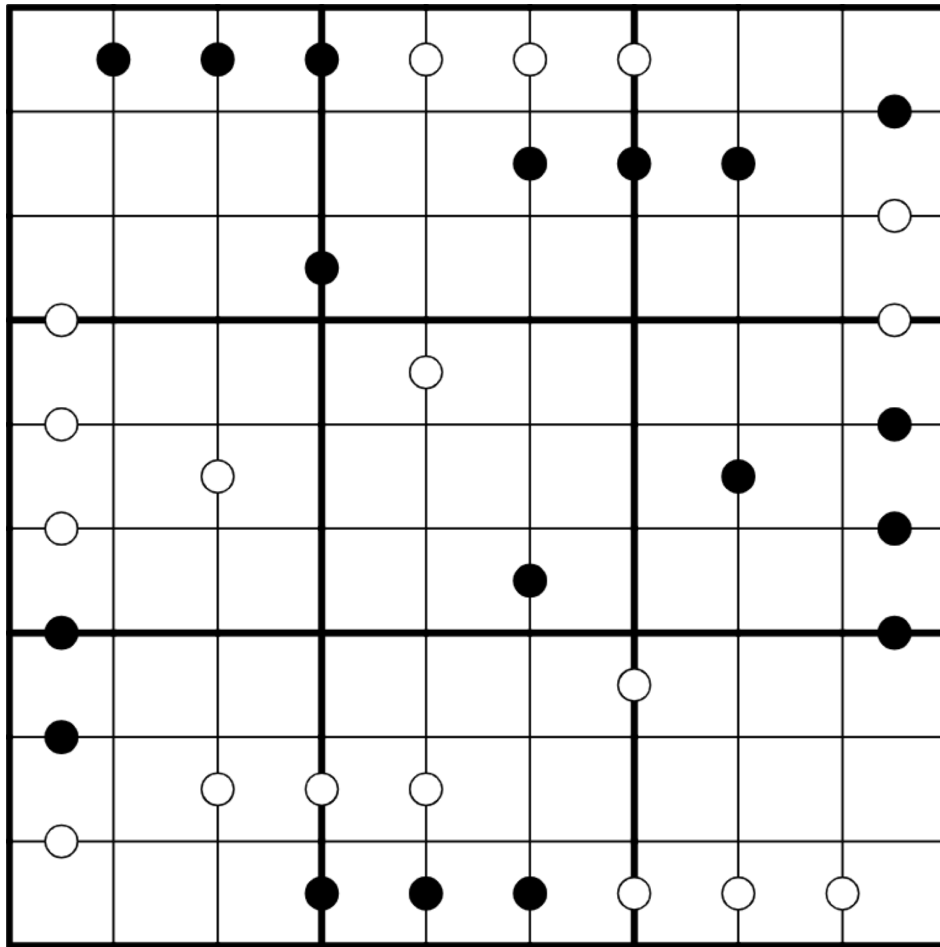
August 15, 2023: Kropki Pairs
clover!

It's halfway through the month, do you know where your bonus hats are? @Sarah Clark @Widowerofdoom @Chaotic Solving @Paty @merqyuri (🎩x78, 🧡x319, 🧟x81) @zer0keefie @Jelain @sudactylkuro 🐻 @anyeyeball @Jordyn @\$50,000 on the Wall @abihummel @EvenEagle @notabadger @PulverizingPancake @Rob Miller @n107yuh @DreamLibrarian @rotiro @Tublu the Honest @fiboway @MrScaryMuffin 52 🧟491 🎩249 🧡81 🧟 @Yoshi Baroshi @dangernoodle @MrDon @zachb20 @sararielle 🧟A4 🧡175 🎩11C 🐦 F 🧟4B 🧟22 @meadowphoenix @rufnredy @atroposhears @Aesewesen 🐻 @Shogia-411 🧟177 🧟5 🐦1416 🧡🎩4 🧟 @AriFleisch @Neverstxp (30 🧟234 🎩135 🧡20 🧟) @Amy Steele @Jade @SSGranor [10k pack in archive] @MikoKisai @I_Love_Legos @Albany @Mornicus @Mrtn and @ninefoxtails sure do - they're right there on top of their bonus heads. Congrats, guessers!

In today's **kropki pairs GAS**, normal sudoku rules apply. Also, digits separated by a white dot are consecutive. Digits separated by a black dot are in a 1:2 ratio. Not all possible dots are necessarily given.

For two party hats, finish within 6:30. For one party hat, finish within 12:00. All other solvers will earn a predictable Paranthodon.

↓↓ ↓↓ (The puzzle is on the next page) ↓↓ ↓↓



f-puzzles: <https://f-puzzles.com/?id=22324hxu>

CtC: <https://tinyurl.com/mzmxjdc9>

August 16, 2023: What's Next?

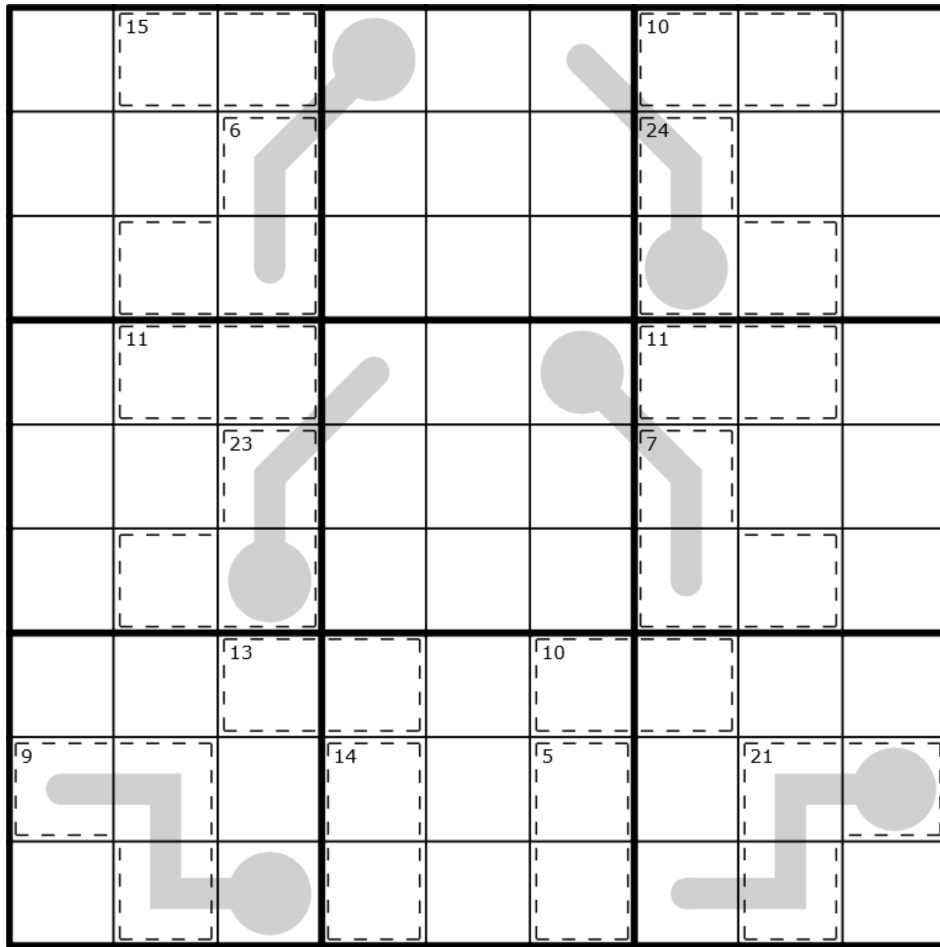
Bill Murphy

Gonna be honest gang, I made my puzzles for this month so long ago I've honestly kind of forgotten what I made for this, so thank you to the following people for reminding me of my **Thermo Killer Sudoku**: @sudactylkuro 🐻 @Jelain @zer0keefie @rotiro @Aesewesen 🐻 @Widowerofdoom @Jordyn @DreamLibrarian @n107yuh @Albany @Neverstxp (30 🧑🏻‍🎓 234 🎩 135 🧑🏻‍🎓 20 🧑🏻‍🎓) @SSGranor [10k pack in archive] @SMmarcus100 (287 🎩 344 🧑🏻‍🎓 51 🧑🏻‍🎓 17 🧑🏻‍🎓) @Shogia-411 🐻 177 🦀 5 🐦 1416 🧑🏻‍🎓 🎩 4 🧑🏻‍🎓 @EvenEagle @Mrtn @Sarah Clark (i've already used that joke before sorry) @MrScaryMuffin 52 🧑🏻‍🎓 491 🎩 249 🧑🏻‍🎓 81 🧑🏻‍🎓 @Paty @Rob Miller @anyeyeball @meadowphoenix @atroposhears @\$50,000 on the Wall @sararielle 🧑🏻‍🎓 A4 🧑🏻‍🎓 175 🎩 11C 🐦 F 🦀 4B 🐻 22 @PulverizingPancake @goldilocks @I_Love_Legos @merqyuri (🎩 x78, 🧑🏻‍🎓 x319, 🧑🏻‍🎓 x81) @Fawful @dangernoodle @MikoKisai @Amy Steele @AriFleisch @MrDon @fiboway @abihummel @ninefoxtails @Mornicus (see above)

(Even though this is during parent teacher interviews, never let it be said I'm not putting in the effort)

Normal sudoku rules apply. Digits in cages must not repeat and must sum to the small corner total, where given. Digits on a thermometer must strictly increase as they move away from the bulb.

⇓ ⇓ (The puzzle is on the next page) ⇓ ⇓



f-puzzles: <https://f-puzzles.com/?id=27pqegyh>
 CTC: <https://tinyurl.com/59e2nxtd>

August 17, 2023: Run It Back

Philip Newman

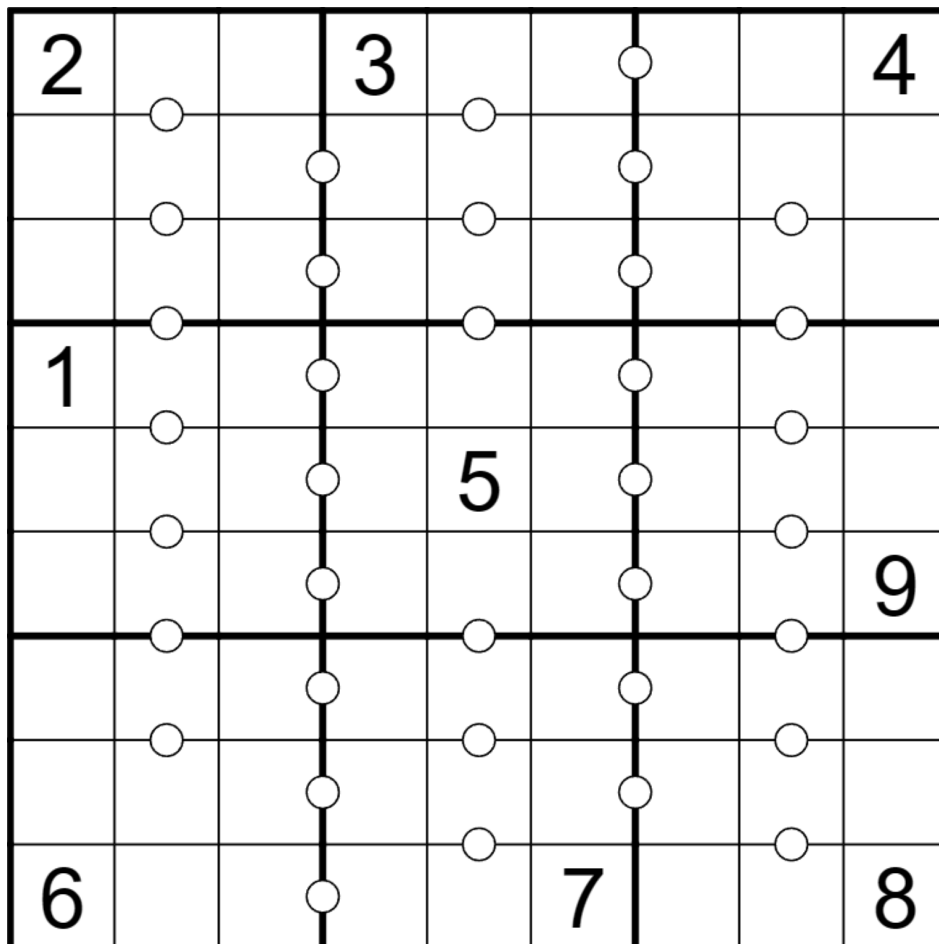
I was going to mention everyone who correctly guessed that today's **GAS** would be a **Consecutive Pairs Sudoku**, but *checks list of excuses* I'm all outta bubble gum.

In weather news, we've had a *run* of three *consecutive* relatively cool days; yesterday's high was only 94F/34C! Let's hope it continues today...

(It won't. High of 106/41 today, 108/42 tomorrow. 🤪)

Normal sudoku rules apply.

Consecutive Pairs: Digits in cells separated by a white dot must be consecutive (have a difference of 1). (No negative constraint - other pairs of adjacent digits may have a difference of 1.)



Play on f-puzzles: <https://f-puzzles.com/?id=29jw5p9n>

Play on CTC App: <https://tinyurl.com/2s397ty7>

August 18, 2023: Palindrome Killer clover!

Good morning, friends! Or should I say "yo, banana boy! Was it a car or a cat I saw?"

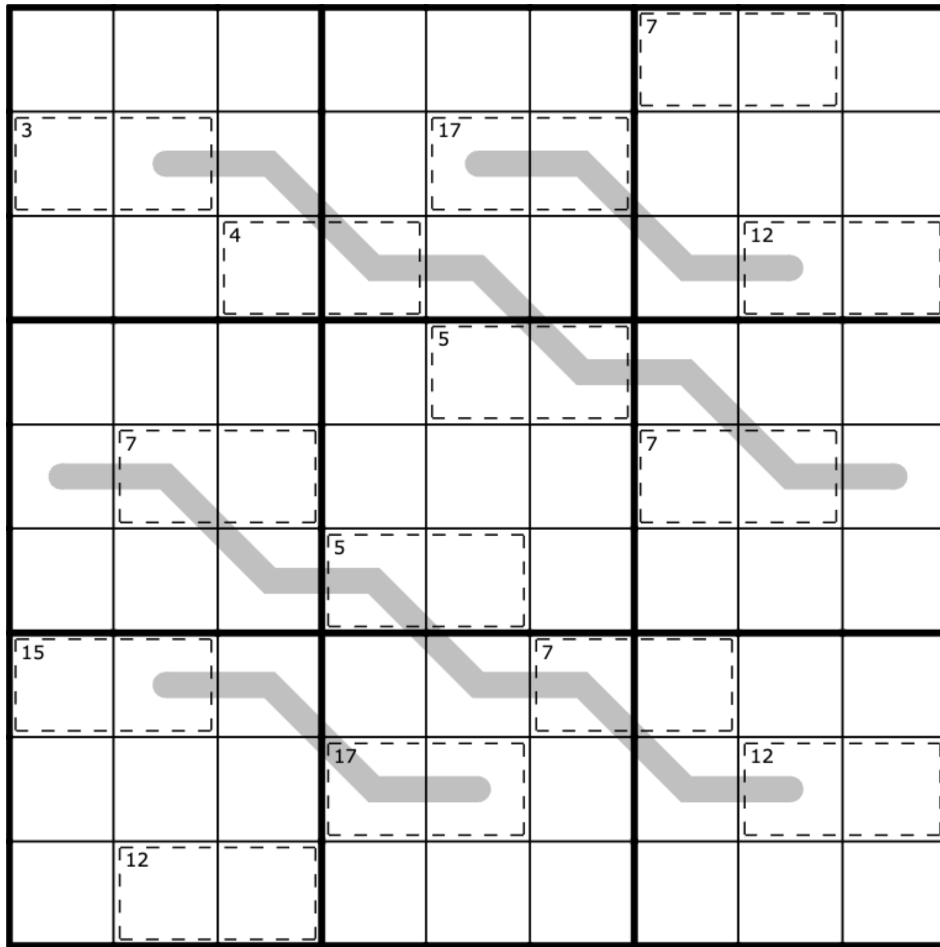
But my very favorite palindrome is also a piece of sage wisdom:

Pooping is a sign I poop.

Congrats to today's oozy rat(s) in a sanitary zoo: @Fawful @Jordyn @Tublu the Honest @rotiro @Albany @zer0keefie @sudactylkuro 🐭 @Jelain @SSGranor [10k pack in archive] @Shogia-411 🐭 177 🐞 5 🐦 1416 🐱 🎩 4 🐸 @meadowphoenix @EvenEagle @Rob Miller @fiboway @Neverstxp (30 🐱 234 🎩 135 🐱 20 🐸) @SMmarcus100 (287 🎩 344 🐱 51 🐸 17 🐱) @MrDon @MrScaryMuffin 52 🐱 491 🎩 249 🐱 81 🐸 @Amy Steele @DreamLibrarian @zachb20 @abihummel @n107yuh @sararielle 🐸 A4 🐱 175 🎩 11C 🐦 F 🐞 4B 🐭 22 @Paty @Sarah Clark @Tyler @PulverizingPancake @cait170301 @dangernoodle @Aesewesen 🐭 @Penguin22 @AriFleisch @MikoKisai @goldilocks @atroposhears @Mornicus and @ninefoxtails . You truly give love a bad name. 🍷

Today's GAS is a **palindrome killer sudoku**! Normal sudoku rules apply. Also, digits in cages do not repeat and must sum to the indicated totals. Digits along each gray line form a palindrome (read the same in both directions).

⇓ ⇓ (The puzzle is on the next page) ⇓ ⇓



f-puzzles: <https://f-puzzles.com/?id=236fj99t>
 CtC: <https://tinyurl.com/3wvv6nhy>

August 19, 2023: Point to Next Sudoku
 Bill Murphy

AAAAAA I'M SO BUSY WHAT TO HECK
 IT'S ALWAYS ONE THING THEN THE NEXT
 JUST LIKE TODAY'S GAS, A **POINT TO NEXT SUDOKU**
 I'D POINT TO ALL TODAY'S CORRECT GUESSERS BUT I SWEAR THIS IS NOT A
 BIT, I NEED TO GET UP AND GET GOING, SORRY, TAKE YOUR HATS IF YOU
 WERE CORRECT

Put the digits 1-9 in each box, row and column. If a digit N is placed in a cell containing an arrow, then the digit N+1 must be placed in a cell pointed at by the arrow. Not all possible arrows are given.

(That is, if you've never seen Point to Next Before, if r2c5 contained 1, r1c4 must contain 2.)

9		↖						
↑	↖	↑		↖		↖	↖	
↑		↑						↓
↑		↑						↓
↑			6		7			↓
↑						↓		↓
↑						↓		↓
	↘	↘		↘		↓	↗	↓
						↗		8

Penpa: <https://tinyurl.com/26qya8bc>

CTC: <https://tinyurl.com/2p8jxupx>

August 20, 2023: Nerf Herder
Philip Newman

Hats on if you correctly guessed that today's **GAS** would be a **Thermo Sudoku!** 🧐

NOBODY EXPECTED I WOULD POST TWO!

As is often the case when I set GAS, the original version of this puzzle was a bit much and I nerfed it a bit with some extra givens (spoilered image) [in this Leak: on separate page]. As is less often the case, the original version is very much solvable and so I've provided it for those who would like an extra challenge!

Normal sudoku rules apply.

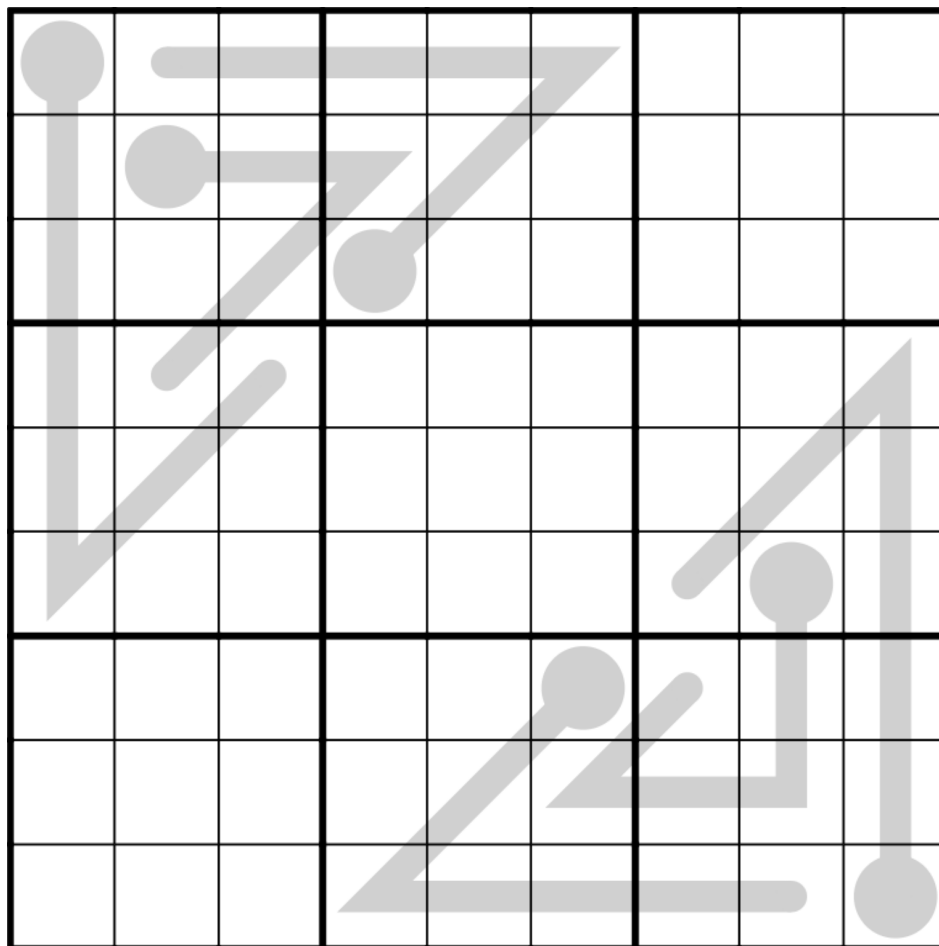
Thermo: Digits along thermometers must strictly increase from bulb to tip.

The same hat times apply for either version (they're a bit tight for the original and a bit generous for the official). If you solve the official version with givens, I do suggest taking a look at the no given version afterward and trying to figure out the break-in. 😊

[Note from the typesetter: I reordered the puzzles for this Leak. The harder version comes first, so not to spoiler it if you want to solve it first (I cannot spoiler images in a PDF like in Discord). The official GAS one is one page later.]

↓↓ ↓↓ (The harder puzzle is on the next page, the GAS one the page after) ↓↓ ↓↓

Mileage May Vary [NOT the GAS version! See next page for that version!]

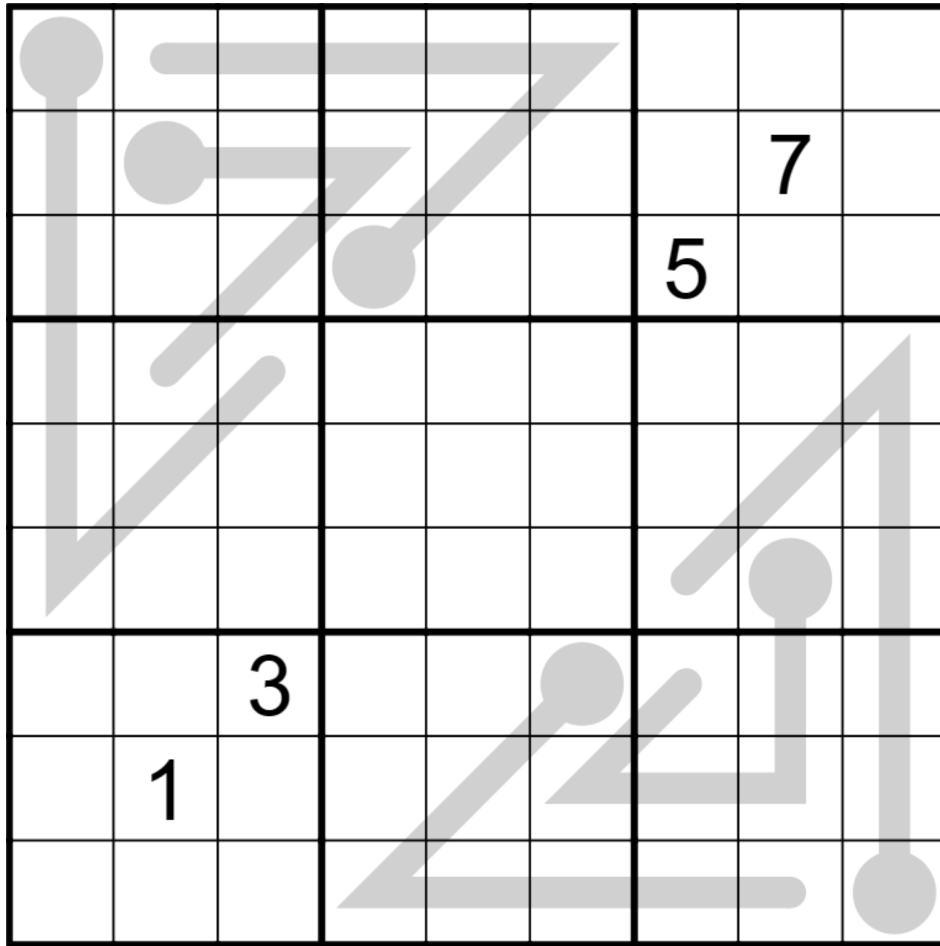


Play on f-puzzles: <https://f-puzzles.com/?id=27pbghzs>

Play on CTC App: <https://tinyurl.com/58zszc3m>

⇓⇓ (The GAS puzzle is on the next page) ⇓⇓

GAS



Play on f-puzzles: <https://f-puzzles.com/?id=23knfq4v>
Play on CTC App: <https://tinyurl.com/227fzr5e>

August 21, 2023: Classic
clover!

A surprisingly large number of you predicted yesterday that I'd completely lose my mind today and post a **classic sudoku**. Bonus hats all around for @EvenEagle @Sarah Clark @abihummel @Chaotic Solving @dangernoodle @merqyuri (🎩x78, 🐱x319, 🐸x81) @AriFleisch @Jordyn @Widowerofdoom @meadowphoenix @DreamLibrarian @atroposhears @Aesewesen 🐷 @Emphyrio @MrDon @sudactylkuro 🐷 @Jelain @rufnredy @sararielle 🐸 A4 🐱 175 🎩 11C 🐦 🦀 4B 🐷 22 @Neverstxp (30 🐱 234 🎩 135 🐱 20 🐸) @anyeyeball @Yoshi Baroshi @Shogia-411 🐷 177 🦀 5 🐦 1416 🐱 🎩 4 🐸 @Ptown356 @Tublu the Honest @Albany @\$50,000 on the Wall @MrScaryMuffin 52 🐱 491 🎩 249 🐱 81 🐸 @Mornicus @Rob Miller @MikoKisai @goldilocks @Amy Steele @fiboway @cait170301 @SSGranor [10k pack in archive] @zer0keefie @Paty @ninefoxtails and @Mrtn ! Don't wear 'em all in one place.

In today's **classic sudoku**, normal sudoku rules apply. And that's it!

		7	8	6				
		6						
3	4	5				1		
2					3			
1								2
			4					3
		8				6	5	4
						7		
				5	9	8		

f-puzzles: <https://f-puzzles.com/?id=29I9pshd>

CtC: <https://tinyurl.com/mtx9s5sv>

August 22, 2023: Uzumaki
Bill Murphy

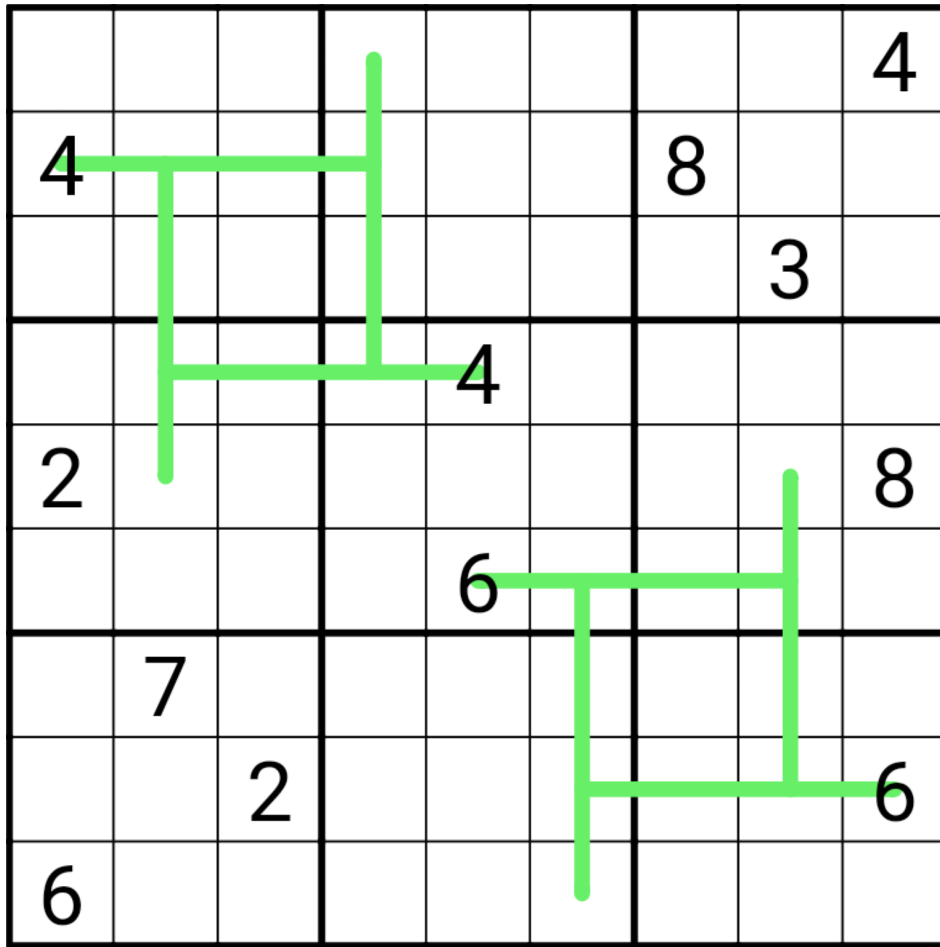
I totally forgot that I had to post GAS tonight tbh, I'm out at trivia again! (For those playing along at home, I've won about 7 of these nights, it's a nice way to never pay for a night out.

Today's GAS is a German Whispers. I hope that there's bonus hats all around for @EvenEagle @Sarah Clark @abihummel @Chaotic Solving @dangernoodle @merqyuri (👑x78, 🍷x319, 🐸x81) @AriFleisch @Jordyn @Widowerofdoom @meadowphoenix @DreamLibrarian @atroposhears @Aesewesen 🐷 @Emphyrio @MrDon @sudactylkuro 🐷 @Jelain @rufnredy @sararielle 🐸A4 🍷175 👑11C 🐦F 🦀4B 🐷22 @Neverstxp (30 🍷234 👑135 🍷20 🐸) @anyeyeball @Yoshi Baroshi @Shogia-411 🐷177 🦀5 🐦1416 🍷4 🐸 @Ptown356 @Tublu the Honest @Albany @\$50,000 on the Wall @MrScaryMuffin 52 🍷491 👑249 🍷81 🐸 @Mornicus @Rob Miller @MikoKisai @goldilocks @Amy Steele @fiboway @cait170301 @SSGranor [10k pack in archive] @zer0keefie @Paty @ninefoxtails and@Mrtn ! Don't wear 'em all in one place.

(I've never copied anything in my life, how dare you imply anything else)

In today's **German Whispers**, normal sudoku rules apply. Digits along green lines must differ by at least 5.

↓↓ ↓↓ (The puzzle is on the next page) ↓↓ ↓↓



f-puzzles: <https://f-puzzles.com/?id=278nfpsw>
 CTC: <https://tinyurl.com/dfy458as>

August 23, 2023: Split an Arrow in Twain!
Philip Newman

Congrats to everyone who "guessed" today's **GAS** would be a **Killer Arrow Sudoku!**

Am I out of Monty Python references? Probably not. But for some reason this scene from Robin Hood: Men in Tights came to mind...

<https://www.youtube.com/watch?v=ZXRb6nPcx10>

Normal sudoku rules apply.

Killer: Digits in cages cannot repeat and must sum to the total given.

Arrow: Digits along arrows must sum to the circled total.



14 ↙ ○			18 ← ○			8 ← ○
↓						○
			6 ○	→	10	
18 ○		↑			○	16 ↑
↓		↑			↓	↑
		16 ○			7	○
			←	○		
8 ○						14 ↑
○	→		16 ○	→		○

Play on f-puzzles: <https://f-puzzles.com/?id=2xrqv7dz>

Play on CTC App: <https://tinyurl.com/33k96jt8>

August 24, 2023: Antiking
clover!

Viva la revolución! The following solvers are preparing the guillotines with a successful prediction of **antiking sudoku**:

@Yoshi Baroshi @Eve the Eevee @DreamLibrarian @Jordyn @Albany @Jelain
@PulverizingPancake @dangernoodle @ninefoxtails @MikoKisai @Mornicus
@merqyuri (🎩x78, 🧡x319, 🦋x81) @Sarah Clark @meadowphoenix @rotiro
@zer0keefie @Widowerofdoom @sudactylkuro 🐘 @EvenEagle @Paty @atroposhears
@Amy Steele @Aesewesen 🐘 @Rob Miller @MrScaryMuffin 52 🧑🏻‍🎨491 🎩249 🧡81 🦋
@I_Love_Legos @Tublu the Honest @Mrtn @zachb20
@sararielle 🦋A4 🧡175 🎩11C 🐦 F 🦋4B 🧑🏻‍🎨22 @anyeyeball @SSGranor [10k pack in
archive] @MrDon @fiboway @abihummel @AriFleisch
@Shogia-411 🧑🏻‍🎨177 🦋5 🐦1416 🧡🎩4 🦋 @goldilocks @Neverstxp
(30 🧑🏻‍🎨234 🎩135 🧡20 🦋) @cait170301 @Thod @\$50,000 on the Wall

In today's GAS, normal sudoku rules apply. Also, identical digits must never touch diagonally.

For two party hats, finish within 7:30. For one party hat, finish within 13:30. All other solvers will earn a rabble-rousing Rugops.

⇓ ⇓ (The puzzle is on the next page) ⇓ ⇓

		1					2	
8	7	2					1	
				7			4	3
4		5				1		8
7	8			3				
	5					6	3	4
	6					5		

f-puzzles: <https://f-puzzles.com/?id=2bzgmk6>

CtC: <https://tinyurl.com/2s3pjzdd>

August 25, 2023: Swoon

Bill Murphy

Ok, so when we decided the theme for REDACTED August, I saw what my draw was and groaned audibly, the draw of German Whispers, Fortress, Two-Digit Arrows and finally today's **Sandwich Sudoku** was a very tough gauntlet of things to make GAS. I got through it and at least I can hand out bonus hats to:

@Yoshi Baroshi @Eve the Eevee @DreamLibrarian @Jordyn @Albany @Jelain
@PulverizingPancake @dangernoodle @ninefoxtails @MikoKisai @Mornicus
@merqyuri (👑x78, 🧡x319, 🦎x81) @Sarah Clark @meadowphoenix @rotiro
@zer0keefie @Widowerofdoom @sudactylkuro 🐘 @EvenEagle @Paty @atroposhears
@Amy Steele @Aesewesen 🐘 @Rob Miller @MrScaryMuffin 52 🧡491 👑249 🧡81 🦎
@I_Love_Legos @Tublu the Honest @Mrtn @zachb20
@sararielle 🦎A4 🧡175 👑11C 🐘F 🦎4B 🐘22 @anyeyeball @SSGranor [10k pack in
archive] @MrDon @fiboway @abihummel @AriFleisch
@Shogia-411 🐘177 🦎5 🐘1416 🧡👑4 🦎 @goldilocks @Neverstxp
(30 🧡234 👑135 🧡20 🦎) @cait170301 @Thod @\$50,000 on the Wall

(I've never copied anything in my life, how dare you imply anything else)

In today's **Sandwich Sudoku**, normal sudoku rules apply. Clues outside the grid give the sum of digits between 1 & 9 in that row or column.

↓↓ ↓↓ (The puzzle is on the next page) ↓↓ ↓↓

	2	7	28		15		29	5	3
6								8	
4									
9									
	1								
			3	4	5	6	7		
									9
10									
2									
9		2							

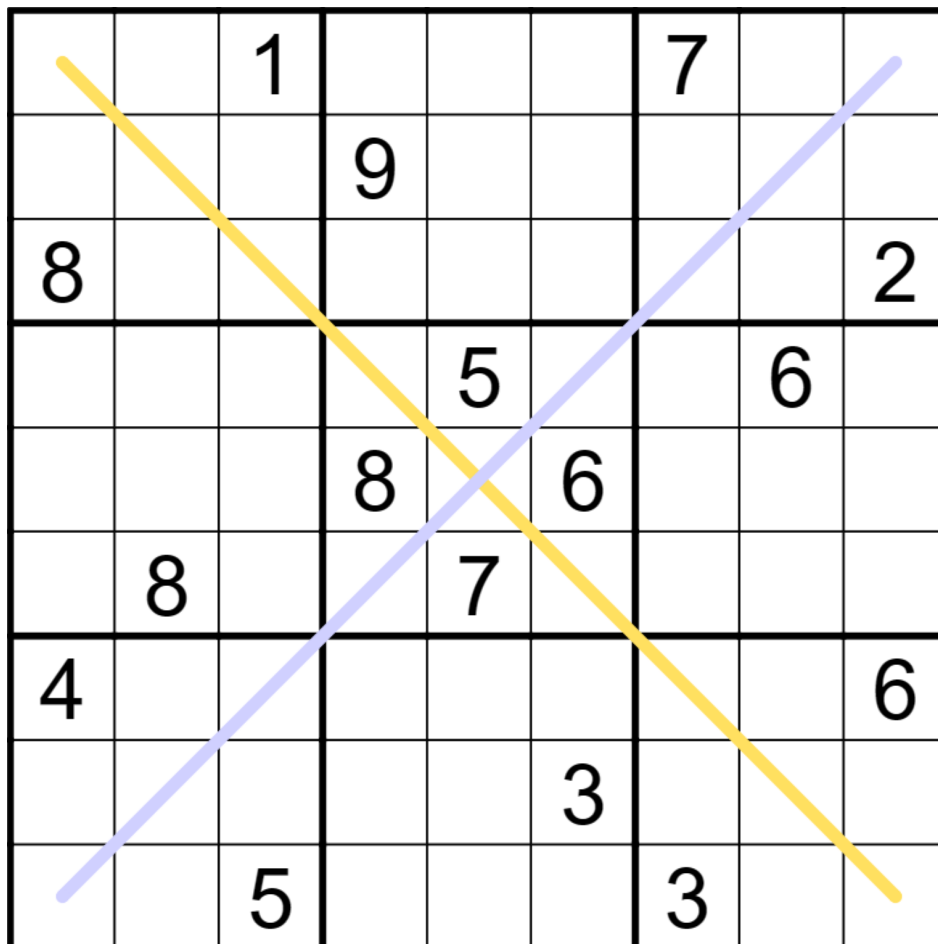
F-puzzles: <https://f-puzzles.com/?id=25o4kzob>
 CTC: <https://tinyurl.com/5ez5t3d3>

August 26, 2023: Pete and Repeat
Philip Newman

Congrats to those who correctly predicted today's Antidiagonal Sudoku 🤖. We will also accept "Anti Diagonal", "Anti-Diagonal", and "Auntie Diagonal". (This pronunciation may offend Mark.)

Normal sudoku rules apply.

Antidiagonal: Each marked diagonal only contains three distinct digits.



Play on f-puzzles: <https://f-puzzles.com/?id=235v5qpr>

Play on CTC App: <https://tinyurl.com/3xp2bpkn>

August 27, 2023: Classic Sudoku

jovi_al

Two very polite-sounding British accents can be overheard in the distance.

"That's right, *only two bonus hats*, to @Aesewesen 🐜 and @SMmarcus100 (287 🎩 344 🤩 51 🐸 17 🧑)!"

"I don't believe it, after such a successful month, the solvers lose it in the end?!"

"Rumour has it that the GAS team..."

The speaker trails to a whisper, careful not to be heard by any potential eavesdroppers.

"RUN OUT OF BONUS HATS?!"

"Quiet, someone might hear you! And besides, I don't see you having any!"

"Well, that's rather rude, I don't see you still solving GAPP!"

"Hey now, solving GAS is *your* job. Surely you should have a bonus hat or two by now."

Today's puzzle is a **classic Sudoku**. Maybe you'll have better luck getting a bonus hat tomorrow? Assuming there still are any, that is.

Rules: Place a digit from 1-9 into every cell such that every digit appears in every row, column, and thickly outlined 3x3 region.

⇓⇓ (The puzzle is on the next page) ⇓⇓

	1	2	3	4				
		7	1					5
							1	6
							9	7
9								8
7	2							
6	5							
8					9	3		
				3	1	8	6	

f-puzzles: <https://f-puzzles.com/?id=28f5ynkz>
 SudokuPad: <https://tinyurl.com/5hmaa9u8>

August 28, 2023: Kropki Pairs Sudoku
shye

Uh oh! No no no... we can't have this many correct guesses again surely? Yesterdays was supposed to throw you for a loop! Well then, I hope those who guessed a Kropki Sudoku (or a puzzle by Tyrgannus) wont complain about their slightly smaller bonus hats, you may collect them yourselves right here to your left. Whereas @Mrtn and @Shogia-411 🐻 177 🦀 5 🐦 1416 🧡 🎩 4 🐸 get the regular size for correctly guessing **Kropki Pairs Sudoku**, be precise please!

I'm sure you're all familiar with the rules, but I'm traditional so if you don't mind, *ahem*, let me just open my scroll here...

Rules: Each row, column, and 3x3 box must contain the digits 1 through 9. Cells separated by a white dot must be consecutive, and cells separated by a black dot must have a 1:2 ratio

Before you ask, not all dots are necessarily given. I know, I know, you all seemed to want it, but we're not doing that today!

1			●			○		6
			●			○		9
			●			○		3
●	●	●						2
						○		1
						○		4
○	○	○	○	○	○			7
								5
3	7	6	5	4	1	9	2	8

Solve on F-Puzzles: <https://f-puzzles.com/?id=2cr3jll>
Solve on CTC App: <https://tinyurl.com/dduejy78>

August 29, 2023: Search Nine Sudoku
Menderbug

Hello everyone! I'm Menderbug and I have recently joined the GAPP team, so today I have the honour to present you with a guest puzzle. That said, I'm a bit annoyed right now. I had *just* finished constructing this lovely Choco Banana, when Freddie barges in and spills a bunch of arrows all over my puzzle. He really needs to be more careful with those. I'm pretty sure the clues under the arrows were 1, 1, 2, 2, 4, 5, 5, 5, 7, 7, 8, and 9, but I can no longer remember which one goes where. Well, what can you do. In the end, I decided to just add some grid lines and pass this off as a **Search Nine Sudoku** instead. (Fair warning: the Choco Banana is not "genuinely approachable" but it is logically solvable.)

It seems that most of you have caught onto the new pattern, so I no longer have the necessary space to hand out individual bonus hats. So please take a hat off the rack if you guessed correctly.

Rules: Normal sudoku rules apply. Also, digits in arrow cells tell you how far it is to the digit 9 in that direction.

2				↓				3
		3	←	8	←	6		
		↓				↑		
→		5				2		←
		↓				↑		
		1	→	4	→	7		
5				↑				4

CTC App: <https://tinyurl.com/y8z9a7nu> f-puzzles: <https://f-puzzles.com/?id=2718ktzj>

Penpa+: <https://tinyurl.com/27ujcnt2>

August 30, 2023: XV

Freddie Hand

Congrats to everyone who obtained bonus hats. I count XV + XV correct guesses so come along and claim them quickly if you want a fedora rather than a fez.

Clumsy me managed to XD spill emoticons all over my classic, so OwO this is now an **XV Sudoku!**

Note: this is not the same as XV Pairs Sudoku!! In particular, there is a negative constraint. A pair of cells that doesn't have a V or X between them cannot sum to 5 or 10.

Rules:

Normal Sudoku rules apply. Every pair of orthogonally adjacent cells which sum to 10 are marked with an X. Every pair of orthogonally adjacent cells which sum to 5 are marked with a V.

(For clarity, all Xs and Vs are given.)

	x	v	2		3		
					3		
6	3			8		1	
			x	v			
			6		7		
					x	v	
		5		6			4 7
			1				
		6		4	x	v	

f-puzzles: <https://f-puzzles.com/?id=24x3d9xt>
CTC: <https://tinyurl.com/3a3eeb4h>

August 31, 2023: Coordinate Sudoku

Walker

Hi everyone! I'm Walker from the GAPP team 🤗👋 It's the last day of the month, meaning that it's time to reveal the secret behind guessing the daily GAS variant! The variants posted this month are the same as the variants for the original GAS puzzles, starting with the first GAS on June 7, 2021. For the last five days of the month, the GAPP setters repeated the variants from the first GAS/GAPP swap week, starting on January 2, 2022. Between the guessing games and the swap week, August has had a lot to coordinate!

Speaking of coordinate... Today's GAS is a **Coordinate Sudoku**! Congrats to the 27 solvers who guessed correctly and earned a bonus hat! 🎩

Rules: Normal sudoku rules apply. The digits X, Y and Z in pill shapes (reading left to right) signify that $rXcY = Z$.

9							1	5
	5	4	3					
6	9							
		5				4		
						8	7	
				2	5		9	
2	7							8

f-puzzles: <https://f-puzzles.com/?id=2dznd3b9>

CTC: <https://tinyurl.com/33sjz2tp>

Bonus 1: XV (-) Sudoku
shye

Normal sudoku rules apply. Digits separated by an X sum to 10. Digits separated by a V sum to 5.

NEGATIVE CONSTRAINT: All possible Xs and Vs are given. If there is no X or V between two digits, they must NOT sum to 5 or 10.

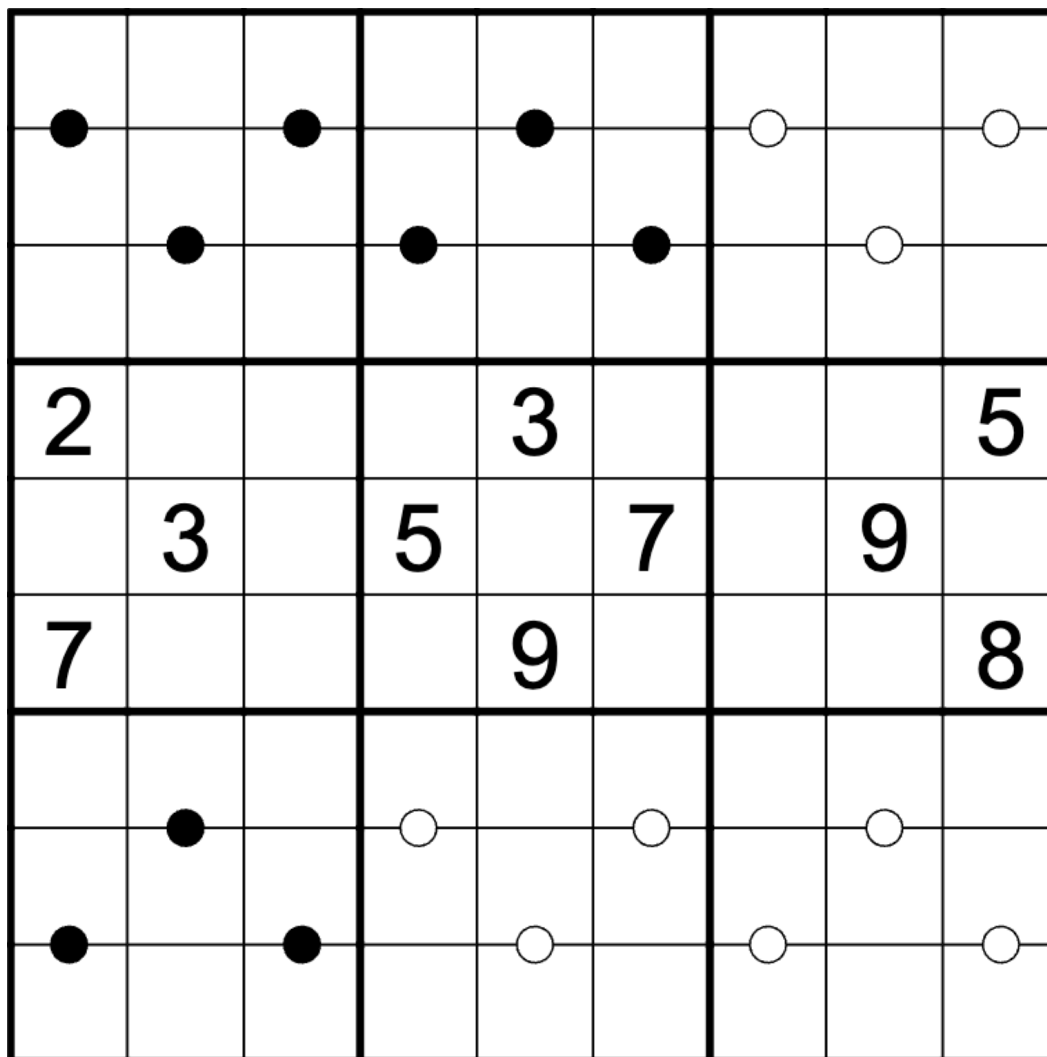
7		6						
	3		x	v				
2		8						
	x	v				x	v	
						7		1
			x	v		4		5
							9	

<https://f-puzzles.com/?id=24xp7dnz>
<https://tinyurl.com/5n7tjudd>

Bonus 2: Kropki Pairs Sudoku

shye

Normal sudoku rules apply. Cells separated by a white dot must be consecutive, and cells separated by a black dot must have a 1:2 ratio. Not all possible dots are necessarily given.



<https://f-puzzles.com/?id=2afn9v5t>
<https://tinyurl.com/yc54nnxh>

Bonus 3: It Takes 18 To Tango

jovi_al

Normal sudoku rules apply.

	7							5
6					8			
				4		9		
	5		8					
		9				2		
					3		6	
		2		9				
			5					6
4							8	

<https://f-puzzles.com/?id=27a9kjq>

<https://tinyurl.com/mmjz2y8>

Bonus 4: First 2 Odd Sum

Clover

Normal sudoku rules apply. Clues outside of the grid give the sum of the first two **odd** digits in that row or column, looking from the direction of the clue.

									6	8	8	12	
4			9		4	6							
		7						1					12
8		6											
		8											
												2	
												4	8
10			5										3
				8	2			9					8

<https://f-puzzles.com/?id=24ehswr>
<https://tinyurl.com/mws5r58f>

Bonus 5: Echolalia

Bill Murphy

Normal sudoku rules apply. **Disjoint groups:** Cells in the same position relative to their 3x3 region must not contain the same digit.

		3						8
	2		6				9	
1		5		9				
	4		8					
		7				3		
					2		6	
				1		5		9
	1				4		8	
2						7		

<https://f-puzzles.com/?id=2b4mlwkc>

<https://tinyurl.com/44dvjkwj>

Time Benchmarks



Two party hats



One party hat



Today's dinosaur:

Aug 1, 2023	9:30	18:00	Beginning Bonapartenykus
Aug 2, 2023	7:00	12:00	Innovative Igai
Aug 3, 2023	6:30	12:00	codependent Camelotia
Aug 4, 2023	9:00	18:00	Overcooked Opisthocoelicaudia.
Aug 5, 2023	10:00	25:00	Charitable Chucarosaurus
Aug 6, 2023	6:00	11:00	winking Wuerhosaurus
Aug 7, 2023	6:30	11:00	"beans" balaur
Aug 8, 2023	7:30	15:00	Thaumaturgic Tharosaurus
Aug 9, 2023	6:45	12:15	trusting Triceratops
Aug 10, 2023	7:35	13:35	Hungry Hungry Hungarosaurus
Aug 11, 2023	6:00	12:00	Neighborly Narambuenatitan
Aug 12, 2023	6:00	11:30	gregarious Gideonmantellia
Aug 13, 2023	6:30	12:00	Just arriving now Juratyrant
Aug 14, 2023	8:00	16:00	Scheming Schleitheimia
Aug 15, 2023	6:30	12:00	predictable Paranthodon
Aug 16, 2023	6:30	12:00	forgetful Fabrosaurus
Aug 17, 2023	6:54	12:34	Running Rugocaudia
Aug 18, 2023	6:45	12:30	so-late Talos
Aug 19, 2023	7:00	13:00	Busy Buitreraptor
Aug 20, 2023	7:00	14:00	All-Terrain Armored Amphicoelias
Aug 21, 2023	5:00	10:00	rare Richardoestesia
Aug 22, 2023	7:30	13:00	very rare Richardoestesia.
Aug 23, 2023	7:30	15:00	Tambatitanis in Tights
Aug 24, 2023	7:30	13:30	rabble-rousing Rugops
Aug 25, 2023	8:30	15:00	extremely rare Richardoestesia
Aug 26, 2023	8:00	15:00	Antioxidant Andesaurus
Aug 27, 2023	5:00	10:00	eavesdropping edmontonia
Aug 28, 2023	7:00	13:00	pedantic pectinodon
Aug 29, 2023	8:30	16:00	obscured othnielia
Aug 30, 2023	7:00	13:00	Roman Rajasaurus
Aug 31, 2023	9:00	16:00	Coordinated Corythoraptor

Hints

Hint for August 4, 2023

GAS 101: If you haven't seen it before, the total in the row 1 and 9 arrows is 36. Feel free to prove it to yourself, or you can take my word for it.

Spoiler for August 13, 2021:

I'm not usually a fan of setting clone sudoku because they're full of heavy pencil marking, but at their heart, they're just about triples and quadruples in a row or column. Philip did a clone a while back which was more focused on what was outside of the clone than what was inside of the clone and while that one was a little too hard for GAS, I was waiting for an opportunity to use that.