

GAS Leak

Genuinely Approachable Sudoku
from the CtC Discord

Volume 28:

May 1 – May 31, 2023

Welcome to May!

We got a full month of GAS puzzles for you, one better than the other. Enjoy clover's lemons, solve puzzles which sort-of contain invisible arrows without the circles or invisible thermos without the bulbs, and much more. Also you can learn how a new Zelda game affects setters – and how sudoku-setters flirt.

Hints given in the puzzle settings were moved to a page near the end of this Leak.

Have fun solving!

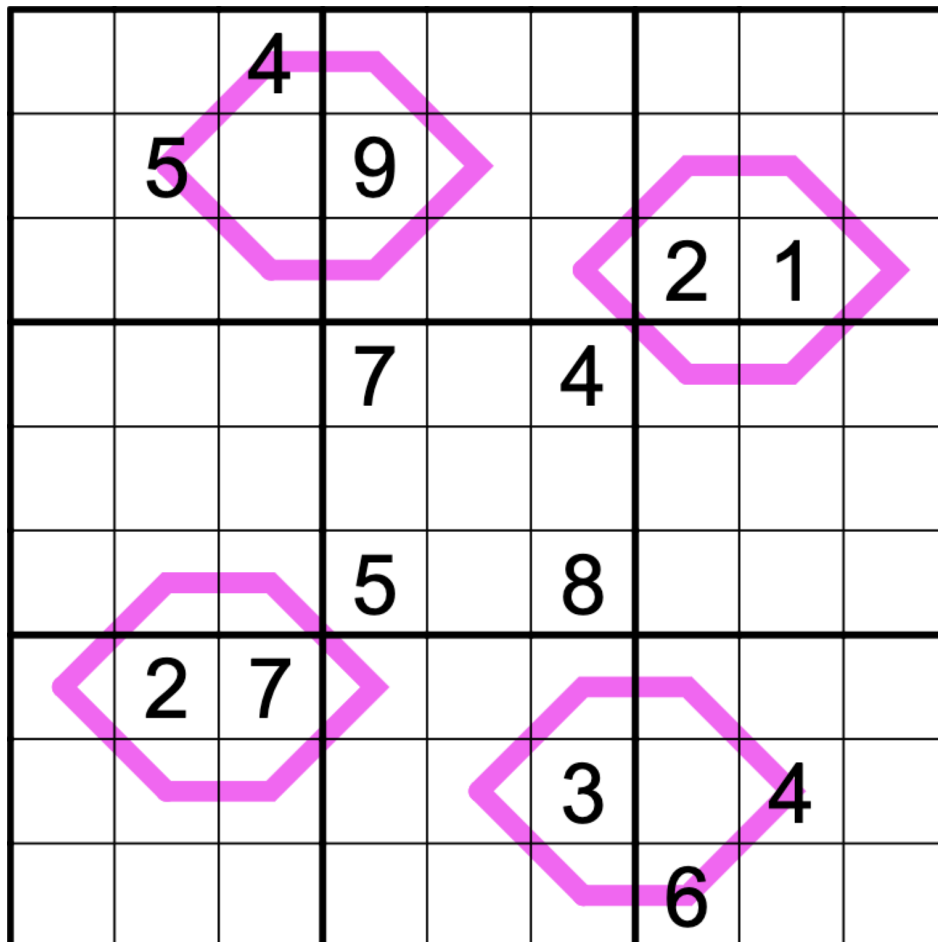
Engy

May 1, 2023: Raspberry Lemon
clover!

Even though **lemon sudoku** is one of our favorite variants here at GAS, there are only a few examples of it in existence that weren't created by GAS setters! Here's a very nice one set in 2017 by the inimitable Richard Stolk (warning: harder than GAS, although still quite reasonable):

<https://logic-masters.de/Raetselportal/Raetsel/zeigen.php?id=0002PT>

But today, we won't settle for lemons alone - instead, we're making (raspberry) lemonade with this delicious **raspberry lemon sudoku**. Normal sudoku rules apply. Also, the sum of the digits along each 'lemon' equals the two-digit number inside of that lemon, read from left to right. For instance, the sum of the digits along the topmost lemon equals the two-digit number you get by reading r2c3 and r2c4 as a two-digit number. Finally, each line also contains a set of consecutive digits, which can appear in any order. For instance, a line could contain the digits 431265.



f-puzzles: <https://f-puzzles.com/?id=2j6rccdp>
CtC: <https://tinyurl.com/4b92mrtc>

May 2, 2023: 2 Paintings by Nikolai Astrup
 Bill Murphy

I know no one now
 Now I say "you"
 Now after the ground has opened up
 Now after you died
 I wonder what could beacon me forward into the rest of life
 I can glimpse occasional moments
 Gleaming like bonfires burning from across the fjord

Happy Five Year Anniversary Lisa. I love you xo

Today's GAS is an **Odd/Even Sudoku**.

Normal sudoku rules apply. Cells with grey squares must contain even digits. Cells with grey circles must contain odd digits.

	○	1	■	■			4	5
	○	2	7	8			○	○
	3	4	6	○			7	■
	■	■	5	○			8	■
	7	○	8	9			○	○
	8	○	■	■			5	9

f-puzzles: <https://f-puzzles.com/?id=2e4ewodd>

CTC: <https://tinyurl.com/5vz5sp89>

⇓⇓ Additional poem on next page ⇓⇓

Nikolai Astrup, he also died young at 47
Right after finishing building his studio at home
Where he probably intended to keep on painting his resonant life into old age
But sometimes people get killed before they get to finish
All the things they were going to do
That's why I'm not waiting around anymore
That's why I tell you that I love you.

May 3, 2023: The Eye of the Storm
Philip Newman

I didn't forget today! I'm just sloooooow.

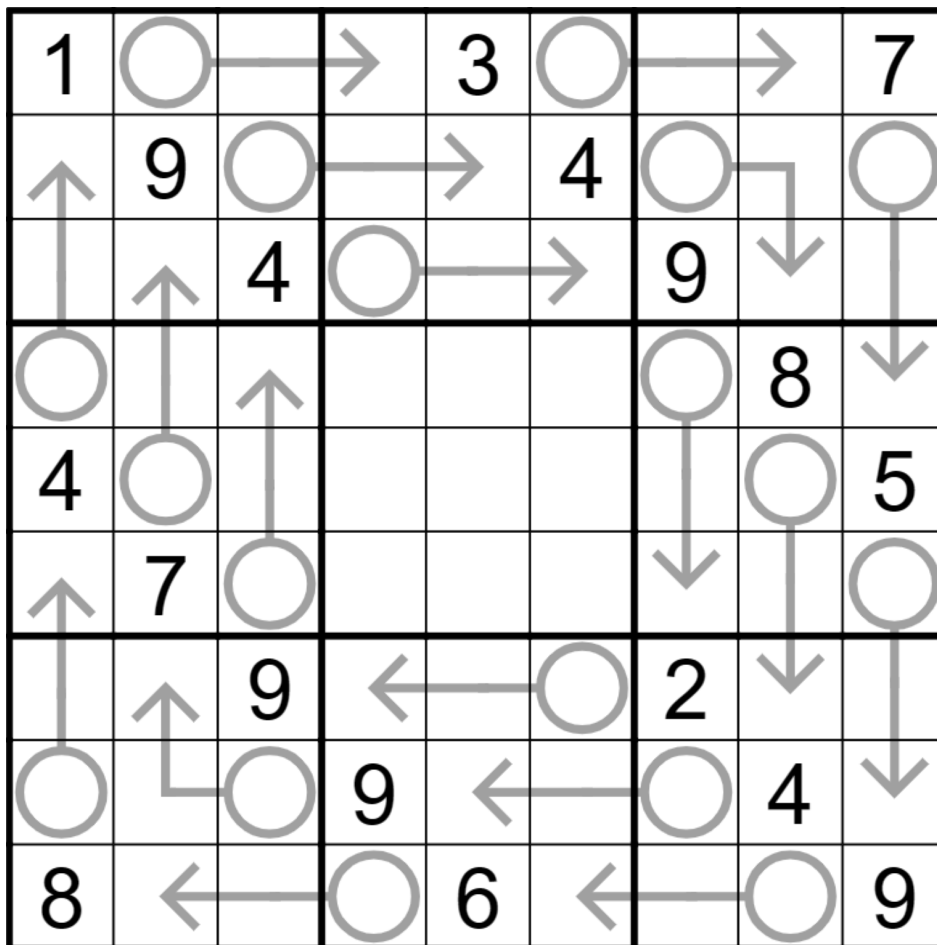
Hopefully you won't find today's **GAS** as slow. It's an **Arrow Sudoku**, and like the Arrow Sudoku I posted exactly a month ago it is *not* unique without givens so I can get away with giving you a few extra. [The hint is on the Hints page of this GAS Leak]

In other news, @akash doulani has recently released the latest book in the excellent **World of Sudoku** series! For more information, click here:

<https://discordapp.com/channels/709370620642852885/709373384437268530/1102835820190244894>

Normal sudoku rules apply.

Arrow: Digits along arrows must sum to the circled total. (Digits may repeat if allowed by other rules.)



Play on f-puzzles: <https://f-puzzles.com/?id=2nluardm>

Play on CTC App: <https://tinyurl.com/4cxdxahs>

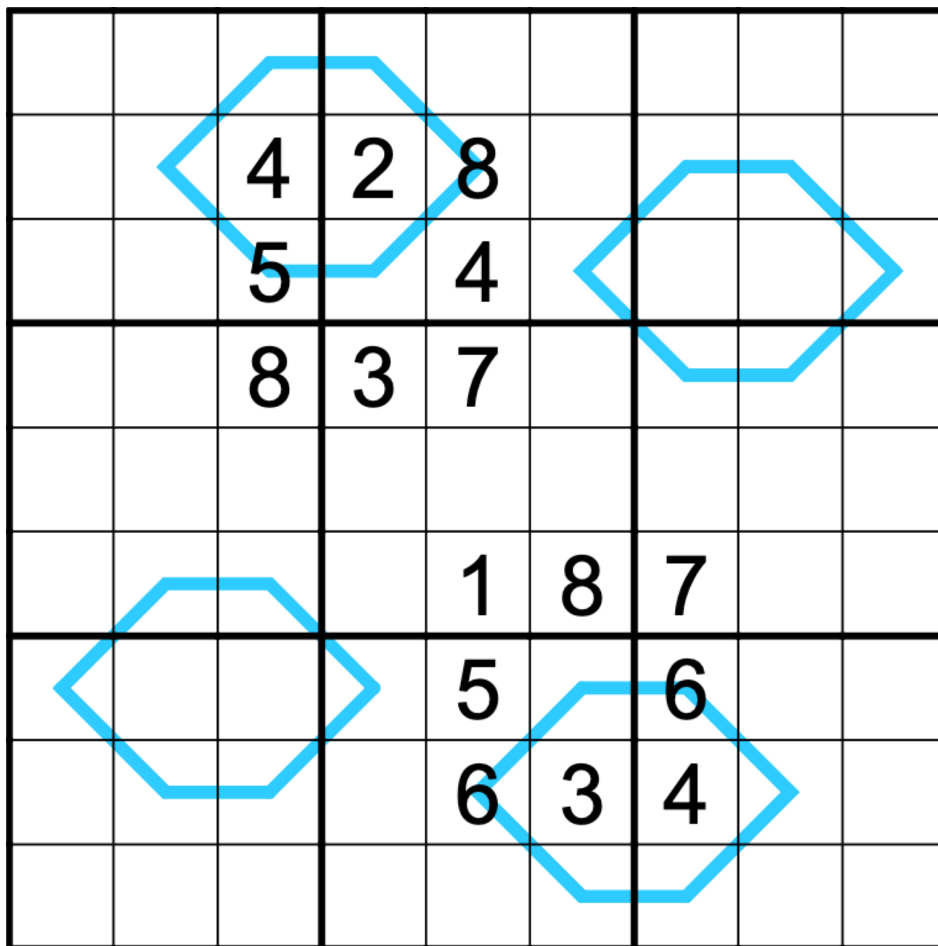
May 4, 2023: Blueberry Lemon
 clover!

I'm feeling optimistic today! Life may give me some blueberry lemons, but I'll just make a pitcher of blueberry lemonade. 🍷 🍋

In this **blueberry lemon sudoku**, normal sudoku rules apply. Also, lemon sudoku and region sum lines rules apply, as described below:

Lemon: the digits on each 'lemon' shape sum to the two-digit number on the inside of the lemon (formed by reading the digits in the two interior cells from left to right). Digits may repeat on lemons.

Region sum lines: each blue line travels through multiple 3x3 regions. Along each line, the sum of the digits within each region is equal. For instance, on the top left lemon, the sum of the digits in region 1 equals the sum of the digits in region 2. Different lines may or may not have different sums.



f-puzzles: <https://f-puzzles.com/?id=2j8z4qbs>
 CtC: <https://tinyurl.com/hf4rtvzs>

May 5, 2023: Come on and Sum

Bill Murphy

Happy Friday! Congratulations to all who celebrate the following:

Cinco de Mayo

May the 4th be with you/Revenge of the 5th

Bandcamp Friday

My mum's birthday (Hi mum)

World Portuguese Language Day

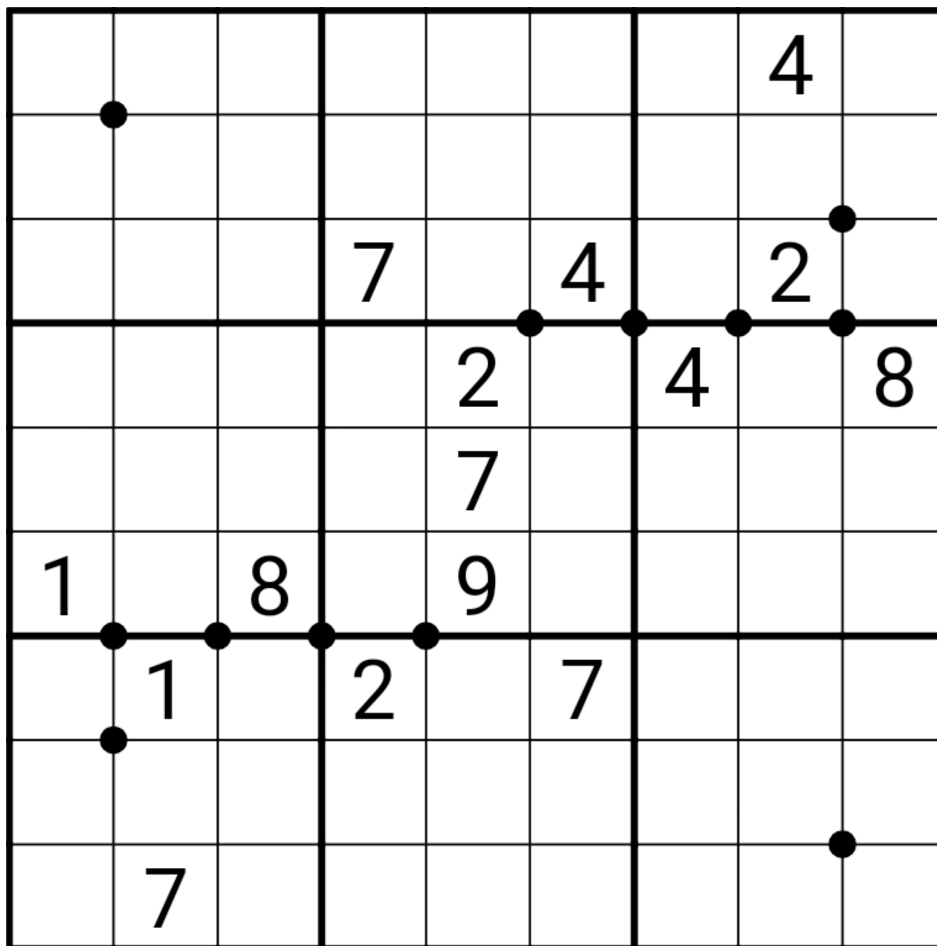
National Cartoonist Day

Let's Get Weird.

Today's GAS is a **Quad Sums** Sudoku.

Normal sudoku rules apply. A dot means the one of the connected digits is the sum of the other three. Not all dots are given.

(Around each dot, you could imagine it's a three cell long arrow, but I haven't told you where the bulb is. Sound GAS? Great)



F-puzzles: <https://f-puzzles.com/?id=2e644rah>

CTC: <https://tinyurl.com/2f9hee3b>

May 6, 2023: On the Ropes

Philip Newman

It's coronation day across the pond, let's see what constraints we have that would be on theme...

Oh. Oh dear.

Today's **GAS** is a ~~Antiking Sudoku~~ **No Touch Sudoku**, where digits can't touch themselves even diagonally and any similarity to the movement of chess pieces is purely coincidental.

Normal sudoku rules apply.

~~Antiking: Cells separated by a (chess) king's move cannot contain the same digit.~~

No Touch: Cells which are diagonally adjacent cannot contain the same digit.

			1	2	3			
						4	5	6
7	8	9						
9	3	5						
			2	4	8			
						6	7	1
						1	2	3
4	5	6						
			7	8	9			

Play on f-puzzles: <https://f-puzzles.com/?id=2eyh3ane>

Play on CTC App: <https://tinyurl.com/mrucsd6>

May 7, 2023: Peach Lemon
clover!

What do you mean, you're allergic to blueberries? Can't you just -

Oh, you really are swelling up like a balloon, aren't you. Carry on. 😬

In today's **peach lemon** GAS, normal sudoku rules apply. Also, lemon sudoku and entropic lines rules apply, as described below:

Lemon: the digits on each 'lemon' shape sum to the two-digit number on the inside of the lemon (formed by reading the digits in the two interior cells from left to right or top to bottom). Digits may repeat on lemons.

Entropic lines: along each line, each set of three adjoining digits contains exactly one low (123), one medium (456), and one high (789) digit. (Note: this implies that every line has a repeating pattern such as LMHLMH or LHMLHM).

				3				
	4	2	6					7
	5		2					
8								
								9
				2		6		
7				3	4	5		
				8				

May 8, 2023: Pointing Diagonal Sudoku
 Bill Murphy

Hey, I still get messages about my April 1st puzzle, so let's clear something up.

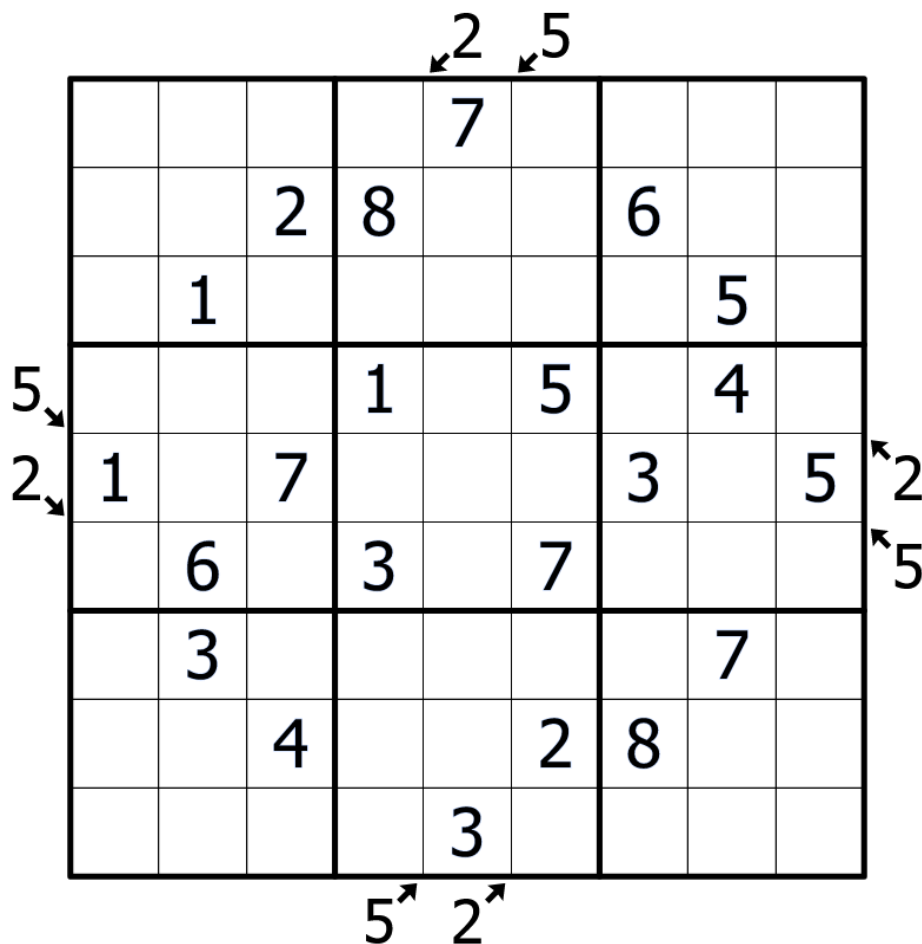
Before I cannibalized it for April Fools, the puzzle was initially made so that advanced users could spot the swordfish and use it, but being that this is **Genuinely Approachable Sudoku**, a swordfish as a sudoku technique doesn't really belong here, so the puzzle also needed to be solvable using naked and hidden singles, which it also was.

That's right, I set y'all up for a gas trick bypass.

Off in the distance, a man in a fluoro vest and hard hat sadly shakes his head, resets the counter of "Days since Bill said something silly in a GAS intro" back to 0.

Today's GAS is a **Pointing Diagonal Sudoku**.

Normal Sudoku Rules Apply. Numbers outside the grid indicate the number of different numbers placed in the cells in the corresponding diagonal direction.



CTC: <https://tinyurl.com/5n953y35>
 Penpa: <https://tinyurl.com/2ojuzbsg>

May 9, 2023: Hollow Knight
Philip Newman

Sometimes (like on Saturday), world events happen to line up perfectly with the puzzle I have ready to post. Sometimes they don't.

So... Happy 42nd birthday to Bill Murphy!

...no, not our @Legitimate Patreon Haver/Bill Murphy#3057, but rather the American baseball pitcher who was drafted 98th in the "Moneyball" draft of 2002, very close to half a lifetime ago. (If only the Oakland baseball team were the Knights.)

Today's **GAS** is an **Antiknight Sudoku!**

Normal sudoku rules apply.

Antiknight: Cells separated by a (chess) knight's move cannot contain the same digit.

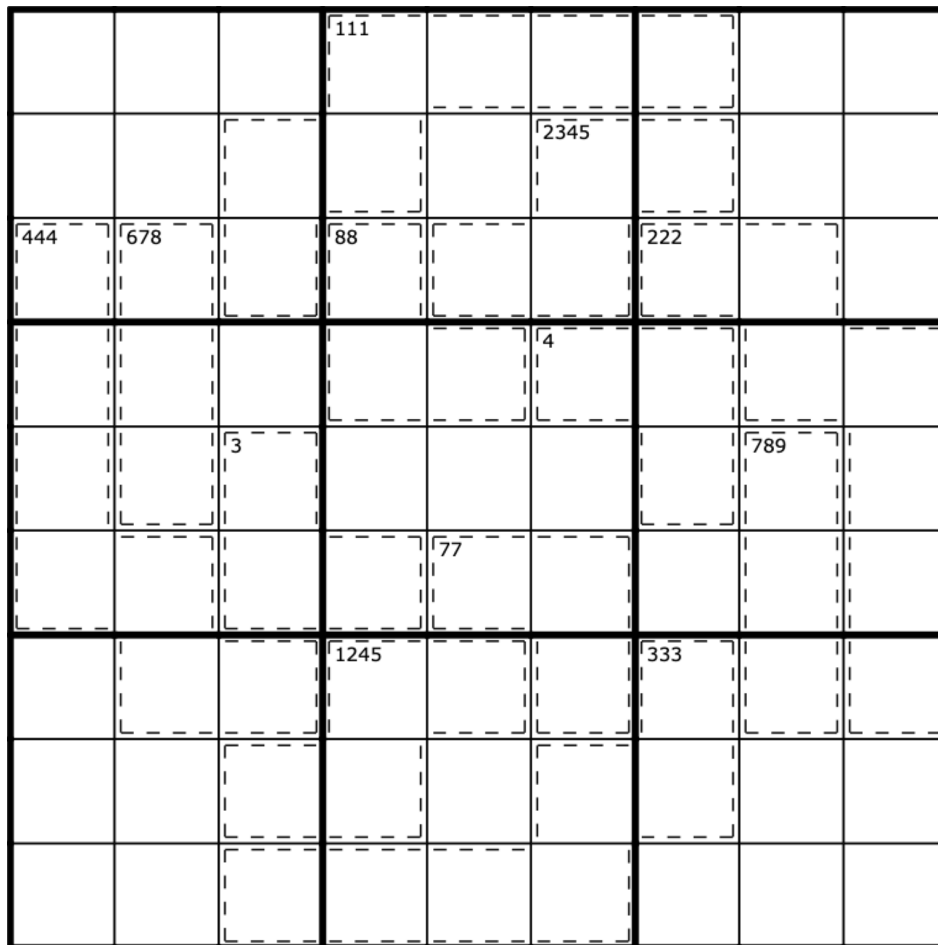
						3		
	3				5		1	
7		1	2	3	4	5		
	1	2				6		
		3				7		
		4				8	9	
		5	6	7	8	9		3
	9		5				7	
		7						

Play on f-puzzles: <https://f-puzzles.com/?id=2znsn52f>
Play on CTC App: <https://tinyurl.com/2p9bs2t7>

May 10, 2023: Zone Sudoku
clover!

Let's get out of our comfort zones, eat a calzone, zone out for a minute and not worry about the ozone layer for once - today's GAS is a **zone sudoku**.

Normal sudoku rules apply. Also, the clue in the top left corner of each cage tells you some of the digits that appear in that cage.



f-puzzles: <https://f-puzzles.com/?id=2jr6u8ss>
CtC: <https://tinyurl.com/26jnua2h>

May 11, 2023: Echolalia

Bill Murphy

Today's GAS is a **GASSic Sudoku**.

(I'm calling in sick tomorrow, but I've still gotta get work posted for the kids. A cowboy hat to the best impersonation of a me intro in the comments, I'll put my favourite in for Mark to read.)

(Tomorrow being the release of The Legend of Zelda: Tears of the Kingdom has nothing to do it, I swear)

Normal Sudoku Rules Apply.

	5	6	7	8				4
4					6			
3						8		
2		8		5				
1								9
				6		2		8
		2						7
			1					6
6				2	3	4	5	

f-puzzles: <https://f-puzzles.com/?id=2df2st6l>

CTC: <https://tinyurl.com/dhux49y9>

May 12, 2023: Tears of the Solver
Philip Newman

Today's **GAS** is a **Diagonal Sudoku**.

(Like Bill, I am sick. A cowboy hat to the best impersonation of a me intro in the comments, I'll put my favorite in for Mark to read.)

(Today being the release of The Legend of Zelda: Tears of the Kingdom has nothing to do with it, I swear.)

Normal sudoku rules apply.

Diagonal: Digits along the indicated diagonals cannot repeat.

	1	2				4	9	
3		4				2		1
5	6						8	3
				7				
			4		6			
				5				
6	3						7	8
8		5				3		9
	9	7				1	2	

Play on f-puzzles: <https://f-puzzles.com/?id=2hrrruwz>

Play on CTC App: <https://tinyurl.com/2ex64ed8>

May 13, 2023: Knapp Daneben Killer
 clover!

Bill and Philip both "sick"? Clover not posting until nearly 11 o'clock in the morning?
 Something is a little... *off* today. A little... *off-by-one*, as it were. 😊

In today's **knapp daneben killer**, normal sudoku rules apply. Also, digits in cages do not repeat and must sum to **either one greater or one less than the indicated total**.

2		6		10		14		9
14				7				
		5	10			2		4
10								
	8						7	8
6								
		3		10		4		12
10				6				
	12		8		3		9	

f-puzzles: <https://f-puzzles.com/?id=2nno2lqr>
 CtC: <https://tinyurl.com/mfjhrjde>

May 14, 2023: Clockfaces Sudoku

Bill Murphy

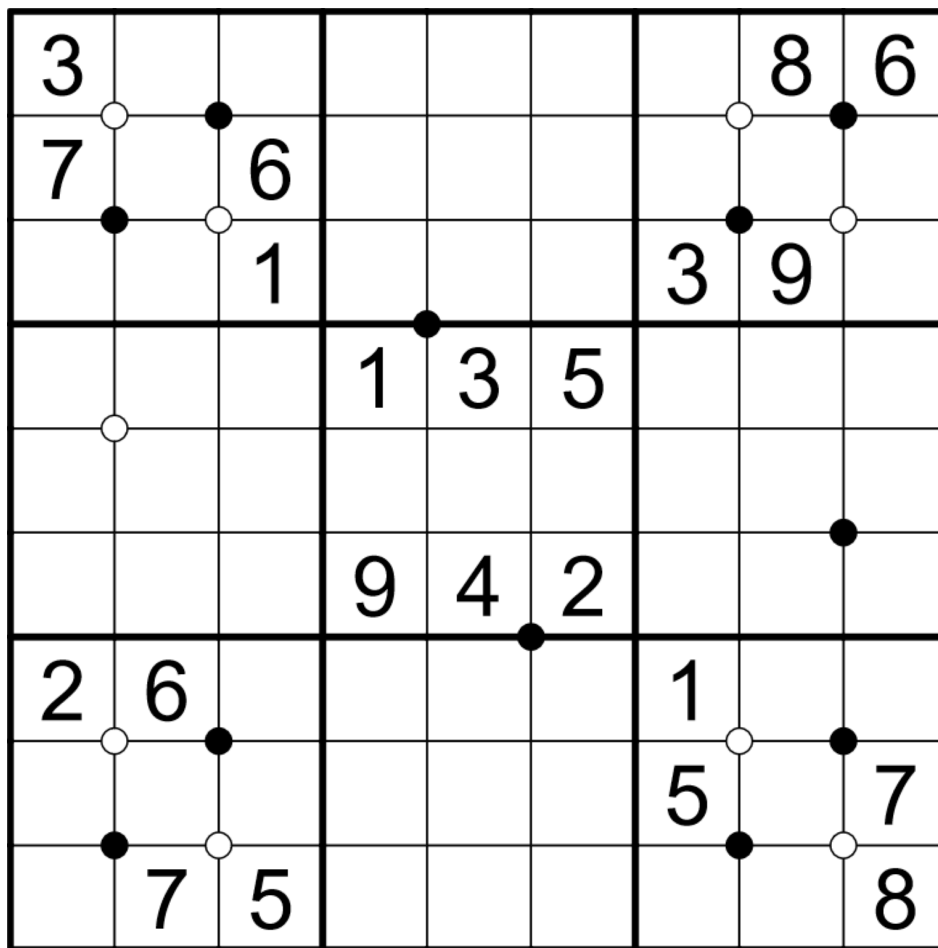
The GAS that solvers normally complain about are the math heavy ones. Lemme tell ya, things can always be worse. You could, hypothetically, have to go between clockwise and anticlockwise very quickly.

TIME FOR SOME NONSENSE

Today's GAS is a **Clockfaces Sudoku**

Normal Sudoku Rules Apply. Four digits around a white circle are placed in an increasing order starting from one of the four cells and going clockwise. Four digits around a black circle are placed in an increasing order starting from one of the four cells and going anticlockwise.

So it's thermo sudoku around the dot either going clockwise or anticlockwise and I haven't told you where the bulb is. Yeah I love y'all THAT MUCH. (The times are generous.)



f-puzzles: <https://f-puzzles.com/?id=2gu7gycw>

CTC: <https://tinyurl.com/yckaeuac>

May 15, 2023: Tears of the Kropki
Philip Newman

The design for today's completely original **GAS**, a **Difference/Ratio Pairs Sudoku**, is inspired by The Legend of Zelda: Tears of the Kingdom. (Which I have definitely not been playing all weekend.) See those interlocking tear shapes? Any similarity to puzzles which were published prior to the release of Tears of the Kingdom is purely coincidental, I swear.

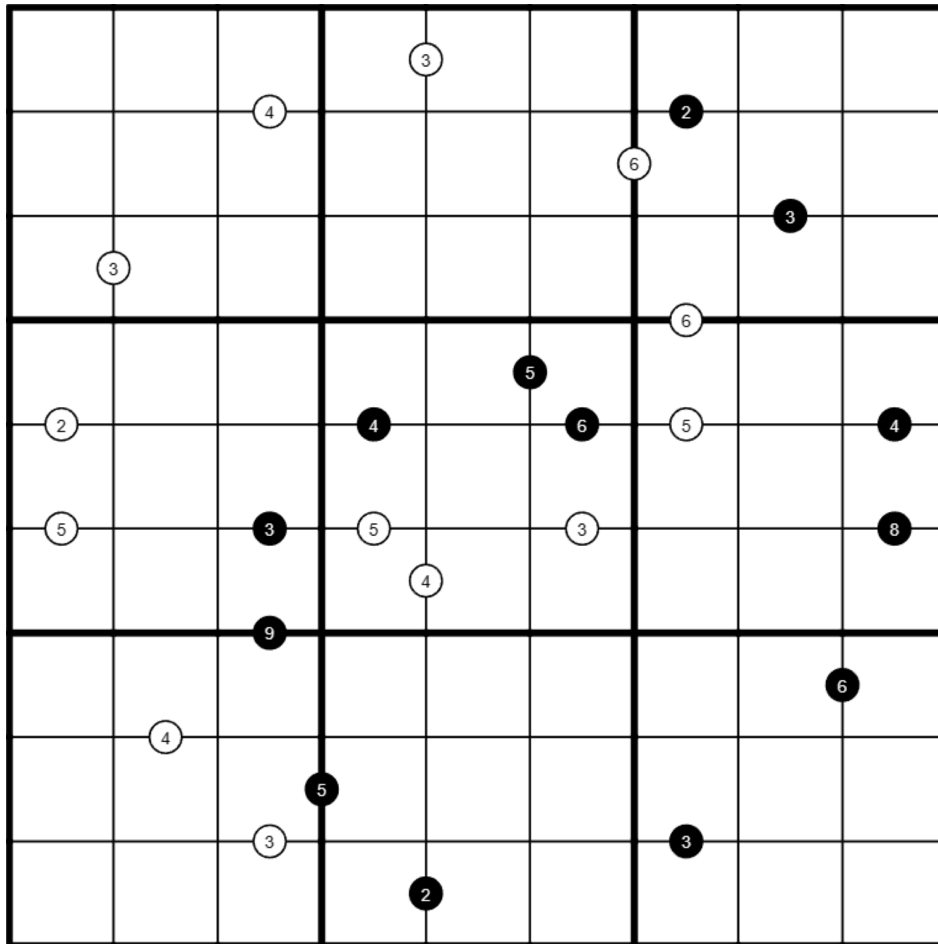
<https://www.youtube.com/watch?v=q9n61GR-Y-Q>

Wait, who put that link there? Bill, is one of your trenchcoat gremlins messing with my intros again?

Normal sudoku rules apply.

Difference Pairs: Digits in cells separated by a white dot must have the difference given.

Ratio Pairs: Digits in cells separated by a black dot must have the ratio given.



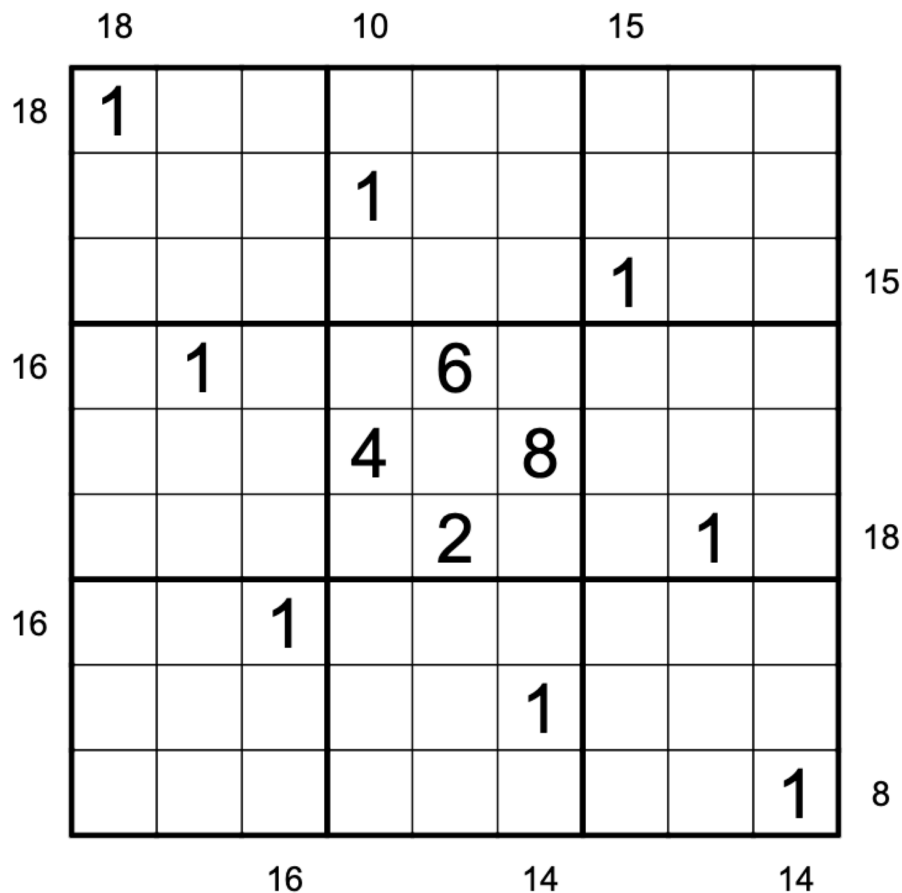
Play on f-puzzles: <https://f-puzzles.com/?id=2eaopcbz>
Play on CTC App: <https://tinyurl.com/cfmajacc>

May 16, 2023: Math(s)-ier Sudoku
 clover!

Ahhh. Nothing quite like a little light arithmetic in the morning to knock the rust off the ol' brain cells. I know that's a key part of my morning routine - shower, stretch, brush my teeth, set a puzzle, put on sunscreen, do a little bit of math. ☀️

In today's **math(s)ier sudoku**, you might recognize the rules from a few weeks back! Be careful, because this one is slightly different.

Normal sudoku rules apply. Also, clues **to the left or right of a row** tell you the **sum** of the three digits in that row nearest the clue. Clues **above or below a column** tell you the **product** (multiplication) of the three digits in that column nearest the clue. For example, if a "8" appears above a column, the three topmost digits in that column would be 1, 2, and 4 in some order.



f-puzzles: <https://f-puzzles.com/?id=2lf5vc2s>
 CtC: <https://tinyurl.com/yc5875mz>

May 17, 2023: Free Yourself
Bill Murphy

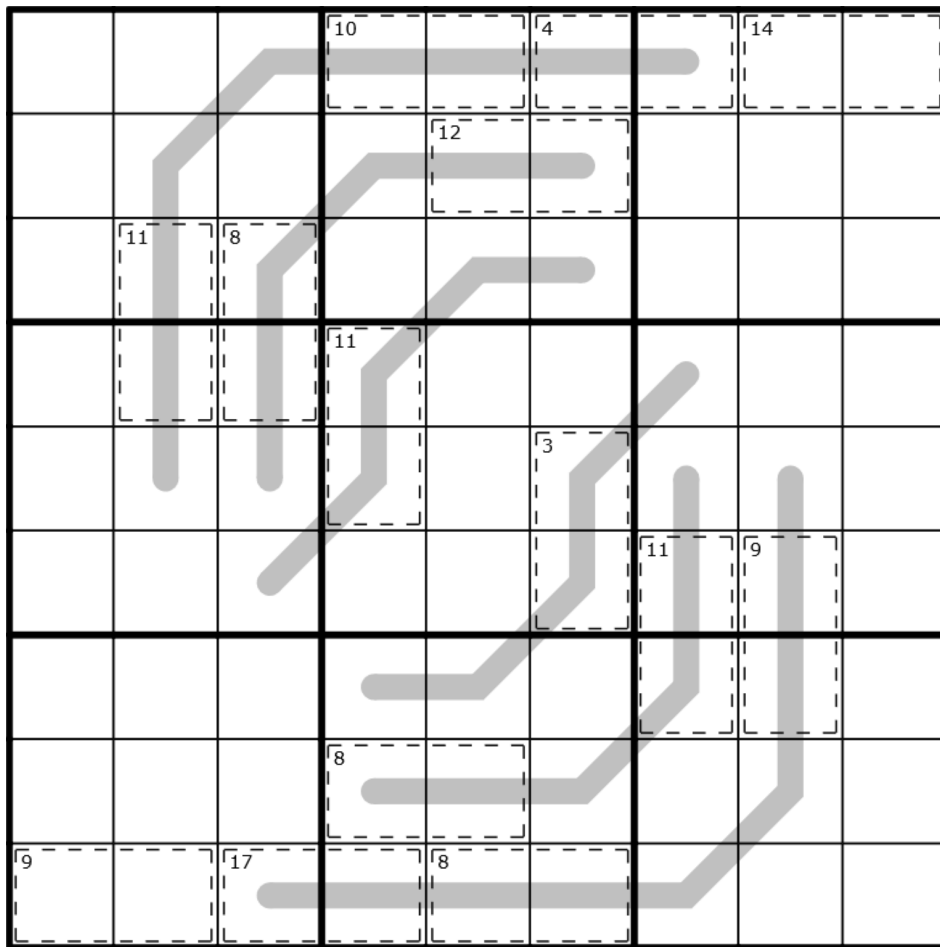
Happy IDAHOBIT (International Day Against Homophobia, Biphobia and Transphobia) to all my queer, trans and non-binary friends!

I'd a hobit once, but i had to let them free in the wild, they kept eating all my breakfasts.

Today's GAS is a **killer palindrome** sudoku.

Normal sudoku rules apply. Digits in cages must sum to the small corner total. Grey lines are palindromes and must read the same from either direction.

For two party hats, finish within 7:30. For one party hat, finish within 14:00. All other solvers will earn a Inclusive Incisivosaurus.



f-puzzles: <https://f-puzzles.com/?id=2bdw9kfe>
CTC: <https://tinyurl.com/4fyptfcm>

May 18, 2023: Tiers of the Kingdom

Philip Newman

BWAHAHAHA HA HA. It is I, eeeeeevil setter NILIP PHEWMAN! Philip is busy this morning enacting delicious sudoku-themed vengeance on the phone support for his home warranty (or something along those lines) and has deputized me to post his beautiful puzzle. I'm sure he isn't cackling right now at the realization that I now have to type up all of these rules...*deep breath*

(note: in case you have trouble distinguishing the three line constraints, from top to bottom they're renban, then GW, then region sum lines!)

Normal sudoku rules apply.

Kropki Pairs: Digits separated by a white dot are consecutive. Digits separated by a black dot are in a 1:2 ratio. Not all possible dots are necessarily given.

Thermo: digits along thermometers must increase, starting from the round bulb.

Renban: the magenta line contains a set of consecutive digits in any order, such as 2 3 1 4.

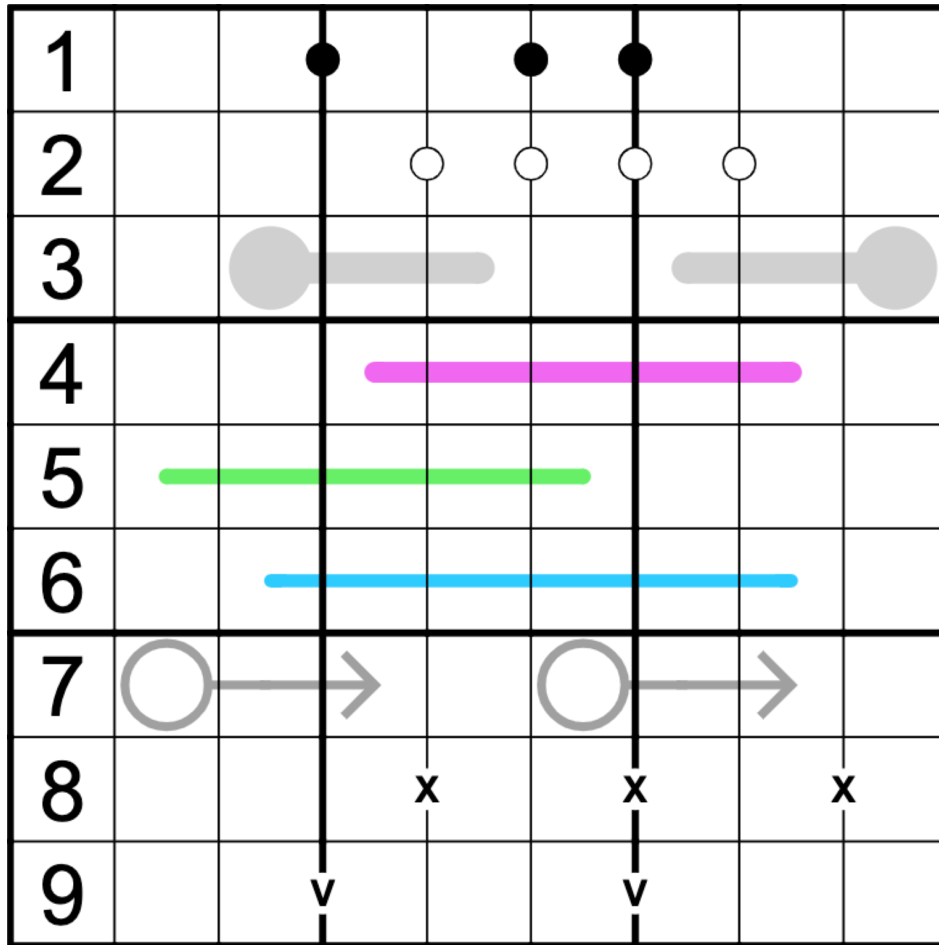
German Whispers: adjacent digits along the green line differ by at least 5.

Region sum line: the blue line travels through several regions in the grid. The sum of the digits along the line is the same within each region it passes through.

Arrow: digits along each arrow sum to the digit in the attached circle.

XV pairs: digits separated by an X sum to 10. Digits separated by a V sum to 5. Not all possible Xs or Vs are necessarily given.

↓↓ ↓↓ (The puzzle is on the next page) ↓↓ ↓↓



(the two-party-hat-time is not including the time it takes you to read those rules. Is that too generous? Does it give away the fact that I'm not really Philip? Who cares!)

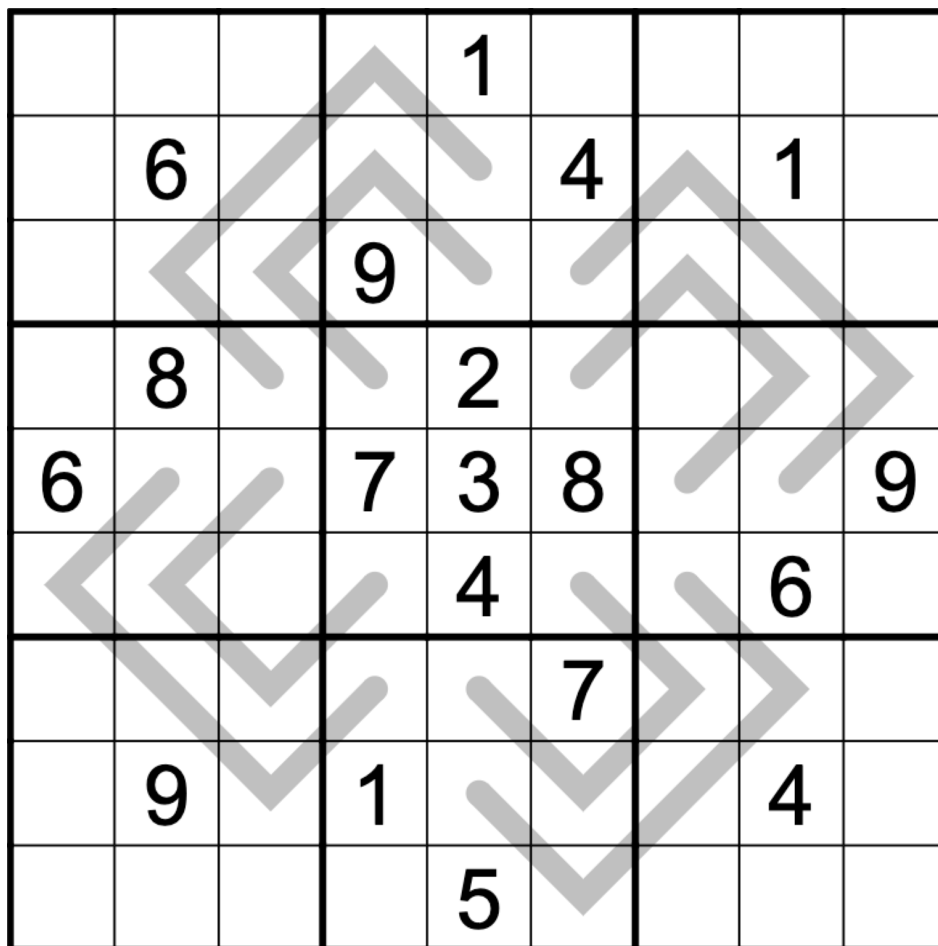
f-puzzles: <https://f-puzzles.com/?id=2gu9vI34>
 CtC: <https://tinyurl.com/3dtmszpb>

(posted by clover!)

May 19, 2023: Palindrome
clover!

There once was a solver of puzz
whose brain was all stuffed full of fuzz
Until yesterday's GAS
she'd been top of her class
but forgot what fifteen plus two wuzz.

Today's GAS is a kind and gentle **palindrome sudoku**. Normal sudoku rules apply. Also, the digits along each gray line form a palindrome (read the same in both directions).



f-puzzles: <https://f-puzzles.com/?id=2lfjklyh>
CtC: <https://tinyurl.com/2p87yhad>

May 20, 2023: So You Kno
Bill Murphy

Today's GAS is a **classic sudoku** I made to impress someone in the flirty sense. This is how I date now apparently. Life is weird like that sometimes.

For two party hats, finish in 5:30 or less. For one party hat, finish in 10:30. All other solvers will earn a romantic Rinchenia.

7		9		8		4		6
	1		7		4		3	
6		4		5		8		2
3		7		6		1		9
	2		3		8		4	
4		1		7		5		3

f-puzzles: <https://f-puzzles.com/?id=2hxgnqt3>
CTC: <https://tinyurl.com/5n7rzpad>

May 21, 2023: 129 Wingman
Philip Newman

As @Bill Murphy's GAS wingman, it falls on me to provide sudoku pickup lines guaranteed to succeed.

"I'm so sorry... I wanted to make a sudoku inspired by you, but I failed."

"Oh no, what happened?" (or "Do I know you?" or "Not this again..." or "Sir, this is a Wendy's")

"I can only place the digits from 1 to 9, and you're a 10."

Today's **GAS** is another **Classic Sudoku!**

Normal sudoku rules apply. And that's it!

		1		2				3
			4		5		6	
				7		8		9
			1		2		3	
4				5				6
	7		8		9			
1		2		3				
	4		5		6			
7				8		9		

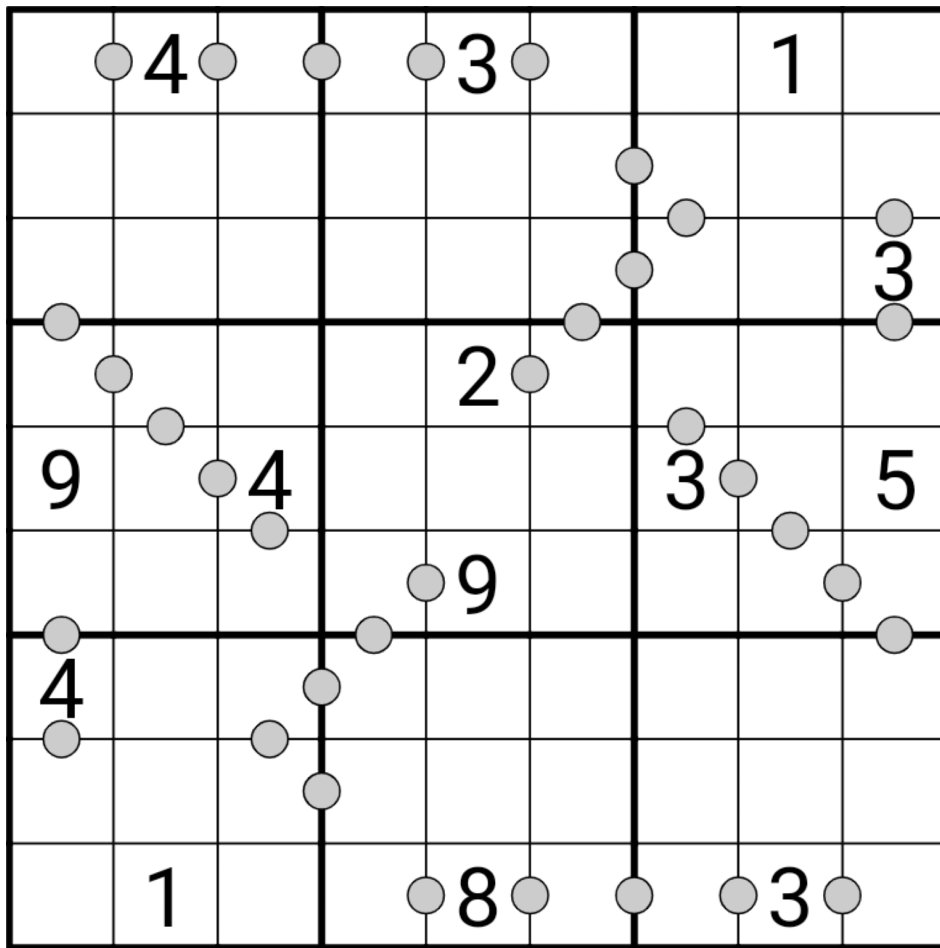
Play on f-puzzles: <https://f-puzzles.com/?id=2me56xt6>
Play on CTC App: <https://tinyurl.com/ysdyce2y>

May 22, 2023: Multiple Sudoku
clover!

To celebrate today's **multiple sudoku**, let's have a poll: what do you call multiple sudoku(s)?

- ① the plural is sudoku, like moose, fish, or sheep
- ② the plural is sudokus, like cats, emus, or parrots
- ③ the plural is something else entirely, like octopi, mice, or children

Normal sudoku rules apply. Also, if two digits are separated by a gray dot, then one of the digits is a multiple of the other (such as 4 and 1, or 6 and 2).



CtC: <https://tinyurl.com/4e5dnau6>

May 23, 2023: Nine Pins Sudoku

Bill Murphy

Sorry. But also, as Luckyluciano17 posted on that fateful day on September 2nd 2014, *You know I had to do it to em.* (Don't worry Mark, it's an internet joke.)

Today's GAS is a **Nine Pins Sudoku**, dedicated to everyone who's been personally victimised by the World Sudoku Championship Instruction Booklet example puzzle for Nine Pins Sudoku. This one's for you.

Normal Sudoku Rules Apply. Each number from 1-9 must appear three times in a row along a diagonal in this puzzle.

Attached to today's puzzle is a spoiled image containing a pen-tool drawing of all the potential diagonals which could fulfil that condition, which could help with visualising it before you start. You can look at it if you want but are not obliged to (I've also included that as a link if you'd like to solve using that pattern if you don't want to take the time drawing it yourself). [this image and the links are on the Hints Page in this GAS Leak]

4								5
	9							
		1	2		6	8		
		3	4	2	5	7		
			3		7			
		7	8	6	1	3		
		5	6		4	9		
							4	
8								1

Plain:

F-puzzles: <https://f-puzzles.com/?id=2fxo6mkr>

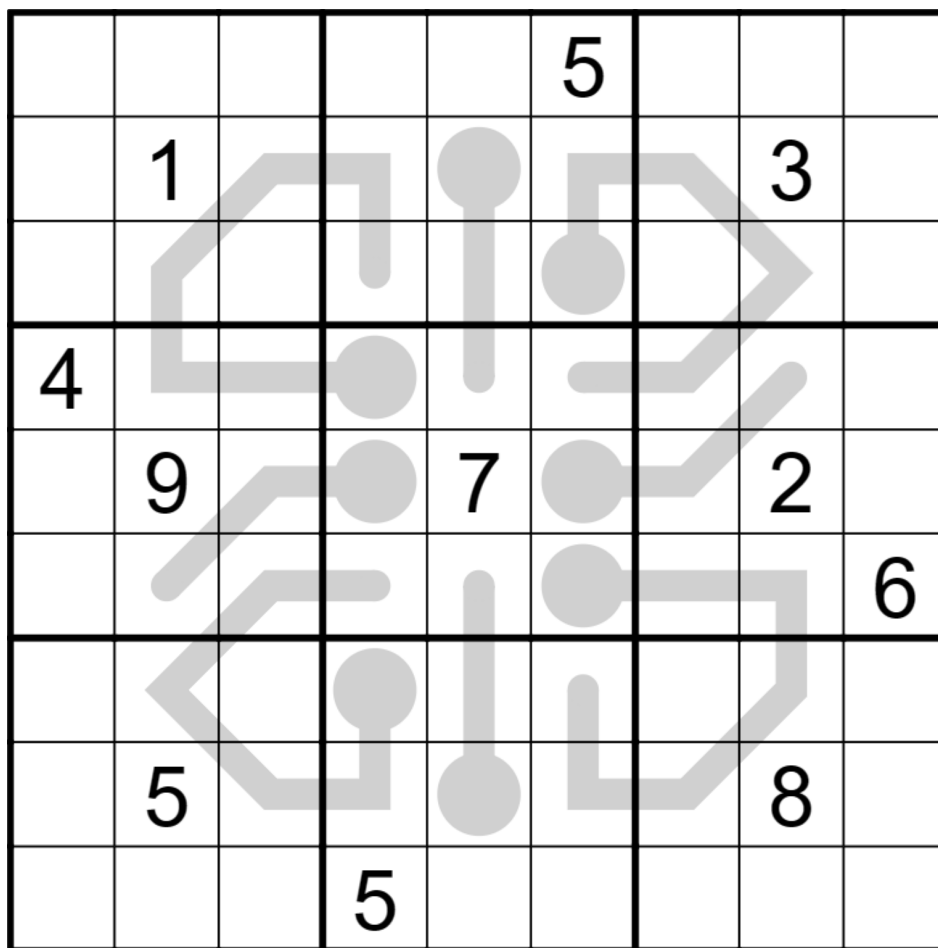
CTC: <https://tinyurl.com/5n6juawb>

May 24, 2023: Thermoglyphs
Philip Newman

Today's **GAS**, a **Thermo Sudoku**, is dedicated to Texas in May. 🇺🇸.

Normal sudoku rules apply.

Thermo: Digits along thermometers must strictly increase from bulb to tip.



Play on f-puzzles: <https://f-puzzles.com/?id=2lk56tgh>
Play on CTC App: <https://tinyurl.com/mr2ez7kb>

May 25, 2023: Renban Sudoku
 clover!

Today's GAS is a **renban sudoku**. If you squint, it spells out װװװװװװװװװװ, which, when translated from the original Klingon, means:

Normal sudoku rules apply. Also, each line contains a set of consecutive digits in any order, such as 423 or 798.

		9	└─┘	1		6		
	3	└─┘	└─┘			└─┘	4	
8	└─┘					└─┘		5
						└─┘	└─┘	
2	└─┘	└─┘						1
	└─┘	└─┘						
5	└─┘					└─┘		2
	6	└─┘		└─┘		└─┘	7	
		4		2	└─┘	1		

f-puzzles: <https://f-puzzles.com/?id=2lgzhvqh>
 CtC: <https://tinyurl.com/yy45uzeb>

May 26, 2023: Legal Ghost
 Bill Murphy

Sorry, I don't really have anything interesting to say today. Some may say that's **Irregular**, but they can't all be winners.

Place the digits 1-9 in each row, column and outlined region. (Cells highlighted the same colour share a region.)

For two party hats, finish with 6:30 or less. For one party hat, finish within 12:00 or less. All other solvers will earn a ill-fitting Irritator.

1	2	3						
		4						
6								
	3		6		1			
		1				9		
			4		9		3	
								2
						5		
						6	7	8

f-puzzles: <https://f-puzzles.com/?id=2lbzb8ev>
 CTC: <https://tinyurl.com/yckskurw>

May 27, 2023: Stare Into The Noid
Philip Newman

Today's **GAS** is a **Killer Sudoku**!

The title is a reference to a Domino's Pizza advertising character which, according to Wikipedia, "was a physical manifestation of all the challenges inherent in getting a pizza delivered in 30 minutes or less". I am co-opting this character to represent the physical manifestation of all the challenges inherent in me posting a GAS puzzle on time.

Normal sudoku rules apply.



Killer: Digits in cages cannot repeat and must sum to the total given.

		7	8				4	
3					13			
	16	6				7	6	
			14				8	
					10			
8		7					14	
6					6			
	4	15			8	7	3	

Play on f-puzzles: <https://f-puzzles.com/?id=2eqnncb5>
Play on CTC App: <https://tinyurl.com/4pyh6fx3>

May 28, 2023: Diagonal Consecutive Sudoku
 clover!

The slight delay in posting today's GAS was in no way related to my staying up until 3 AM perfecting my Zonai racecar design in Tears of the Kingdom.

Normal sudoku rules apply. Also, marked pairs of diagonally adjacent digits are consecutive.  **NEGATIVE CONSTRAINT ALERT**  : all possible pairs are marked. If two diagonally adjacent digits are NOT marked, then those digits are NOT consecutive.

	5						2	
1	3		8		9		4	6
				6				
		3				7		
				9				
4	6		1		2		7	9
	8						5	

CtC: <https://tinyurl.com/mw2p62d7>

May 29, 2023: Add It Up

Bill Murphy

A man, obsessed with trains steals one and immediately crashes it, killing several people.

At the trial, the man is found guilty of multiple murders and is sentenced to death. He is offered a last meal, and asks for a single banana, which is given to him. The next day, he is led to the electric chair. They strap him in, pull the switch, and... nothing happens.

This has never happened. Since you cannot punish a person twice for the same crime, the court is forced to let him go free.

Naturally, the man, who is obsessed with trains, goes and steals another one. He doesn't care that he can't drive it or that he failed catastrophically before; he is obsessed with trains and his only desire is to operate one. As before, he crashes it, and kills several people. Again, he stands trial, and again, he is sentenced to death, showing no remorse, only delight that he got to operate the train.

His last meal request is again a single banana.

When he goes to the chair, the executioner pulls the switch, but nothing happens. As before, he goes free again.

Once more on the loose, he wastes no time in hijacking a train and crashes it.

His trial is swift, as this has already happened twice, and he is again sentenced to death. They ask him what he would like for his last meal.

"A single banana," he says.

"Oh, no you don't! We're on to you! We know all about your banana trick, and you're not escaping this time!"

The next morning they strap him into the electric chair, pull the switch, and... nothing happens.

"Did you give him the banana?" demands the head guard. The guards shake their heads.

↓↓ ↓↓ (The puzzle is on the next page) ↓↓ ↓↓

Clone Sudoku today!

Normal sudoku rules apply. Identical areas made up of identically coloured cells are clones. Cloned areas must be identical.

1	2					4	5
3						9	6
			2				
			8	7			
			9				
8	6						4
9	4					1	7

f-puzzles: <https://f-puzzles.com/?id=2fnply8!>

CTC: <https://tinyurl.com/55rdxvn7>

[Tip: Have a look at the end message after solving!]

May 30, 2023: bakpao Approved
Philip Newman

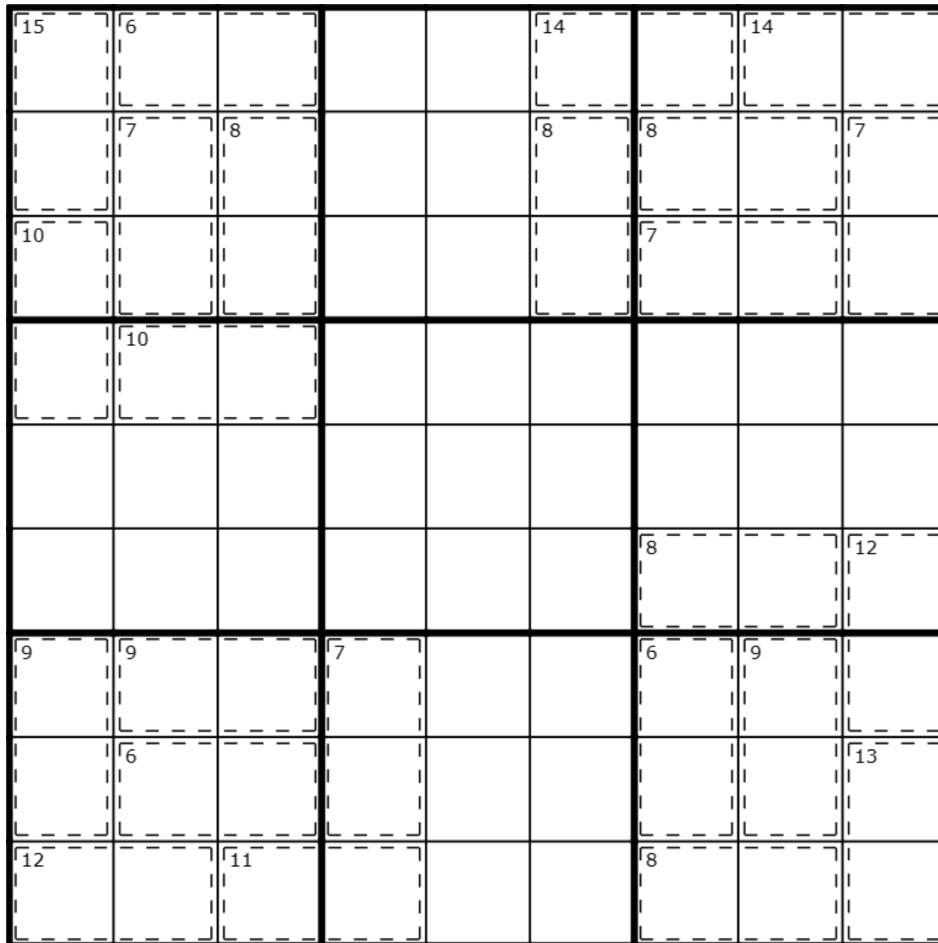
In order to thank you for your valiant efforts to Avoid The Noid on Saturday and solve the puzzle in 30 minutes or less, @bakpao (Lord of the Puzzles, Keeper of the Mines, Slowest of His Name) has decided to treat us to pizza! 🍕 We have four extra large pizzas (bursting out of their boxes), sliced up nicely into rectangles. But it looks like you'll have to add your own digital toppings...

Today's **GAS** is a **Killer Sudoku**! Again!

Normal sudoku rules apply.

Killer: Digits in cages cannot repeat and must sum to the total given.

If this is a bit trickier than normal GAS, blame bakpao, he said it's fine. Here are a couple GAS 101 hints if you're stuck: [The hints are on a separate Hints page]



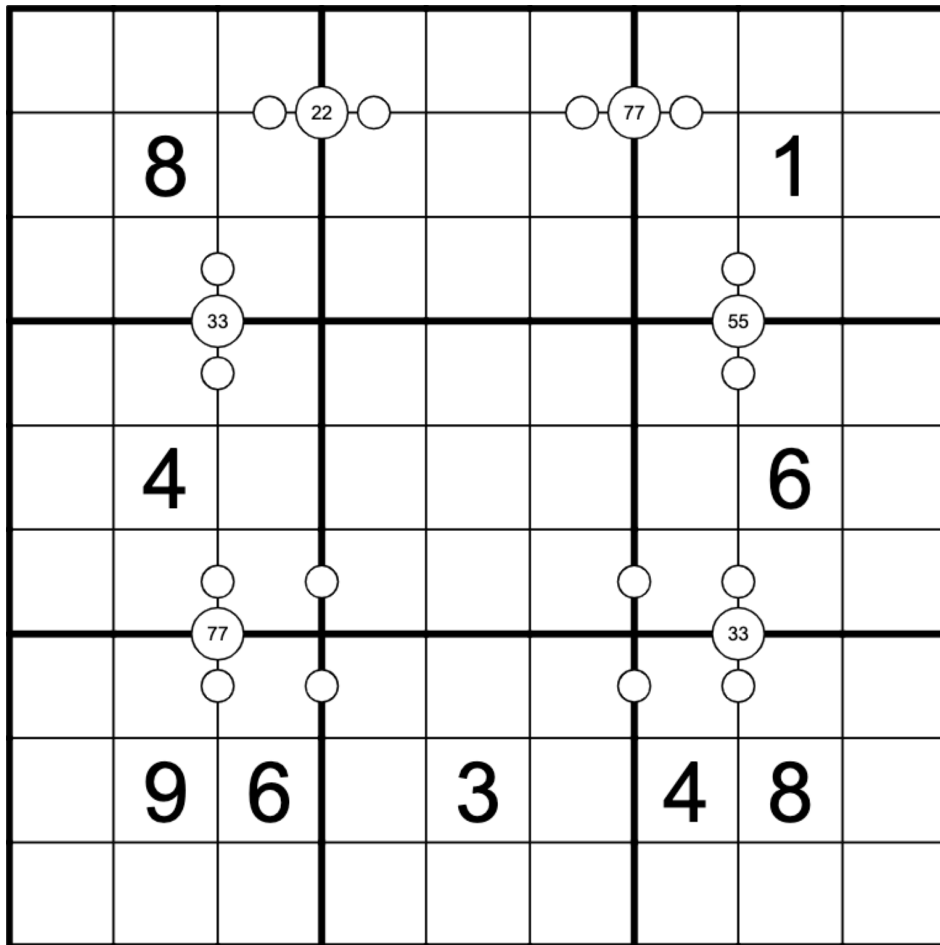
Play on f-puzzles: <https://f-puzzles.com/?id=2nxb3wcy>

Play on CTC App: <https://tinyurl.com/3j4k8xef>

May 31, 2023: Consec Pairs Quads
clover!

Pareidolia is the phenomenon by which we sometimes perceive images - often, human faces - in meaningless stimulus, such as clouds, the moon, and sudoku puzzles. If you see the image of a vaguely menacing robot in today's puzzle, it probably has nothing to do with the vaguely menacing robot watching you solve it from behind the screen...
waiting...

Normal sudoku rules apply. Also, digits in large white circles must appear somewhere in the four cells immediately surrounding that circle. (When a digit appears twice in a white circle, it must appear at least twice in the surrounding cells.) Digits separated by small white dots are consecutive. Not all possible dots are necessarily given.



f-puzzles: <https://f-puzzles.com/?id=2kw2skdv>
CtC: <https://tinyurl.com/393vzv6u>

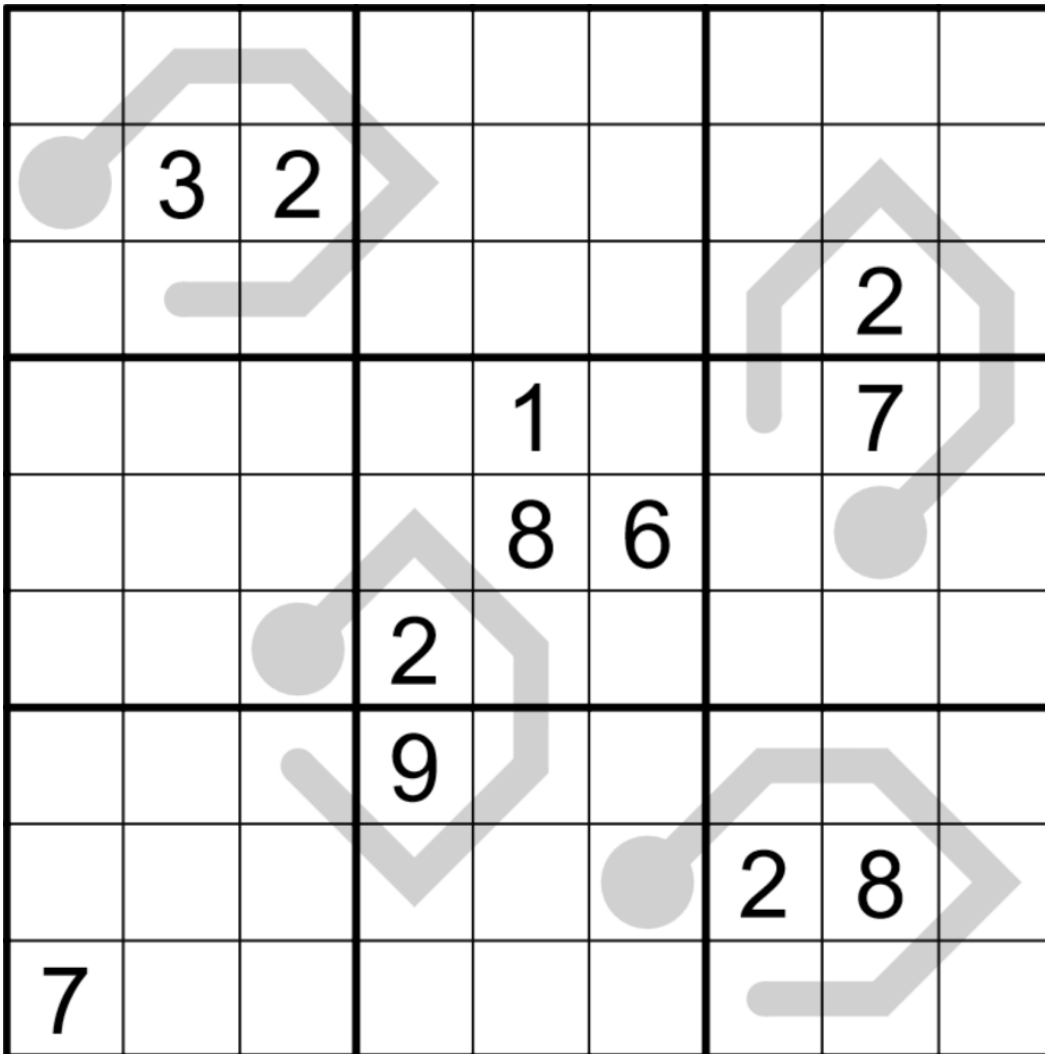
Bonus 1: Thermomegranates

Bill Murphy

Normal sudoku rules apply. Lemon sudoku and thermo sudoku rules also apply, as described below:

Lemon: the digits around each lemon shape sum to the 2-digit number formed by reading the 2 cells "inside" the lemon from left to right or top to bottom. For instance, the digits on the top left thermo sum to 32.

Thermo: digits along each thermometer must increase, starting from the round bulb.



<https://f-puzzles.com/?id=2pbwsqxo>
<https://tinyurl.com/2mxsyhud>

Bonus 2: Japanese Sums Sudoku

Clover

Normal sudoku rules apply. Also, color some of the cells in the grid in blue, red, or gray. Colored clues outside of the grid give the sums of the digits in contiguous runs of cells of that color, **in order from top to bottom or left to right**. All possible clues are given. Runs of the same color must be separated by at least one cell. Runs of different colors may be immediately adjacent to each other.

For example, the topmost run of blue cells in column 1 sums to 11, then there is a gap of at least one cell, then the next run of blue cells in column 1 sums to 2. There are no red or gray cells in column 1.

(puzzle and links appear on the following page)

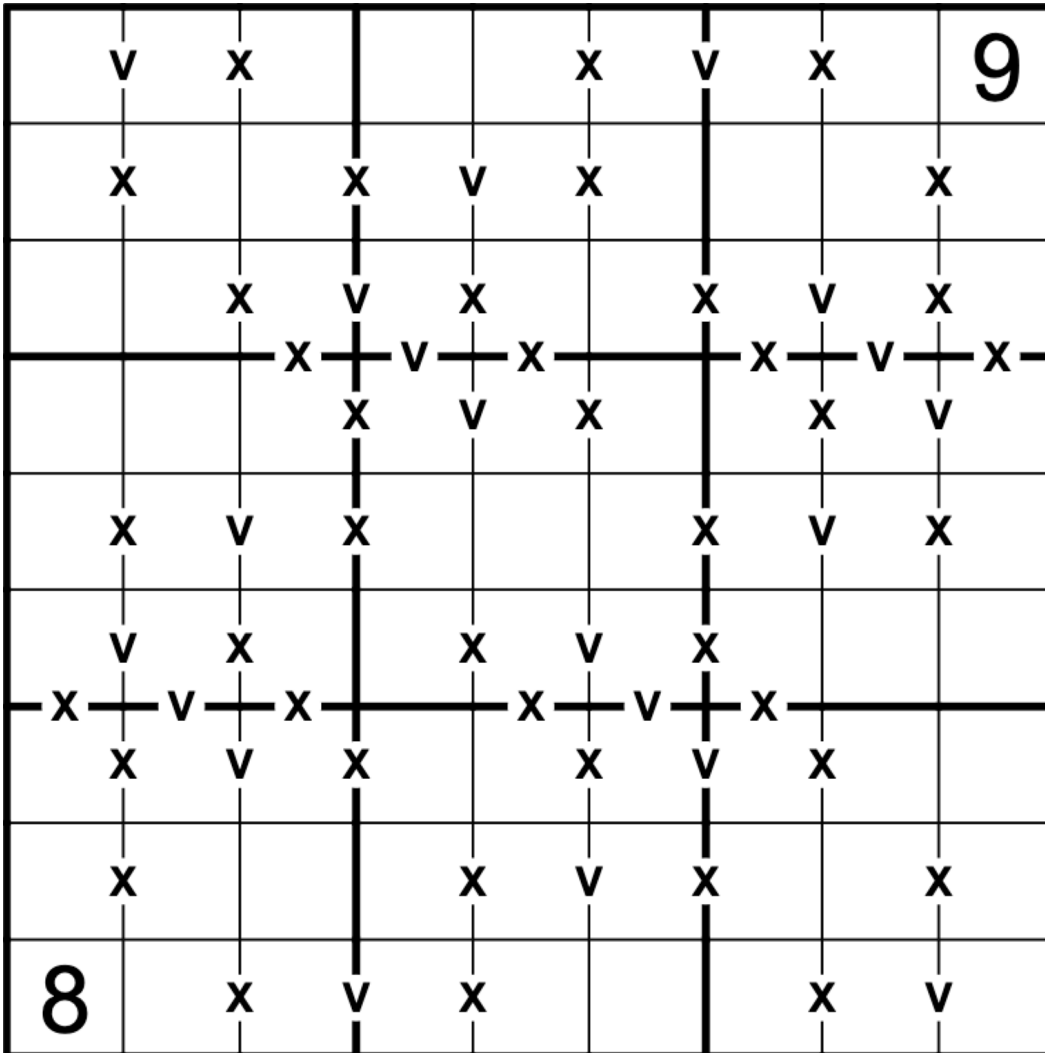
			2					5		
	11	8			6		14	9	9	
	2	6	35	15	3	25	2	1	21	
10			5		8		7			
1	6									
24	15		9				3			
8	1	5								
15	15	15	2		7		3		1	9
2	6	8								
3	2	22			1				5	
7										
9			3		5		2			

<https://tinyurl.com/2nyg7c3k> (Penpa)
<https://tinyurl.com/mryjkm2y> (CtC)

Bonus 3: XV Pairs Sudoku

Philip Newman

Normal sudoku rules apply. Digits separated by an X sum to 10. Digits separated by a V sum to 5. Not all possible Xs or Vs are necessarily given.



<https://f-puzzles.com/?id=2qqz9eyk>

<https://tinyurl.com/2p825ytf>

Bonus 4: Killer Sudoku

Bill Murphy

Normal sudoku rules apply. Digits in cages do not repeat and must sum to the indicated totals.

6		14						
	15							
12		23			11			
						8		
		11			15			18
	13		9					
				7			15	
								24
				16				

<https://f-puzzles.com/?id=2pfcn6s5>

<https://tinyurl.com/nh9p79dp>

Bonus 5: Round Off Sudoku

Clover

Normal sudoku rules apply. Digits in cages should be read as 2-digit numbers from left to right. The clue in each cage tells you the resulting value when the cage number is rounded to the nearest 10. Numbers ending in 1, 2, 3, or 4 are rounded down; numbers ending in 5, 6, 7, 8, or 9 are rounded up.

6	<small>10</small>			<small>50</small>				
	8	<small>50</small>			<small>70</small>			
<small>20</small>		7	<small>40</small>			<small>70</small>		
	<small>20</small>		7	<small>30</small>			<small>70</small>	
		<small>30</small>		9	<small>50</small>			
<small>60</small>			<small>60</small>		8	<small>30</small>		
	<small>100</small>			<small>40</small>		8	<small>10</small>	
		<small>20</small>			<small>60</small>		7	
			<small>100</small>			<small>50</small>		6

<https://f-puzzles.com/?id=2mbypp2s>
<https://tinyurl.com/3nnbt963>

Time Benchmarks



Two party hats



One party hat



Today's dinosaur:

May 1, 2023	08:00	15:00	delicious Dystrophaeus
May 2, 2023	06:30	5 years	Oaken Omeisaurus
May 3, 2023	06:00	12:00	Hurricane-force Hamititan
May 4, 2023	07:00	13:00	blubbering Brontomerus
May 5, 2023	09:00	00:16	May Mei
May 6, 2023	05:00	12:00	Touchy Traukutitan
May 7, 2023	08:00	15:00	peachy-keen Piveteausaurus
May 8, 2023	08:00	00:16	Silly Spinophorosaurus
May 9, 2023	07:00	15:00	Bravasaurus Bobblehead
May 10, 2023	06:30	12:00	emblazoned Echinodon
May 11, 2023	06:00	11:00	ill Irritator
May 12, 2023	06:00	00:12	Zonai Zizhongosaurus
May 13, 2023	08:00	15:00	unusual Unescoceratops
May 14, 2023	09:30	18:00	Ptimely Pterodactyl
May 15, 2023	08:00	20:00	Tearful Tataouinea
May 16, 2023	00:07	13:00	healthful Hesperonychus
May 17, 2023	07:30	00:14	Inclusive Incisivosaurus
May 18, 2023	10:00	20:00	alter-ego Ampelosaurus
May 19, 2023	06:00	11:00	questionable-scansion Quilmesaurus
May 20, 2023	05:30	10:30	romantic Rinchenia
May 21, 2023	06:30	13:00	Suave Suuwassea
May 22, 2023	06:30	12:00	multiple mussaurus
May 23, 2023	07:30	16:00	Montanoceratops
May 24, 2023	06:30	13:00	Fiery Fushanosaurus
May 25, 2023	07:30	14:00	lost-in-translation Leonerasaurus
May 26, 2023	06:30	12:00	ill-fitting Irritator
May 27, 2023	07:00	13:00	Pepperoni Pellegrinisaurus
May 28, 2023	07:30	13:30	sleepy Serendipaceratops
May 29, 2023	07:00	13:00	recalcitrant Rhinorex
		30:00	
May 30, 2023	08:00	or money back	Dashanpusaurus Delivery
May 31, 2023	06:30	12:00	psychological Seitaad

Hints

Hint for May 3, 2023

It has two solutions without givens.

Hints for May 23, 2023:

4								5
	9							
		1	2		6	8		
		3	4	2	5	7		
			3		7			
		7	8	6	1	3		
		5	6		4	9		
							4	
8								1

Striped:

F-puzzles: <https://f-puzzles.com/?id=2he9tu96>

CTC: <https://tinyurl.com/z762j842>

Hint for May 30, 2023:

1. Each of the four corner boxes has four cages covering eight cells; use The Secret to determine the digit in the ninth cell!
2. Whenever you determine the composition of a cage, check how it affects the other cages it sees in its box, row, or column. For example, after you have determined the digits in the 6 cage in row 1, what possibility is left for the 7 in box 1?