

GAS Leak

Genuinely Approachable Sudoku from the CtC Discord

Volume 19:

The Alphabet Edition (August 1 - 26, 2022)



On August 1, 2022, a mysterious message appeared in the GAS puzzles channel...

Welcome to the month of August! This month, we have an intriguing metagame for you here in GAS. The rules are simple: for all of August, correctly guess the sudoku variant we'll post on the following day, and win a bonus cowboy hat. 🤠 Please spoiler tag your guesses!


How? Well, feel free to use any means at your disposal. Maybe check in and see if GAPP has any ideas? Please don't kidnap Sam, though, he's had enough kidnappings for one lifetime. 🐱

The month has now come to an end, and the jig is up. For the first 26 days of August, we posted sudoku variants in alphabetical order, one day per letter. Catching on to this pattern didn't guarantee you a correct guess for the following day - after all, both of my favorite variants start with K! - but it did earn our solvers quite the trove of party hats as the month carried on. In this edition of GAS Leak, you'll find those 26 puzzles, plus a handful that didn't make the cut - along with a few of my favorite guesses from solvers throughout the month. (Important note: the last five days of August, which rounded out the month with some excellent sudoku provided by the GAPP team, will appear in the next edition of GAS Leak.) Enjoy!

Clover

August 1, 2022: Around and Around

Philip Newman

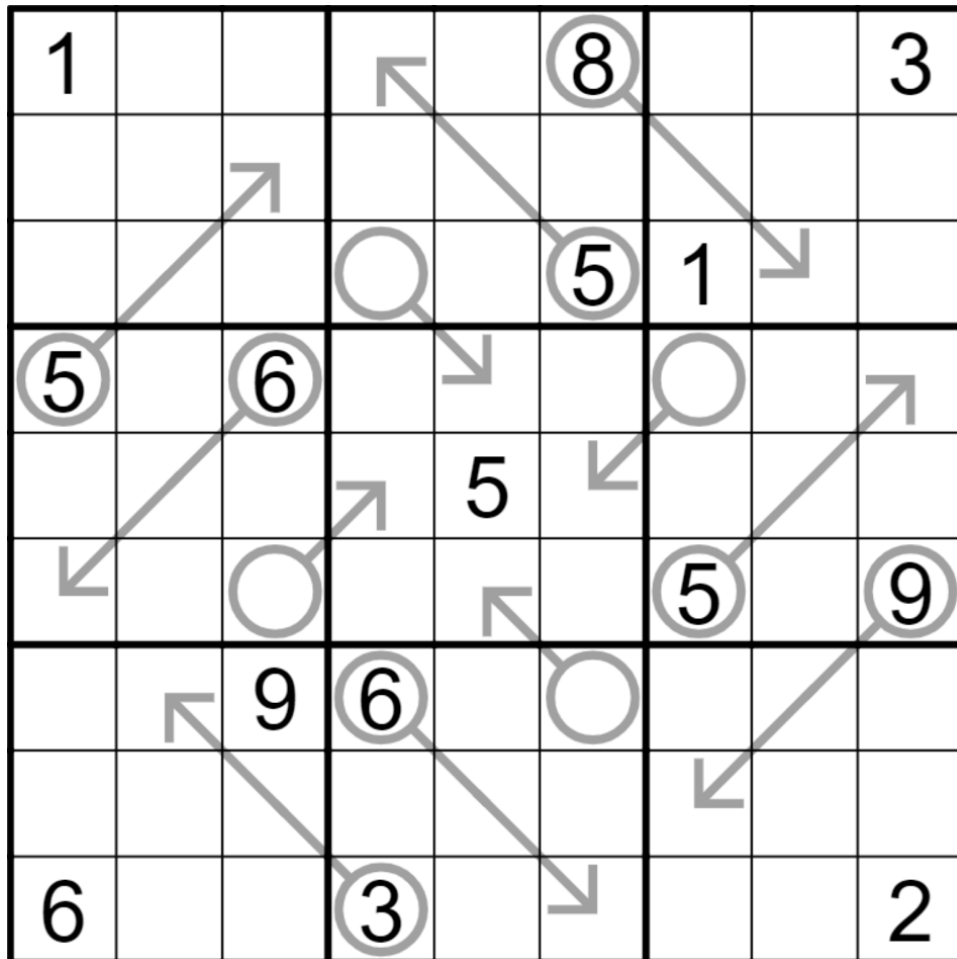
 *A to the Double R O Double U*

Makin' up bars just ain't what I am good at in the slightest so I'm going to stop and leave that to shy

(This intro is a reference to shy's Araf rap in the [August 1, 2022 GAPP](#).)

Today's GAS is an Arrow Sudoku!

Normal sudoku rules apply. Digits on arrows must sum to the circled total.



Play on f-puzzles: <https://f-puzzles.com/?id=26pjo3b6>

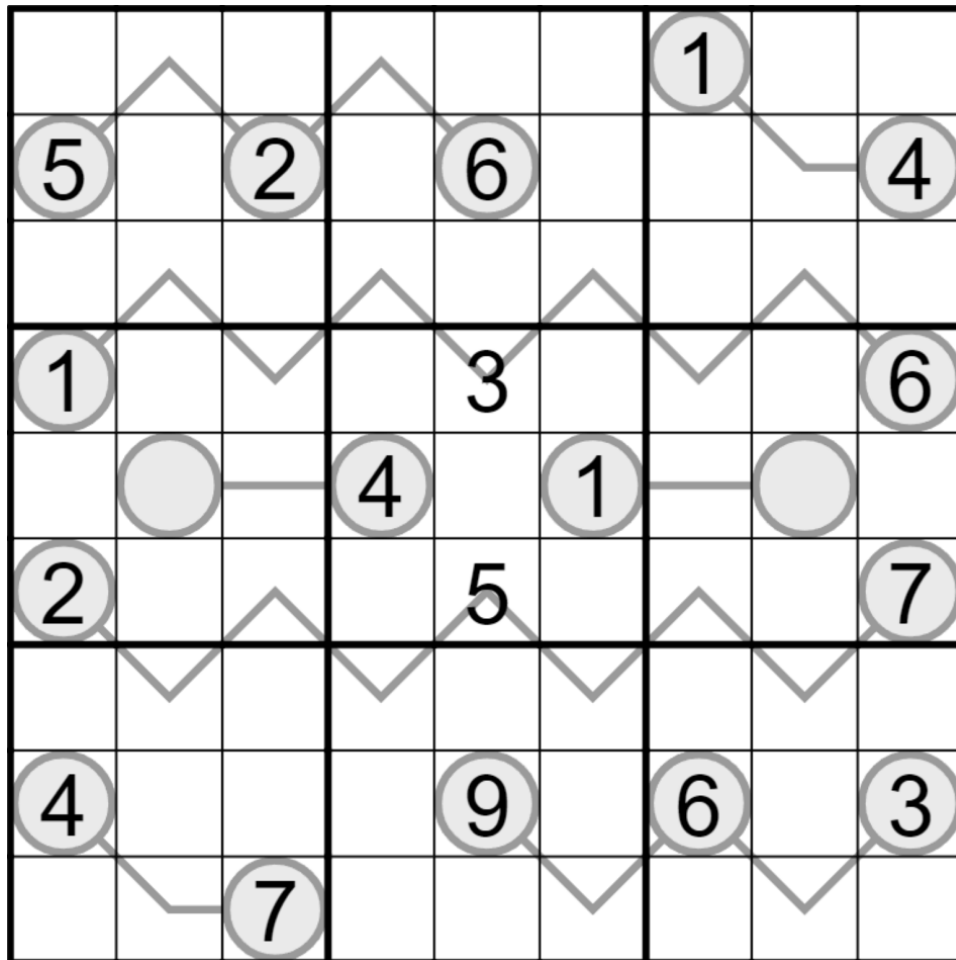
Play on CTC App: <https://tinyurl.com/5yrp5eth>

August 2, 2022: Between Lines

Clover

Good morning, and a very special congratulations to the nine savvy sudoku solvers who correctly guessed today's variant: @Karen Carpenter , @C-chan , @Truth And Her , @TheBroo , @ariane , @Serrif | 55 🎩 | 230 🤪 | 92 🦎 , @StefanW , @VickyP , and @JonBob (52 🐱 97 🐼) were hoping for a between lines sudoku and that's exactly what they're going to get! Bonus hats for the lot of ya. 🧑🏻 For everybody else, why not redeem yourself and correctly guess tomorrow's variant? 🐱

Normal sudoku rules apply. Also, digits along a line must be in between the digits in the circles on the ends of the line. Digits can repeat on a line and don't have to be in any particular order. Not every possible digit has to appear on a line: for instance, if the circles contain 2 and 7, the line could consist of 3, 4, and 6.



f-puzzles: <https://f-puzzles.com/?id=23buk25n>

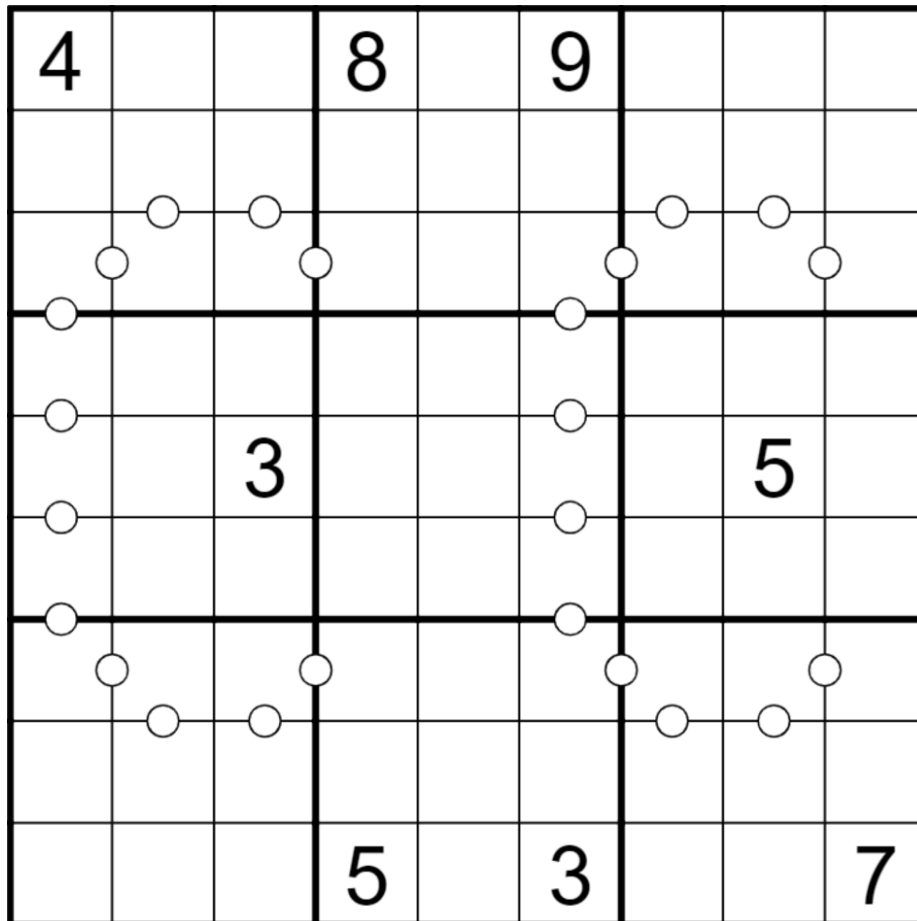
CtC: <https://tinyurl.com/3w7w6n7u>

August 3, 2022: Consecutive Pairs

Sam Cappleman-Lynes

After yesterday's bonus-hat bonanza, in which 9 beautiful bonnets were bestowed upon those who correctly guessed Between Lines, today I'm afraid there is only one cowboy cap being conferred upon the character who correctly conjectured that today's puzzle would be a Consecutive Pairs Sudoku - @ariane, enjoy this hat! 🤠 Everyone else - better luck next time! (To those of you who guessed Kropki Pairs for today, I'm sorry, but after extensive consultation with myself, it has been decided that your guess does not qualify as correct)

In this puzzle, normal Sudoku rules apply. In addition, if two cells are separated by a white dot, then they must contain consecutive numbers. A pair of cells without any marking may or may not contain consecutive numbers.



f-puzzles - <https://f-puzzles.com/?id=22hhad2y>

CtC - <https://tinyurl.com/2f8tts6f>

August 4, 2022: Diagon Dillydally

Philip Newman

First off, let's doff our cowboy hats to everyone who guessed today's variant!

@Leseesen 🐘, @Illuminator23 (25 🧠 42 🦀 16 🐦), @Panthera (panthchesh on LMD), @sararielle-x8A 🦎 E2 🧡 5B 🎩 26 🧑 13 🧠 2C 🦀 6 🐦, @Jordyn, @Walker, @C-chan, @StKildaFan, @Peppermallow, @Grimmag (114 🧡 191 🎩 11 🦎 3 🧑), and @RegalSentinel - take a bow 🙇! This is the most correct guesses so far... I'm sure that's just a coincidence.

Today's GAS is a Diagonal Sudoku! Don't dawdle (unless you desire dinosaurs)!

Normal sudoku rules apply. Digits along the indicated diagonals cannot repeat.

					1	8		
				2				1
				1				5
			2		3	4		
	5	4		9				
6			5				3	4
5			7			6		1
	8	7				5	2	

Play on f-puzzles: <https://f-puzzles.com/?id=27vak85d>

Play on CTC App: <https://tinyurl.com/4sn5a7ac>

August 5, 2022: Expanded Sudoku

Clover

Six especially erudite enthusiasts expected an expanded sudoku for today's GAS: bonus hats all around for @Sedho , @SMmarcus100 (83 🎩 178 🎉 42 🦎 14 🧐) , @sararielle-x8A 🦎 E2 🎉 5B 🎩 26 🧐 13 🧐 2C 🦎 6 🐦 , @C-chan , @Jordyn, and @Leseesen 🦎 ! 🧐 How did they do it? Maybe they all have E-S-P...?

Normal sudoku rules apply, except that rows and columns continue across blank spaces. For instance, all 9 cells in the 5th row can see each other, despite the blank spaces in the middle.

								3
	4	5	8	6	2			
	8				4			
	6					3	4	5
	7							6
	2	1						7
			1					4
			3					6
			5	7	9			5
								2
						2		8
						9	5	8
						2	4	
2								

Penpa: <https://tinyurl.com/2887g7oo>

August 6, 2022: Fortress

Sam Cappleman-Lynes

Due to a combination of 1) me being on mobile 2) not being able to unspoiler messages on mobile from the search results page without jumping to the message and 3) jumping to messages being irredeemably broken on mobile I'm afraid I will not be individually naming all of the 30+ (!) people who correctly guessed Fortress Sudoku for today. You know who you are - enjoy your bonus hats! I wonder how so many of you got it right 🤔

In today's puzzle, normal Sudoku rules apply. In addition, wherever a shaded cell and an unshaded cell are adjacent, the shaded cell must contain the higher number.

			8	3	2			
		^	^	^	^	^		
	6	<	>				9	
	5	<	>				8	
	7	<	3	6	9	>	4	
	3	<	>				6	
	8	<	>				7	
		<	>					
		^	7	8	5			

f-puzzles - <https://f-puzzles.com/?id=2xq6re7e>

CtC - <https://tinyurl.com/2p9xtt2e>

August 7, 2022: Germane Gossip

Philip Newman

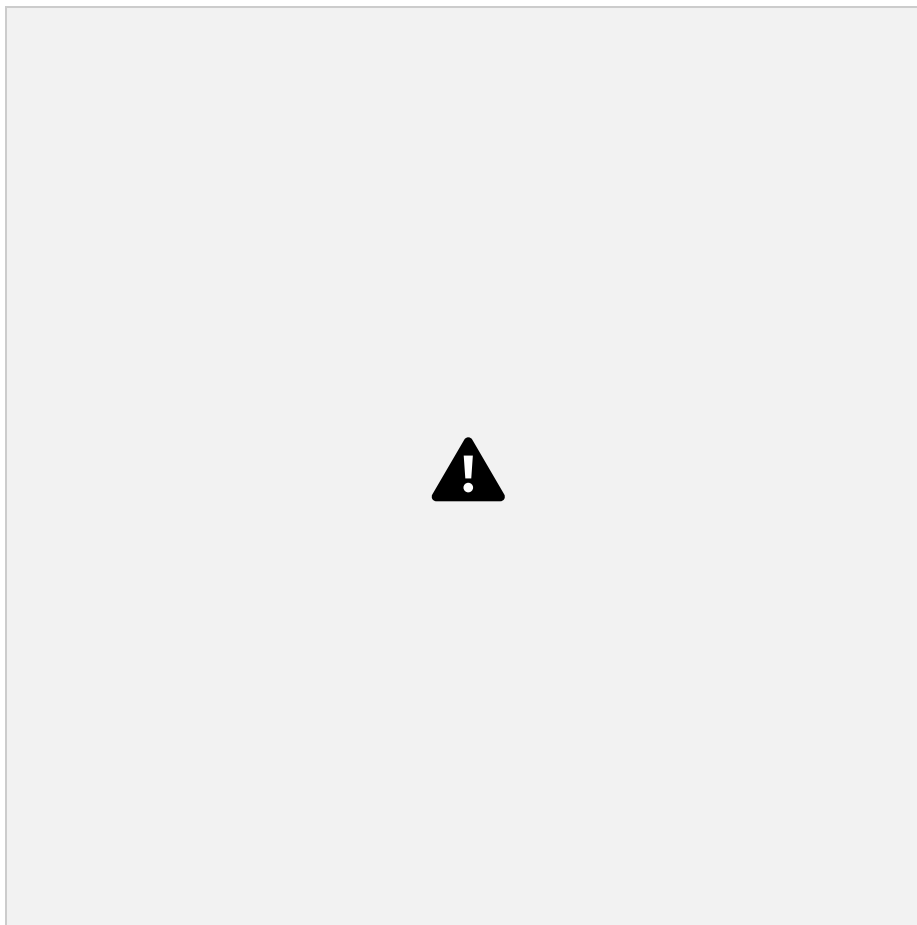
I am totally shocked that absolutely no one guessed today's variant. I thought it was super common and well known, but apparently not. If you aren't familiar with the rules, read very carefully.

Today's GAS is a Gangnam Style Sudoku! Oppan Gangnam Style applies. Additionally, when Mark reads this he will do his best Gangnam Style dance.

...hey, it's worth a try.

Fine. Take all your bonus hats 🧢. If I tried to list everyone (45 of you, if I counted correctly) who got today's variant, I may run out of characters!

Today's GAS is a German Whispers Sudoku! Normal sudoku rules apply. Digits in cells directly connected by a green line must differ by at least 5.



Play on f-puzzles: <https://f-puzzles.com/?id=2j5odexj>

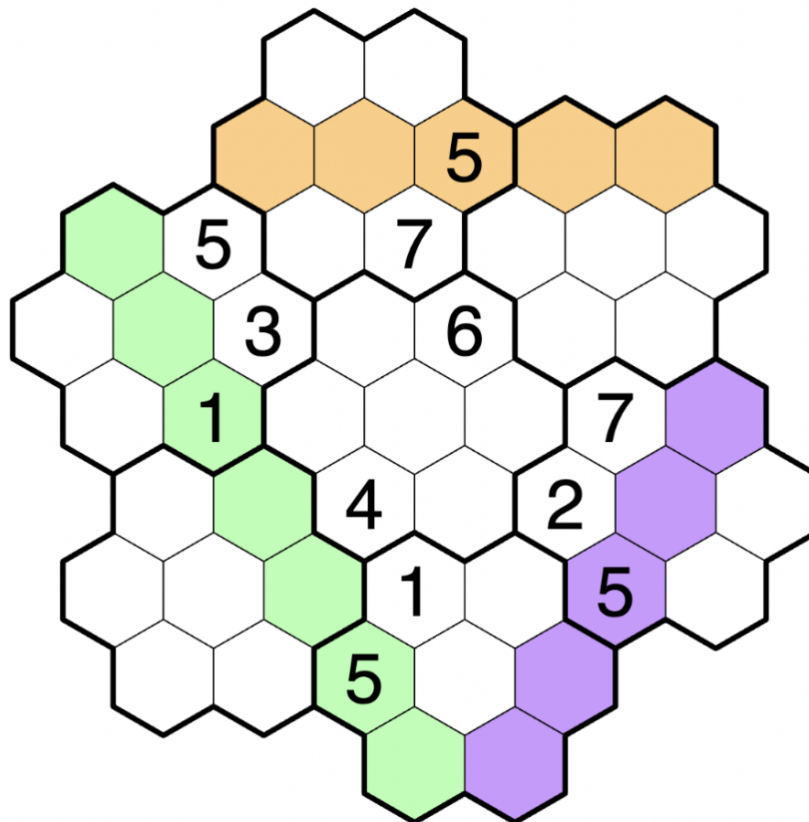
Play on CTC App: <https://tinyurl.com/2smu9bua>

August 8, 2022: Hexadoku

Clover

A creative guess can be just as nice as a correct one, can't it? Alas, today's GAS is not a multi-regional Norwegian air lines sudoku, a 16x16, or even a Hard to Guess Sudoku. As much as I'd like to give you all cowboy hats, after yesterday's bonus hat bonanza, we only have a few left until the next shipment comes in - just enough for correct guessers @samm82 , @Tycedi [147🐲253🤩57🎩11👨🍻] , @sararielle-x8A🐲E2🤩5B🎩26👨🍻13👨🍻2C🦀6🐦 , @Engy , @Steven , @Vornicus , @Fawful , @quanticlenny , @Leseesen 🐷 , and @Conch ! Take a bow (make sure your new hat doesn't fall off when you do so!)

Today's GAS is a hexagonal sudoku. Normal sudoku rules DO NOT apply. Instead, fill the grid with the digits 1 through 7, so that each digit appears exactly once in each of the seven bold-outlined regions. Digits that see each other (horizontally or along either diagonal) may not repeat. To help, example 'rows' and 'columns' have been highlighted in the grid below (they do not appear in the online solving links.)



Penpa: <https://tinyurl.com/2q6dg4a3>

August 9, 2022: Irregular

Sam Cappleman-Lynes

Well done to the 48 people who correctly predicted an Irregular Sudoku for today's puzzle! 🤩 I find it Incredibly Intriguing how so many people seem to be nailing these guesses each day when there are literally hundreds of variants to choose from - how do they do it? 🤔

In this puzzle, normal Sudoku rules apply - that is, write a number from 1-9 into each empty cell so that every row, column and region contains each number exactly once.

7		4		6		8		1
8		5		7				2
								3
	1							
	2	3	4		5	6	7	
							8	
3								
4				8		1		5
5		7		9		2		6

f-puzzles - <https://f-puzzles.com/?id=2eqr9brs>

CtC - <https://tinyurl.com/56ua4438>

August 10, 2022: Jocular Jaunt

Philip Newman

Congrats to the ~40 of you who guessed today's variant correctly! Give yourself a 🤖! I am clearly going to need to step up security again, we clearly have a GAS leak if all these solvers know what we're going to post. I'm sure good doggo Giancarlo Espawcito will sniff out the culprits in no time.

Today's GAS is a Japanese Sums Sudoku!

Normal sudoku rules apply. Shade some cells in the grid such that the clues outside the grid indicate the sums of the contiguous runs of shaded cells found in that row or column. Multiple runs in the same row or column must be separated by at least one unshaded cell.

45 4 41 3 5 27 6 4 35 2 8 19 7 6 20 8 3 5 45

2 42

4 5 7

6 30 5

8 25 3

1 30 8

3 22 6

5 23 4

7 2

45

5

Play on f-puzzles: <https://f-puzzles.com/?id=2osx9kxt>

Play on CTC App: <https://tinyurl.com/2zz24c3v>

August 11, 2022: Killer

Clover

Averyspecialgoodmorningto @Aiden-3435 @Andres @blackdawn @caballero90 @Chaotic Solving @Daniel K @DiMono @Dircules @DreamLibrarian @Elnath @Engy @ickle_e @FreakyFred @George @hexdecs @Infinity [131 🎩, 241 🍌, 13 🐸] @J0llywalrus @jonhughes @Jordyn @kittyphon @Legitimate Businessperson @Leseesen 🐜 @lilell @Marookyn @MasterMue @maxmakesmagic @mightcould @MikoKisai @minora @Nona 🌸🍒 @Oripy @pp @quanticlenny @Raeker @ricaks @samm82 @sararielle-x8A 🐸E2 🍌5B 🎩26 🧑13 🍌2C 🦀6 🐦 @Shogia(205 🍌98 🦀4 🐦852 🍌/🎩5 🐸) @Smoncko @Stephen (he/they) @steve66 @Steven @StKildaFan @sudactylku @TheLukeskywalker2 [115+73] @ThithildeProuv @TJReds @Trey.Will @Tycedi [147 🐸253 🍌57 🎩11 🧑] @tworivers @UbinamRosarium @Walker @Wall of Waaall @Wheat_Grinder @Womath @Wombat @Yoshi Barosh i@Zenkoina (🎩70 🍌220 🐸168 🧑20) and @ジェリミスト 27x 🎩 265x 🍌 151x 🐸 21x 🧑

youguessedcorrectlyenjoyyourcowboyhats!NotalotofroominthispostforanythingelsewiththeDiscordcharacterlimit,toomanynames.Keepguessingbutdontdosuchagoodjobnexttime

Today's GAS is a killer sudoku! Normal sudoku rules apply. Also, digits in a cage may not repeat, and must sum to the indicated value.

10						16		11
13	6			9			6	
			9					
	7					8		
		7					9	
11								
	6			8				17
			8			6		
	14				10			

f-puzzles: <https://f-puzzles.com/?id=2qbf6s6z>

CtC: <https://tinyurl.com/4v4e3t6f>

August 12, 2022: Lockout Lines

Sam Cappleman-Lynes

Congratulations to @Marookyn, @quanticlenny, @Nacnud, @Shogia(205 🍷 98 🦀 4 🐦 852 🎉 / 🍷 5 🐸), @DreamLibrarian, @mightcould, @J0llywalrus, @SMmarcus100 (83 🍷 178 🎉 42 🐸 14 🧑), @Trey.Will, @Het_Belzia, @MasterMue, @rockratzero, @Jordyn, @Oripy, @sudactylku, @Fishhh, @lilell and @kittyphon who correctly worked out that today's puzzle would be a Lockout Lines Sudoku. Enjoy your cowboy hats! 🤠

Today is a perfect day to post a Lockout Lines puzzle, because @riffclown has reminded us that it is actually the first anniversary of the first Lockout Lines puzzle being posted!

In this puzzle, normal Sudoku rules apply. Additionally, if two diamonds are directly connected by a line, then the numbers in the diamonds must differ by at least 4, and the numbers on the line must NOT be between the numbers in the diamonds.

1		6	9			7		
3		9					2	
			8					
6				5				8
					9			
	4					2		3
					6	4		9

f-puzzles - <https://f-puzzles.com/?id=2h3kjmdg>

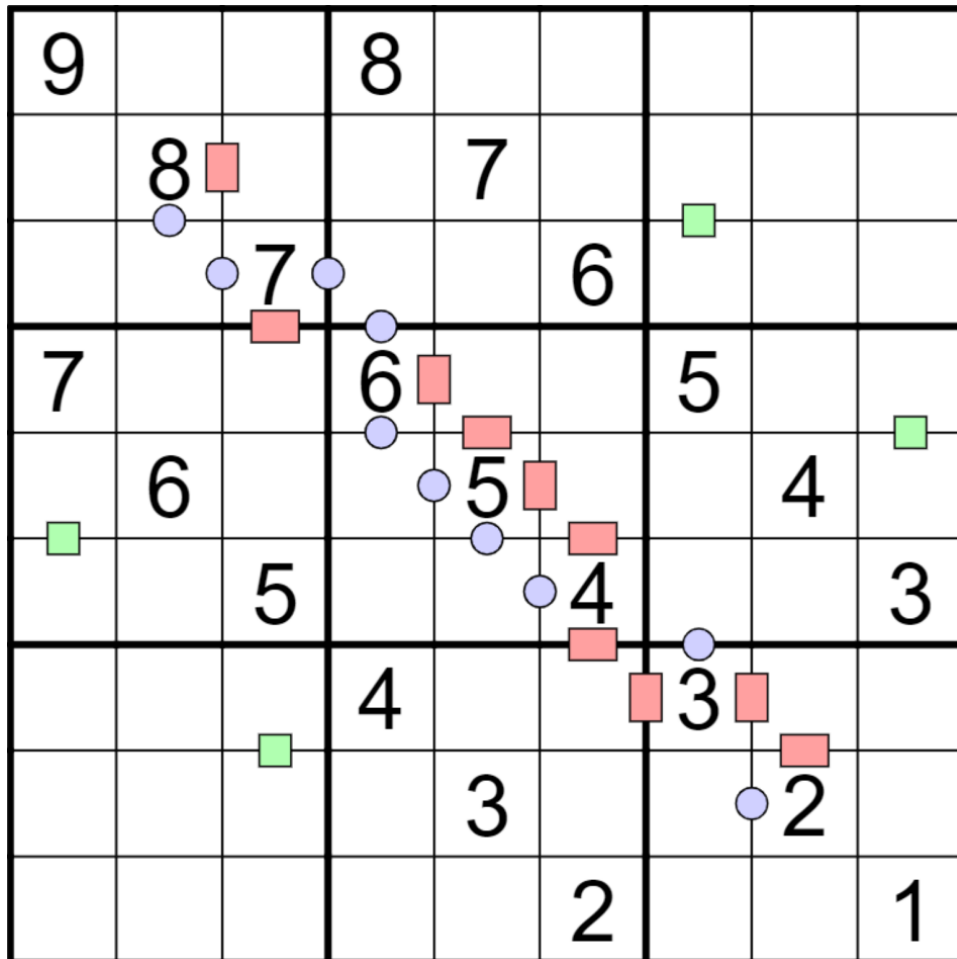
CtC - <https://tinyurl.com/3bymupyd>

August 13, 2022: Meandoku

Philip Newman

I know I have a reputation for being everyone's favorite, gentlest setter. But I have to admit, sometimes I have a mean streak and don't want to give out any hats. Bwahaha. So today's variant is a bit obscure, and no one guessed it correctly! All the 🤪 belong to me!

Today's GAS is a Meandoku! Normal sudoku rules apply. Digits in cells separated by a green square have an arithmetic mean of 5. Digits in cells separated by a blue circle have an arithmetic mean less than 5. Digits in cells separated by a pink (non-square) rectangle have an arithmetic mean greater than 5. (If you don't know what "arithmetic mean" means, it's the average that you think of most of the time when you want an average. The arithmetic mean of 3 and 6 is 4.5, because $(3+6)/2$ is 4.5.)



Play on f-puzzles: <https://f-puzzles.com/?id=2jml3fs2>

Play on CTC App: <https://tinyurl.com/yscpfaut>

August 14, 2022: Nonconsecutive

Clover

Good morning! Today's round of Guess the GAS divided our solvers into two factions of bitter opponents -

On team 'nonconsecutive doesn't have a hyphen', we have correct guessers @Zenkoina (👑70 🧐220 🦎168 🧑20) @kittyphon @Dauger @Walker @Vornicus @lilell @Marookyn @sudactylku @Legitimate Businessperson @BlackBird_6 @Lwoodroff @Nacnud @Nona 🌸🍒 @TJReds @samm82 @Wheat_Grinder @charlottebraun @DreamLibrarian and @Lin Gamerz !!!

On team 'non-consecutive totally has a hyphen (or at least a space)' we have correct guessers @Jezza @mondle @Bialystock-and-Bloom @Rogue0liveR @MSL [269 👑34 🧐24 🧑227 🦎86 🦎8 🦎] @maarten @DiMono @Elnath @Oripy @Tycedi [147 🦎253 🧐57 👑11 🧑] @Infinity [131 👑, 241 🧐, 13 🦎] @Roger Wrightshoe and @MikoKisai !!!

Rooting for both teams (or just really making sure they don't miss their cowboy hats), we have @ジェリミスト 27x 👑 265x 🧐 151x 🦎 21x 🧑 @Jelain and @sararielle-x8A 🦎 E2 🧐 5B 👑 26 🧑 13 🦎 2C 🦎 6 🦎 !!!

And finally, on team 'creative spelling', we have... everybody who guessed correctly, but whose guess didn't pop up when I searched. Award y'all selves some hats 🧑

Today's GAS is a non(-)consecutive sudoku! Normal sudoku rules apply. Also, digits that are orthogonally adjacent to each other may not be consecutive. For instance, 5 and 6 may never share an edge anywhere in the puzzle.

The puzzle image and solving links appear on the following page.

			5	1	9			
7		8				1		5
				3				
	7		1		5		3	
				7				
1		9				3		4
			3	8	4			

f-puzzles: <https://f-puzzles.com/?id=2jflwvny>

CtC: <https://tinyurl.com/yckuxedn>

August 15, 2022: Odd
 Sam Cappleman-Lynes

Well done to @ricaks , @Zenkoina (👑70 🧨220 🐸168 🧑20) , @Stephen (he/they), @Donny The Nuts , @Elnath , @charlottebraun , @lilell , @Engy , @Dauger , @Jelain , @Infinity [131 👑, 241 🧨, 13 🐸] , @SMmarcus100 (83 👑178 🧨42 🐸14 🧑) and @Daniel K who all correctly foresaw that today's puzzle would be an Odd Sudoku! And to the 25 of you who guessed some spelling of Odd/Even Sudoku (or even, in the case of some of you, multiple spellings, trying to cover your bases), because I'm feeling generous, I'm going to leave a pile of hats here and turn my back and see what happens while I'm not looking 🧑

In this puzzle, normal Sudoku rules apply. Additionally, numbers placed in grey circles must be odd.

2		○			7		1	
	○		○		9		3	5
	○		○					
	○		○			9	2	4
		○		1		○		
4	6	5			○		○	
					○		○	
1	3		7		○		○	
	5		9			○		8

f-puzzles - <https://f-puzzles.com/?id=2gdjo66q>

CtC - <https://tinyurl.com/4rrwauvw>

August 17, 2022: Quadruples

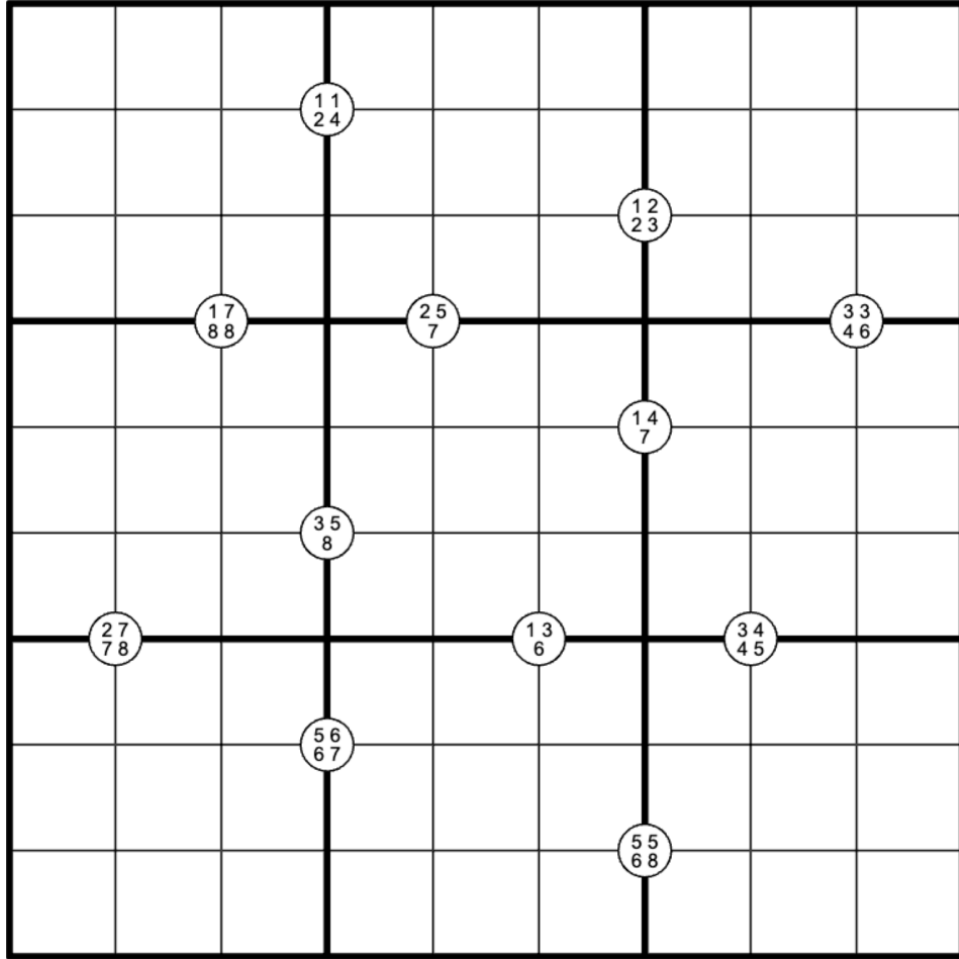
Clover

If you've quound yourselves in a querulous quandry, questioning the quality of quoday's quoffering, then quell your quoncerns: it's a quaint yet quirky quadruples quodoku!

Quongratulations to quorrect quessers @Elnath @Fawful @Smoncko @ジェリミスト
27x👒 265x🎉 151x🦎 21x👨🎨 @kittyphon @Jordyn @Legitimate Businessperson
@lilell @ricaks @milasia (316👒 38🎉 3🦎 10👨🎨 1🔥) @DreamLibrarian
@davedataxattorney @Leseesen 🐘 @Shogia(205👨🎨 98🦎 4🐦 852🎉/👒5🦎) @Tycedi
[147🦎 253🎉 57👒 11👨🎨]@minora @SMmarcus100 (83👒 178🎉 42🦎 14👨🎨) @Jelain
(you two-guessing cheater you) @FreakyFred @mightcould @Lwoodroff @BlackBird_6
@MSL [269👒 34🎉 24👨🎨 227👨🎨 86🦎 8🐘] @jonhughes @charlottebraun @DiMono
@MikoKisai @tworivers @Peppermallow @Nacnud @rockratzero @Marookyn
@MarDN (76 dinos, 62 hats & 4👨🎨)@CoheedK @Infinity [131👒, 241🎉, 13🦎]
@UbinamRosarium @Andres @sararielle-x8A🦎E2🎉5B👒26👨🎨13👨🎨2C🦎6🐦
@Trey.Will @TheLukeskywalker2 [115+73] @sudactylku @Thod @Zenkoina (👒70
🎉220🦎168👨🎨20) @Nona 🌸🍒 @TJReds @Engy@Dauger @J0llywalrus
@Daniel K @Walker and anybody who managed to slide under the radar: one quowboy
hat for each of ya👨🎨

Normal sudoku rules apply. Digits in a white circle must appear somewhere in the four cells surrounding that circle. If a digit appears twice in a white circle, it must appear twice in the four surrounding cells.

The puzzle image and solving links appear on the following page.



f-puzzles: <https://f-puzzles.com/?id=2odnklx9>

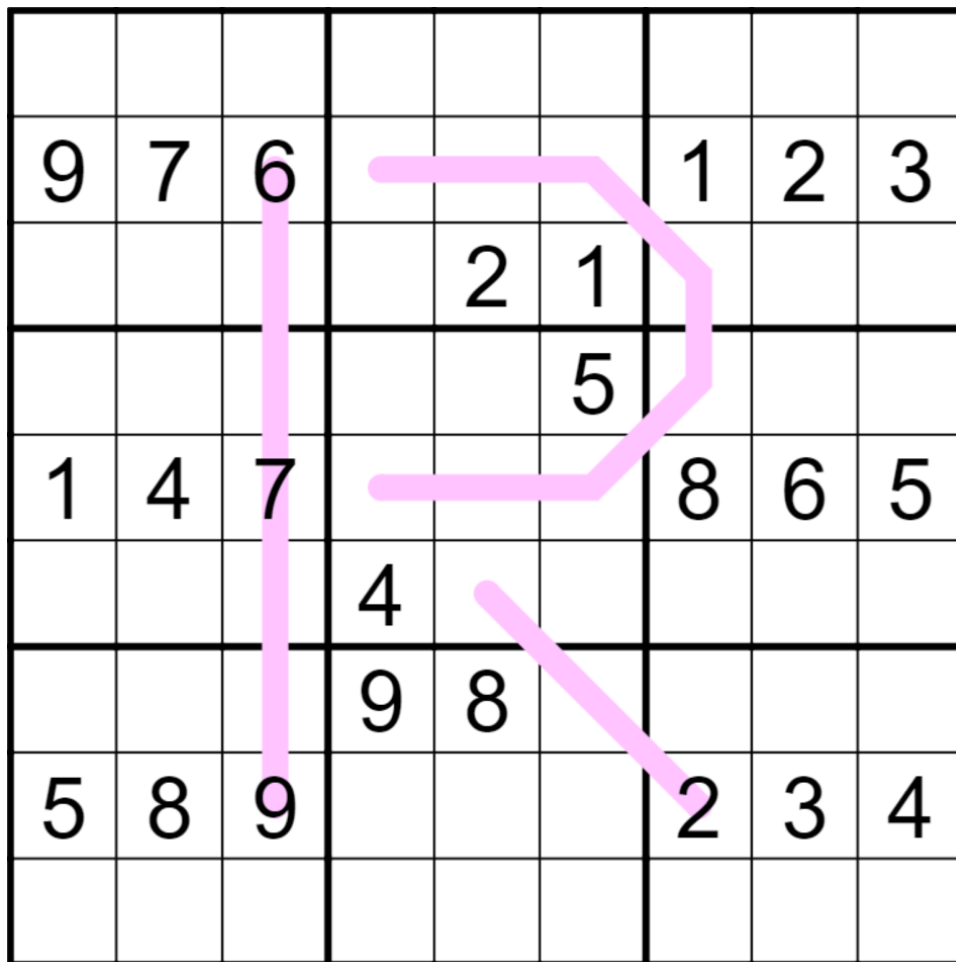
CtC: <https://tinyurl.com/yhj8xjyv>

August 18, 2022: Renban

Sam Cappleman-Lynes

First things first - an incredible 74 of you guessed today's variant correctly! I would name you all individually to give you the hats but I would 1) run out of space in this message and 2) need to rest my fingers after the marathon typing session, leading to further delay in the upload of today's GAS

Today's puzzle is a Renban Sudoku. Normal Sudoku rules apply. In addition, the numbers on each pink line must be a set of consecutive numbers without repeats - but they can appear on the line in any order.



f-puzzles - <https://f-puzzles.com/?id=2percdd6>

CtC - <https://tinyurl.com/2p87674k>

August 19, 2022: Still Sick

Philip Newman

Lots of correct guesses today... if you guessed that today's GAS would be a Sandwich Sudoku, grab yourself a 🧑🍳!

Normal sudoku rules apply. A value outside of the grid is a sandwich clue: it tells you the sum of the digits between the 1 and the 9 in that row or column, not including the 1 and 9 themselves.

35								
	5						7	
0				6				
30			4			6		
5		8		3				
					2			
15			7					
0	8							
								1

Play on f-puzzles: <https://f-puzzles.com/?id=2ndaqt8y>

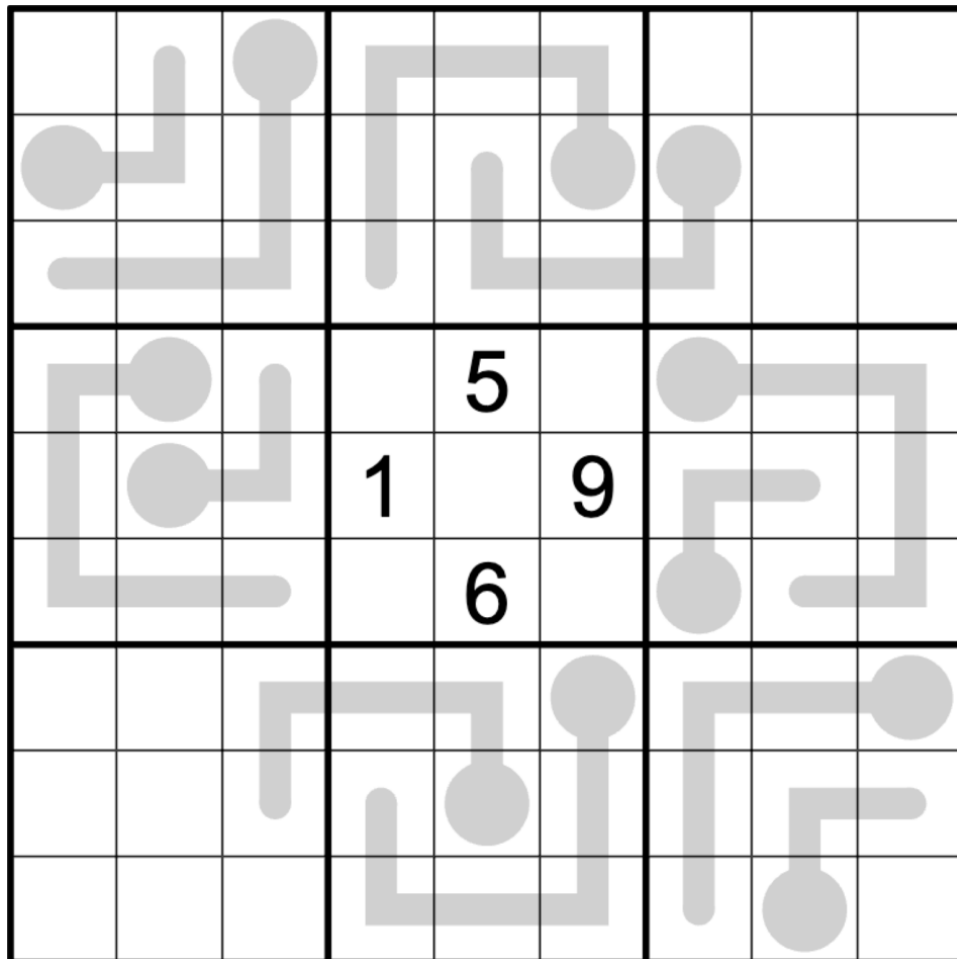
Play on CTC App: <https://tinyurl.com/hbtzexp5>

August 20, 2022: Thermo

Clover

To commemorate both the recent heat wave and Philip's bout with covid, today's GAS is a thermo sudoku 🌡️. (I don't even need to tell you that there were a whole pile of correct 🤖 guesses today. Guess tomorrow's variant and win a bonus hat!)

Normal sudoku rules apply. Also, digits along a thermometer must increase (not necessarily consecutively), starting from the round bulb.



f-puzzles: <https://f-puzzles.com/?id=2nsfgu4q>

CtC: <https://tinyurl.com/2p87mdy7>

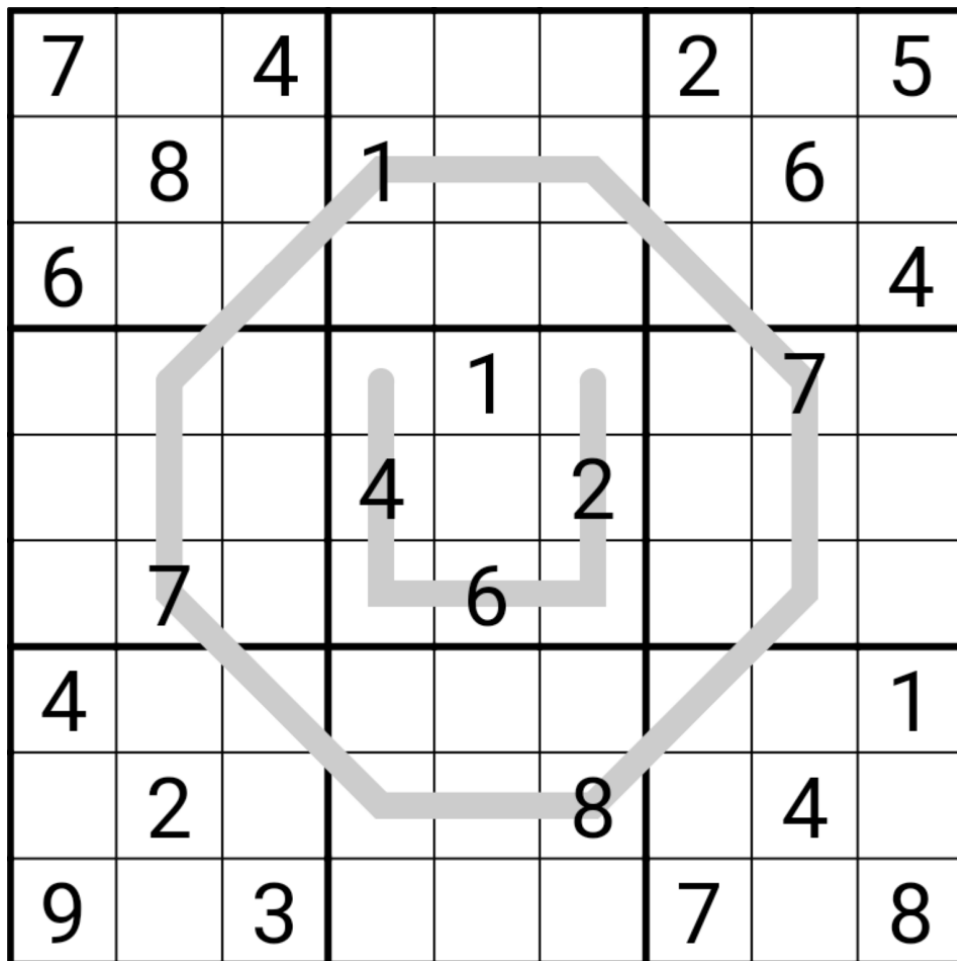
August 21, 2022: Up and Down

Sam Cappleman-Lynes

You all must have run out of psychic juice for the month because only 5 of you correctly guessed today's variant. @quanticlenny @davedataxattorney @DreamLibrarian @Vornicus @Leo7 - enjoy this bonus hat! 🧢

Today's GAS is an Up and Down Sudoku*. Normal Sudoku rules apply. Additionally, on each grey line, the sequence of numbers must alternately increase and decrease, all the way along the line.

* Note for Sudoku nerds: this puzzle, unlike its original namesake, does not introduce a constraint on the difference between numbers along the line.



f-puzzles - <https://f-puzzles.com/?id=2zsdp28g>

CtC - <https://tinyurl.com/4f4m6vrk>

August 22, 2022: VI VERI VSVDOKVM VIVVS VICI

Philip Newman

Very well done to the venturesome solvers who valiantly volunteered viable and victorious guesses. Verily, you are vindicated by today's GAS, a V Sudoku!

Normal sudoku rules apply. Digits in cells separated by a V must sum to 5.

v	6		1		v		
v	5		v		v	6	
				v		v	7
		v					
2	v			7			3
					v		
5	v		v				
	8			v		7	v
		v		4		6	v

Play on f-puzzles: <https://f-puzzles.com/?id=2fb6n7vh>

Play on CTC App: <https://tinyurl.com/msbupcuy>

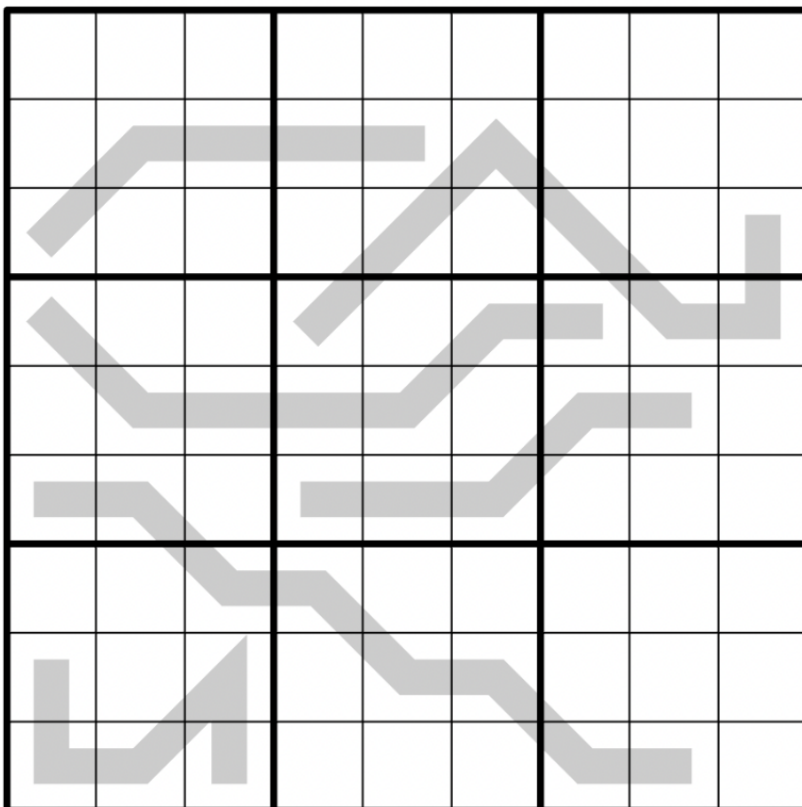
August 23, 2022: Word Search

Clover

I apologize for the obscurity of my hints yesterday! Today's GAS went tragically unguessed. 😞 'It's not a windoku' could have meant several things in context, only one of which turned out to be correct: despite Philip's attempts to undermine your confidence in my hinting, it's actually not a windoku. :mindblowingpuzzle:

Today's GAS is a word search sudoku! Normal sudoku rules apply, except that the puzzle uses the letters BESOLVING rather than the digits 1 through 9. Also, the words from the word bank must each appear along one of the heavy gray lines. A word appears in order along its line, but it may start on either end of the line.

Penpa usage tip: you need to have caps lock on in order to enter capital letters without interference from the Penpa keyboard shortcuts. Feel free to solve in lowercase if you're not able to use caps lock!



WORD BANK:

NONSENSE
BOBBINS
SOLVING
BEGIN
GIVEN
VIBES

LETTER BANK:

BESOLVING

Penpa: <https://tinyurl.com/2zgd2btI>

August 24, 2022: X-Sums

Sam Cappleman-Lynes

There were no fewer than 40 correct guesses for today's variant! @MikoKisai, @Vornicus, @MSL [269 🎩 34 🧐 24 🧐 227 🧐 86 🦀 8 🧐], @jonhughes, @mightcould, @Jelain, @George, @Zenkoina (🎩 70 🧐 220 🦀 168 🧐 20), @quanticlenny, @ジェリミスト 27x 🎩 265x 🧐 151x 🦀 21x 🧐, @Serrif | 55 🎩 | 230 🧐 | 92 🦀, @Daniel K, @Tycedi [147 🦀 253 🧐 57 🎩 11 🧐], @ricaks, @Nona 🌸 🍒, @Jordyn, @DreamLibrarian, @Leseesen 🦀, @hella_gela (🦀 11, 🧐 7, 🧐 3), @samm82, @sararielle-x8A 🦀 E2 🧐 5B 🎩 26 🧐 13 🧐 2C 🦀 6 🦀, @Spelldaddy, @Dauger, @FreakyFred, @MouseOfValor, @Aiden-3435, @Truth And Her, @Walker, @pp, @TJReds, @Pathius, @Infinity [131 🎩, 241 🧐, 13 🦀], @Silverlode, @Chaotic Solving, @Shogia(205 🧐 98 🦀 4 🦀 852 🧐 / 🎩 5 🦀), @minora, @mattender, @sudactylku, @Legitimate Businessperson, @kittyphon - enjoy your bonus cowboy hat! 🧐

Today's GAS is an X-Sums Sudoku in which normal Sudoku rules apply. Additionally, a clue outside the grid indicates the sum of the nearest X numbers in the corresponding row or column, where X is the first of those numbers. For example, a clue of 12 could be satisfied by, for example, 4512 (where X is 4), or 327 (where X is 3).

									(9)	(10)	(1)	(40)
(42)			1				2		(9)			
				3		4			(8)			
					5							
(8)				6		7						
(7)			8				9		(26)			
									(1)	(16)	(11)	(13)

f-puzzles - <https://f-puzzles.com/?id=2oascawg>

CtC - <https://tinyurl.com/m8swrasp>

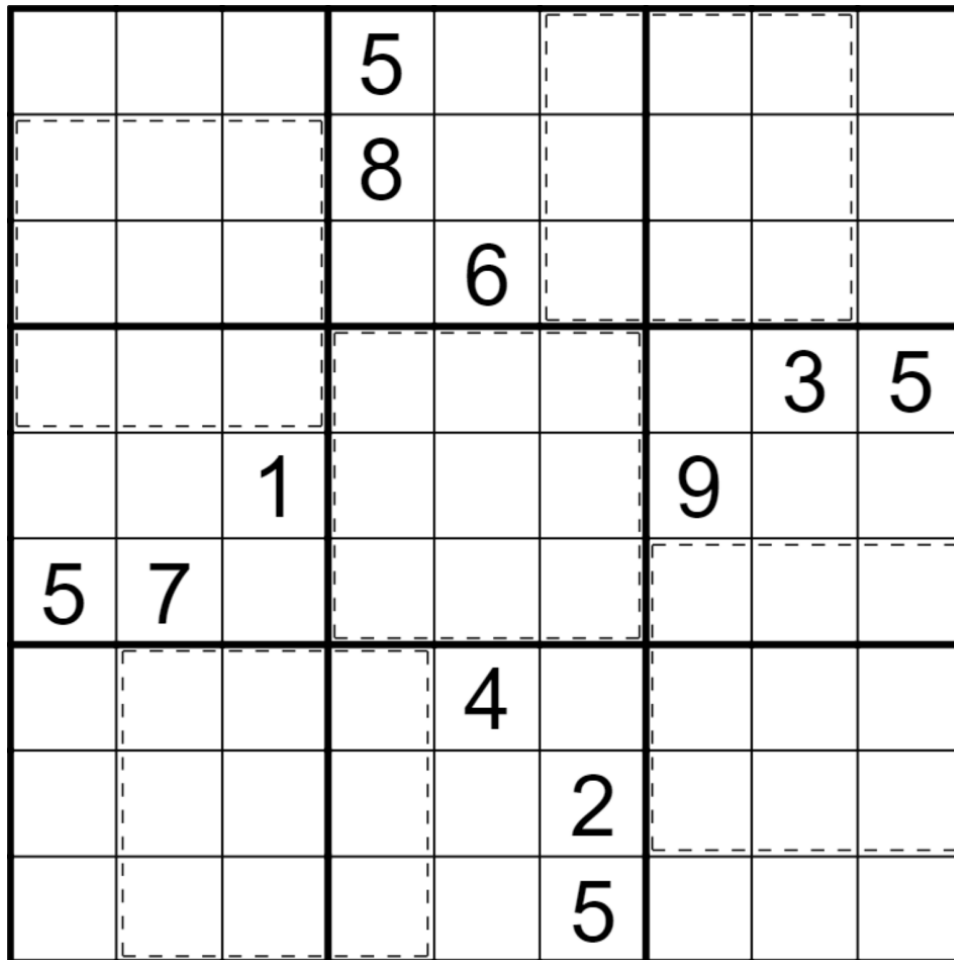
August 25, 2022: Yippee Ki Yay, Y'all

Philip Newman

:yoooooooooooo: Y'all earned a few 🤖 today - congrats to @MikoKisai, @Vornicus, @Shogia(205🐼98🦀4🐦852🎉/🎩5🐸), @davedataattorney, @sararielle-x8A🐸E2🎉5B🎩26🤖13🐼2C🦀6🐦, and @BlackBird_6 for correctly guessing that today's GAS would be a Young Tableaux Sudoku. Though not that I would include the x on the end. There's more than one young tableau in the puzzle!

Normal sudoku rules apply. Within cages digits cannot repeat, and must increase from left to right (in rows) and top to bottom (in columns). For example:

valid	also valid	not valid
12	13	12
34	24	4



Play on f-puzzles: <https://f-puzzles.com/?id=2po5fa8n>

Play on CTC App: <https://tinyurl.com/2p94fndu>

August 26, 2022: Zones

Clover

Congratulations to zesty guessers @Vornicus @Leo7 @kittyphon @Chaotic Solving @Infinity [131 🎩, 241 🎉, 13 🐸] @Leseesen 🐘 (where did your W go?) @Truth And Her @Pathius @Womath @lilell @meadowphoenix @samm82 @mattender @sudactylku @BlackBird_6 @Legitimate Businessperson @sararielle-x8A 🐸E2 🎉5B 🎩26 🧑13 🐘2C 🦀6 🐦 @scarlettplusnoir @hella_gela (🐸11, 🎉7, 🧑3) @Lwoodroff @Zenkoina (🎩70 🎉220 🐸168 🧑20) @Jordyn @jonshare @ジェリミスト 27x 🎩 265x 🎉 151x 🐸 21x 🧑 @Spelldaddy @charlottebraun @yearski @Jelain @Shogia(205 🐘98 🦀4 🐦852 🎉/🎩5 🐸) @Nona 🌸🍒 @DreamLibrarian @MrScaryMuffin 18 🧑179 🎩198 🎉78 🐸 @bean [12 🎩 | 15 🎉 | 0 🐸 | 2 🧑] @SMmarcus100 (83 🎩178 🎉42 🐸14 🧑) @DiMono @Tycedi [147 🐸253 🎉57 🎩11 🧑] @George @davedataxattorney and @MikoKisai !

Well, it appears we've reached the end of the alphabet. Sam, Philip, and I are packing our bags and heading off on a brief vacation (for Philip and I) / holiday (for Sam). See you next month.... wait. You still want to guess? And you still want puzzles?



In that case, who's going to set tomorrow's GAS?

Wait.... why not guess that? If you figure out who set tomorrow's puzzle, there's a cowboy hat waiting for you. (Please try to avoid pinging the person you're guessing!)

Anyways, today's GAS is a zone sudoku. Normal sudoku rules apply. Also, the small digits indicated in the top left corner of each cage must appear somewhere within that cage. Digits may repeat in a cage as long as they follow sudoku rules.

The puzzle image and solving links appear on the following page.

			456					6
				1256		348		
			6					
		1458		1		8		
			4		2	2367		
179		9	3478	3				
					5	125		
3								

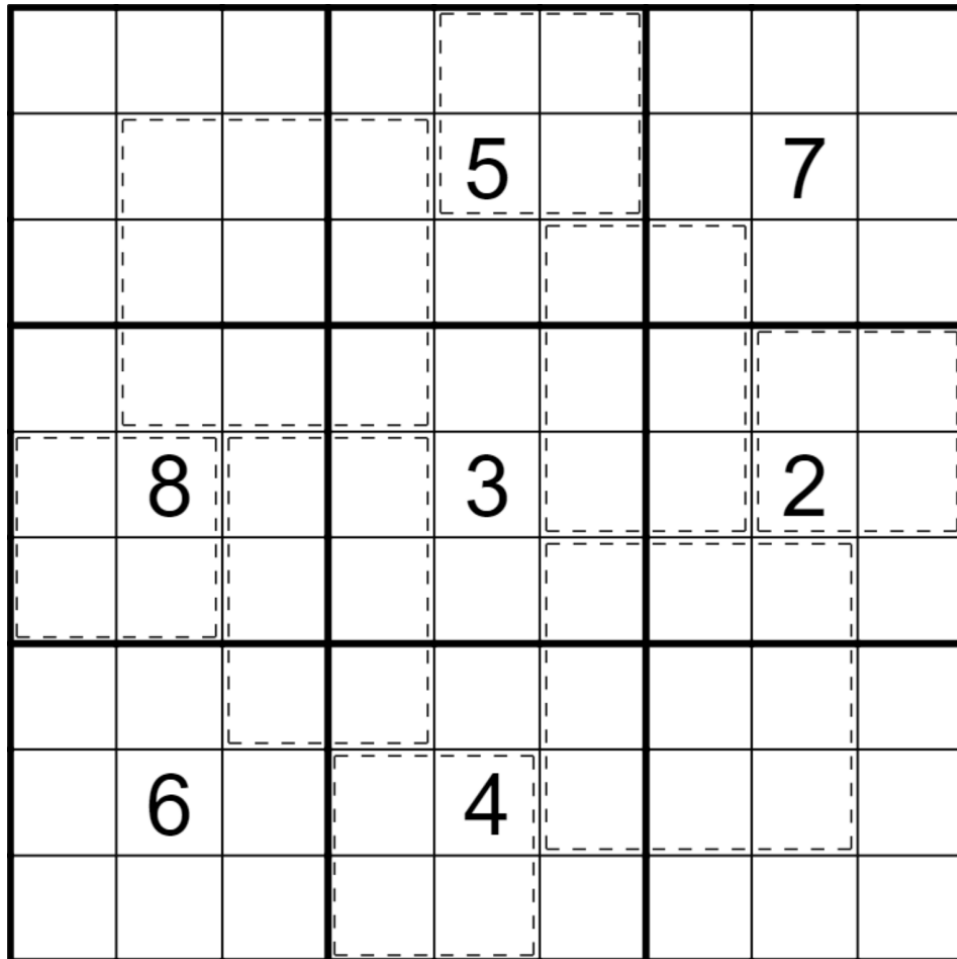
f-puzzles: <https://f-puzzles.com/?id=2h8343gr>

CtC: <https://tinyurl.com/mrxsca8>

Bonus Y: Young Tableaux

Philip Newman

Normal sudoku rules apply. Within cages digits cannot repeat, and must increase from left to right (in rows) and top to bottom (in columns).



<https://f-puzzles.com/?id=2jyb5k2k>

<https://tinyurl.com/3a9jwyea>

Bonus P: Palindrome

Philip Newman

Normal sudoku rules apply. Digits along each gray line form a palindrome (a sequence that reads the same backwards as forwards).

	6						4	
2								1
			1	2	3			
			4	5	6			
			7	8	9			
6								8
	1						6	

<https://f-puzzles.com/?id=2mltysct>

<https://tinyurl.com/2p9z864e>

Bonus X: X-Sums

Sam Cappleman-Lynes

Normal sudoku rules apply. A clue outside of a row or column gives the sum of the first N digits (from the direction of the clue) in that row or column, where N is the first digit (nearest the clue) in that row or column.

The puzzle is an 8x8 grid with a 3x3 sub-grid in the center. The grid contains the following numbers and clues:

			6				
					1		
		2					7
				5			
8						4	
			3				
					9		

Clues (sums) are provided in circles around the grid:

- Top: (2,3) 26, (5,4) 9, (5,5) 9
- Left: (3,1) 6, (4,1) 6, (6,1) 16
- Right: (3,8) 32, (5,8) 8, (6,8) 8
- Bottom: (8,3) 10, (8,4) 10, (8,6) 42

<https://f-puzzles.com/?id=2pnx8ms4>

<https://tinyurl.com/mvn9jaxa>

Bonus M: Multiples

Clover

Normal sudoku rules apply. If a white circle appears between two cells, read the digits in those cells as a 2-digit number from top to bottom or left to right. The 2-digit number is divisible by the value in the circle.

	3		9		9	
	3		2	9	6	
6						4
	2	2			2	2
			5	3		
	4		1	3	5	
2						1
	2	2			2	2
	1		3	5	4	
7				7		6

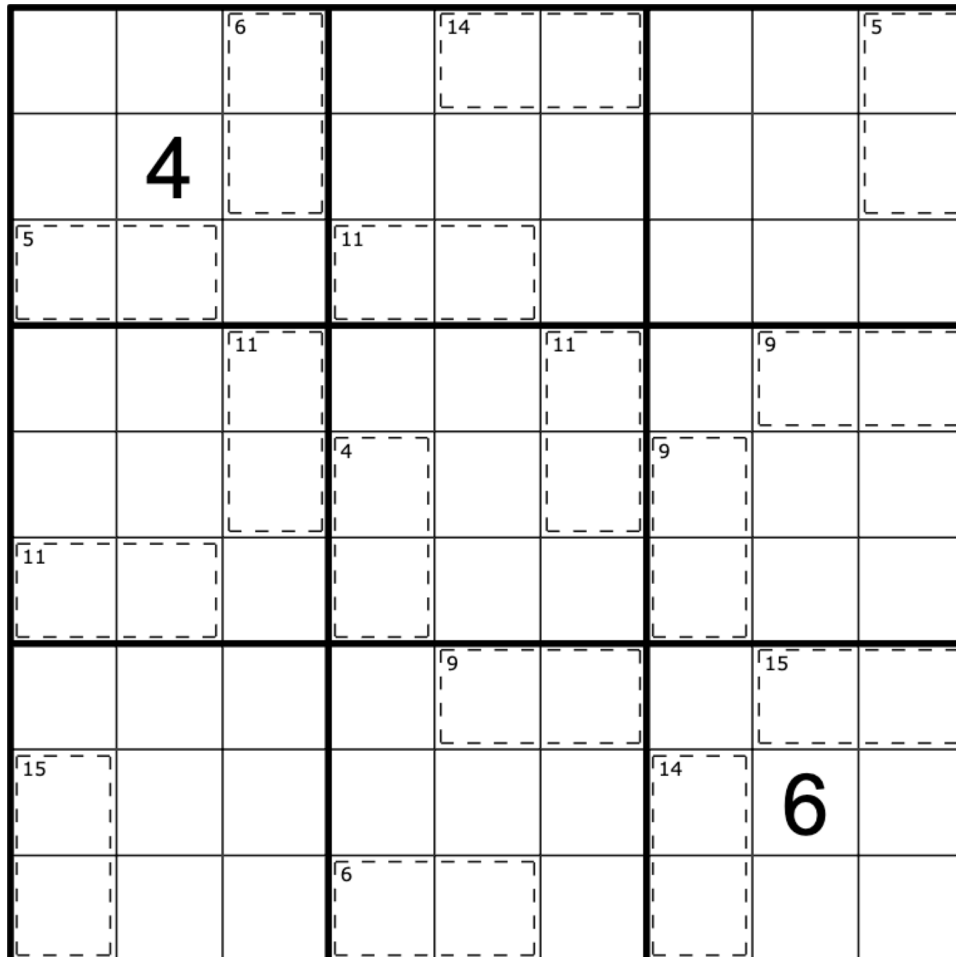
<https://f-puzzles.com/?id=2pjwe9nk>

<https://tinyurl.com/mrxmj4su>

Bonus U: Unique Killer

Clover

Normal sudoku rules apply. Digits in a cage may not repeat and must sum to the indicated value. Also, no two cages can contain the exact same combination of digits.



<https://f-puzzles.com/?id=2duax2pu>

<https://tinyurl.com/7689hrmc>

Time Benchmarks

	One party hat	Two party hats	Today's dinosaur:
August 1, 2022	13:00	7:30	august aepisaurus
August 2, 2022	17:00	9:00	bodacious borogovia
August 3, 2022	13:00	7:00	consecutive coahuilaceratops
August 4, 2022	10:00	5:30	deliberate dinodocus
August 5, 2022	17:00	9:00	extra-large efraasia
August 6, 2022	11:00	6:00	fortified futalognkosaurus
August 7, 2022	12:00	6:30	gangnanimous gongxianosaurus
August 8, 2022	13:00	7:00	hexed haya
August 9, 2022	12:00	6:30	irregular ilokelesia
August 10, 2022	17:00	9:00	jovial jainosaurus
August 11, 2022	11:30	6:00	keen kol
August 12, 2022	12:00	6:30	locked-out laiyangosaurus
August 13, 2022	12:00	6:30	meaningful morinosaurus
August 14, 2022	11:00	6:00	nice nothronychus
August 15, 2022	12:00	6:30	odd oviraptor
August 16, 2022	13:31	6:36	pterrifying perijasaurus
August 17, 2022	11:00	6:00	quality quaesitosaurus
August 18, 2022	13:00	7:00	rhotic regaliceratops
August 19, 2022	19:19	9:19	saturnalia sigillarius
August 20, 2022	16:00	9:00	tasteful tastavinsaurus
August 21, 2022	12:00	6:30	undulating ugrosaurus
August 22, 2022	X:X	V:VV	venusauric venenosaurus
August 23, 2022	16:00	9:00	wordy willinakaqe
August 24, 2022	12:00	6:30	xenial xuanhuaceratops
August 25, 2022	12:00	6:00	youthful yaleosaurus
August 26, 2022	12:00	6:30	zoetic zalmoxes